

PAGE	MANUFACTURE SITE	IMPLEMENTATION DATE
1,2,4	MALMO, DUNDEE, BRAZIL	N/A
3	MALMO, DUNDEE, BRAZIL	N/A
5,6,7	BRAZIL	FROM 2024 AUGUST

NOTE : TOLERANCES FOR CONNECTION PIPES +-10mm

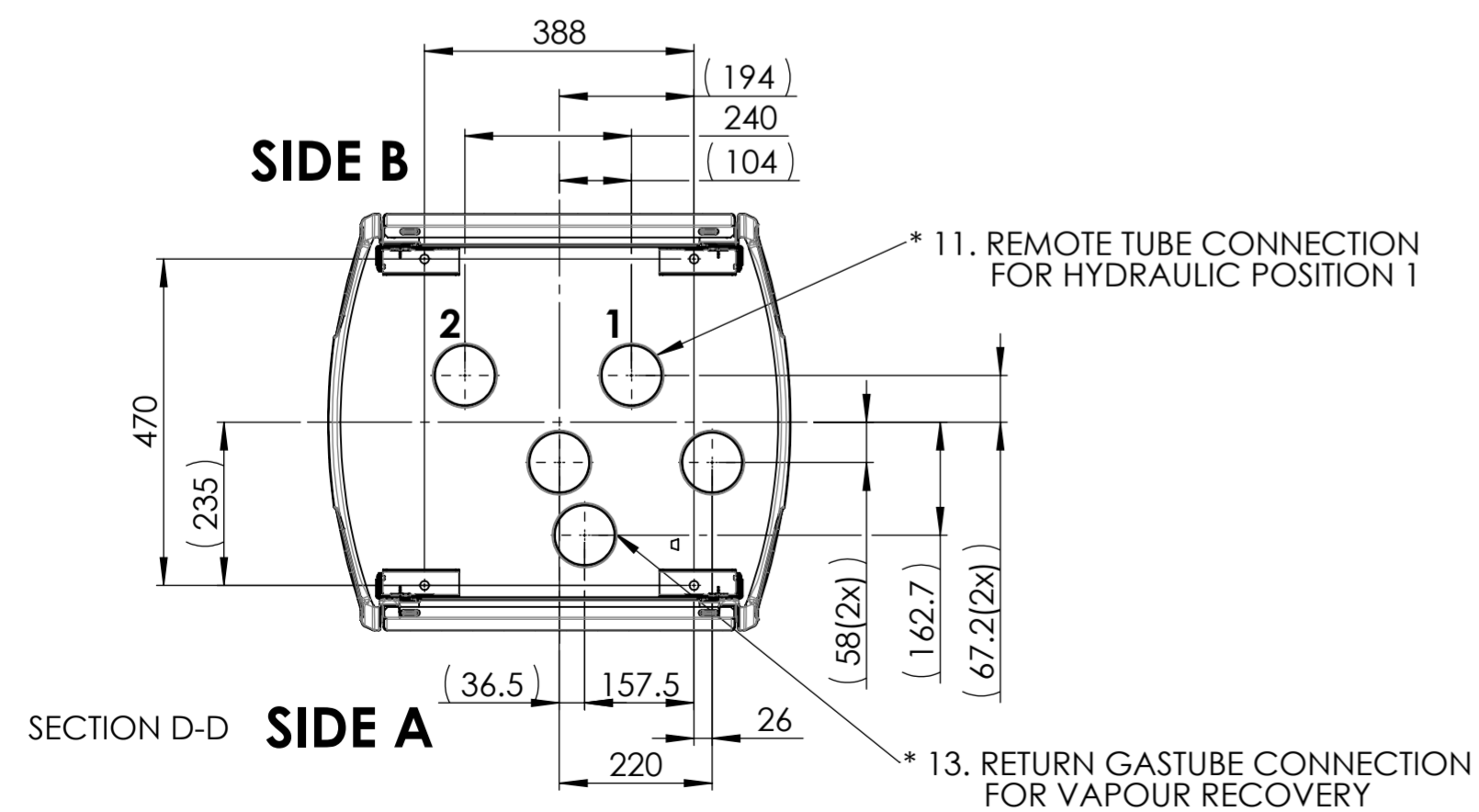
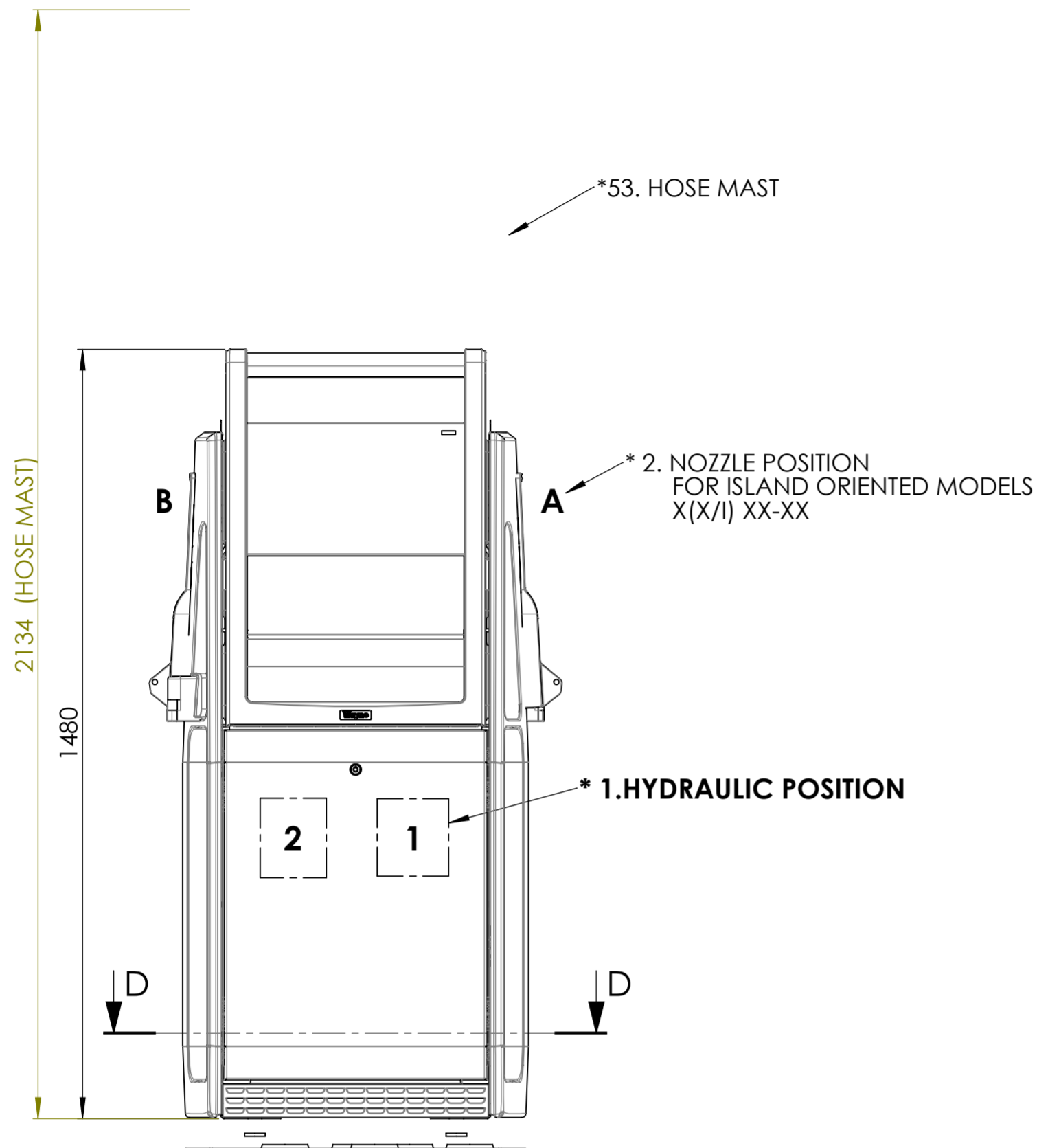
UNLESS NOTED OTHERWISE, DIMENSIONS ARE IN mm

MATERIAL	DEBURR AND BREAK SHARP EDGES	SCALE 1:10	DO NOT SCALE DRAWING		Related Drawing
THICKNESS	TITLE				DRAWING NO.
SURFACE TREATMENT	INSTALLATION INSTRUCTION				WM053738
SURFACE FINISH	HELIX 1000, IEC, REMOTE				SHEET 1 OF 7
GENERAL TOLERANCE					
REPLACED BY					

- * 16. THE HOLLOW SPACE UNDER THE PUMP IS TO BE FILLED WITH FINE COARSE SAND 0-8 OR LECA-PELLETS 2-4.**
- * 21. THIS INSTRUCTION IS VALID FOR THE PUMP MODEL HELIX 1000 REMOTE**

"DOVER FUELING SOLUTIONS CONFIDENTIAL INFORMATION, SUBJECT TO NDA. THE DRAWINGS, TECHNICAL DATA, AND ALL OTHER INFORMATION SET FORTH IN THIS DOCUMENT COMPRISE TRADE SECRETS AND/OR OTHER CONFIDENTIAL INFORMATION THAT IS THE PROPERTY OF DOVER FUELING SOLUTIONS UK LTD. AND/OR ITS AFFILIATE(S) AND MAY BE SUBJECT TO COPYRIGHT OR OTHER PROTECTION. ACCESS TO AND/OR USE OF SUCH CONFIDENTIAL INFORMATION IS STRICTLY CONTROLLED AND LIMITED TO THE PURPOSE(S) FOR WHICH IT IS OR WAS PROVIDED, AND NO RECIPIENT IS PERMITTED TO USE, COPY, OR OTHERWISE DISCLOSE OR TRANSMIT SUCH INFORMATION, EXCEPT AS EXPRESSLY SET FORTH IN THE APPLICABLE NON-DISCLOSURE AGREEMENT(S), OR AS OTHERWISE AUTHORIZED IN WRITING BY, OR ON BEHALF OF, DOVER FUELING SOLUTIONS UK LTD. AND/OR ITS AFFILIATE(S). ALL RIGHTS RESERVED."

APPROVED BY	04.3	WU027290-0001
DRAWN BY	REV	DATE
Leonardo Braga		ECN NO.



* 21. THIS INSTRUCTION IS VALID FOR HELIX 1000 REMOTE MODELS

Model	Flow Rates L/min	Nozzle Position	Hydraulic
S(N/UI)11-110R			
S(N/UI)11-11R*			
S(N/UI)11-110R 90			
S(N/UI)11-210R 120			
S(N/UI)11-21R* 120			
S(N/UI)11-21R* 120/40			
S(N/UI)22-211R			
S(N/UI)11-110R DEF			
S(N/UI)11-11R*			

NOTE : TOLERANCES FOR CONNECTION PIPES +-10mm

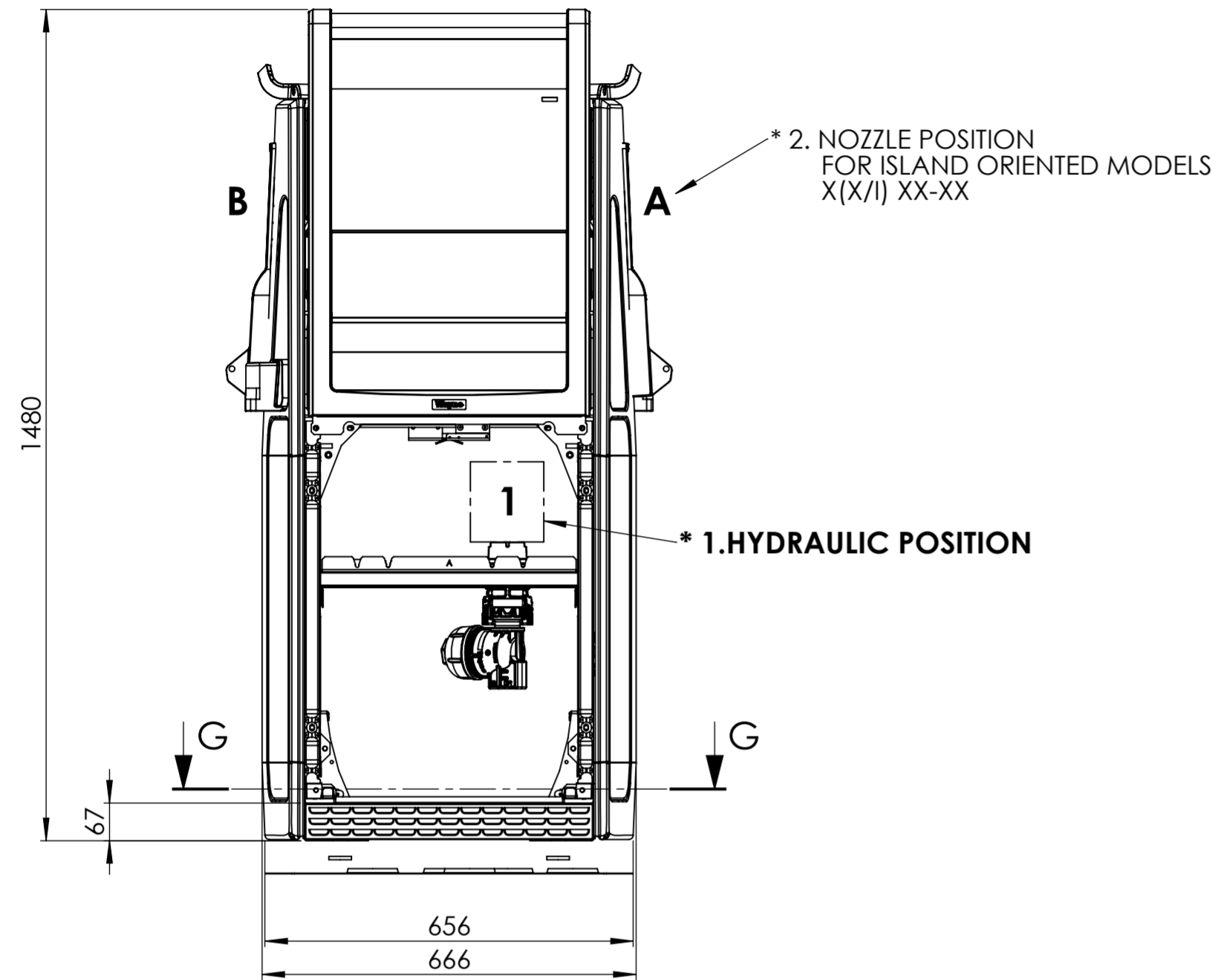
UNLESS NOTED OTHERWISE, DIMENSIONS ARE IN mm

MATERIAL	DEBURR AND BREAK SHARP EDGES	SCALE 1:10	DO NOT SCALE DRAWING		Related Drawing
THICKNESS	TITLE INSTALLATION INSTRUCTION			DRAWING NO. WM053738	
SURFACE TREATMENT	HELIX 1000, IEC, REMOTE			SHEET 2 OF 7	
SURFACE FINISH				A2	
GENERAL TOLERANCE				SW FORM REF: WB000246 Revision 01.6	
REPLACED BY					

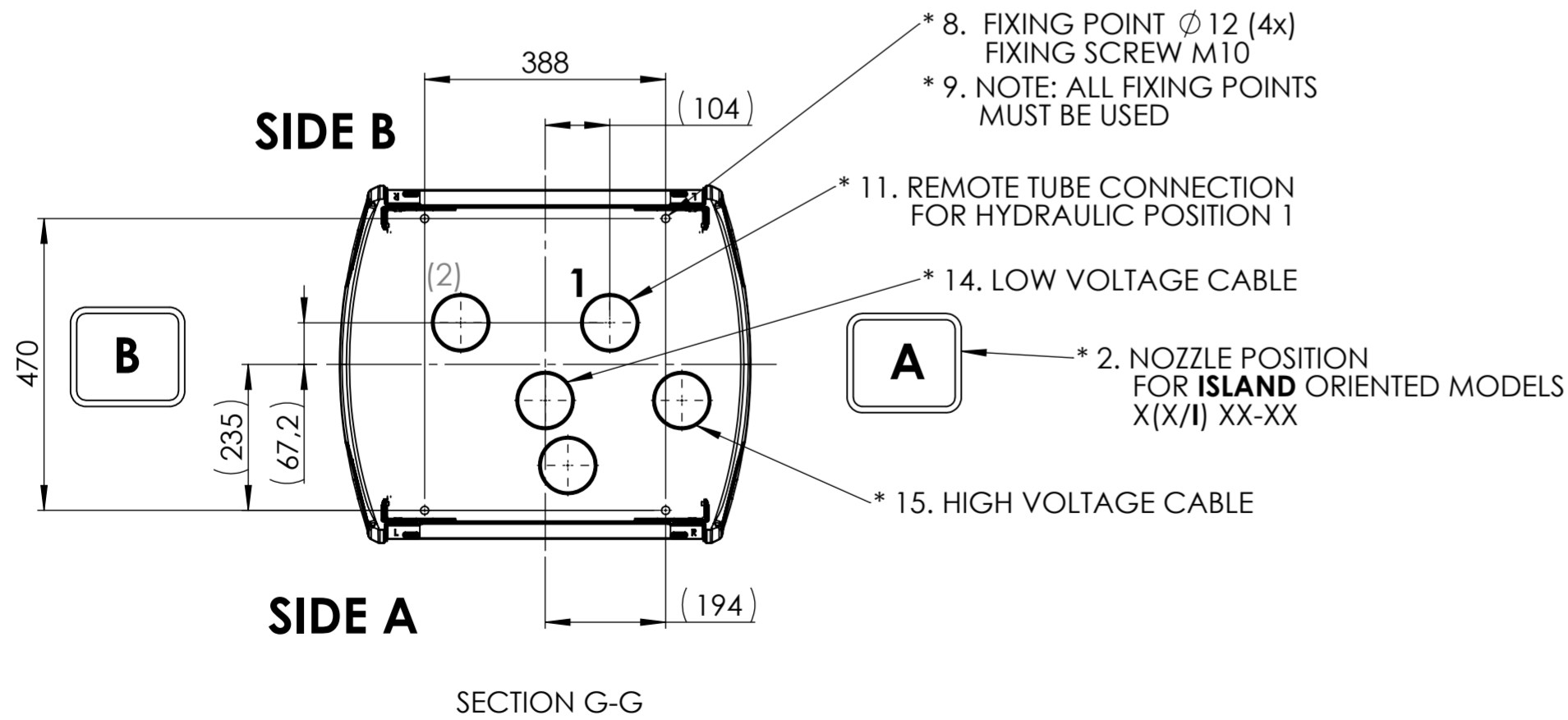
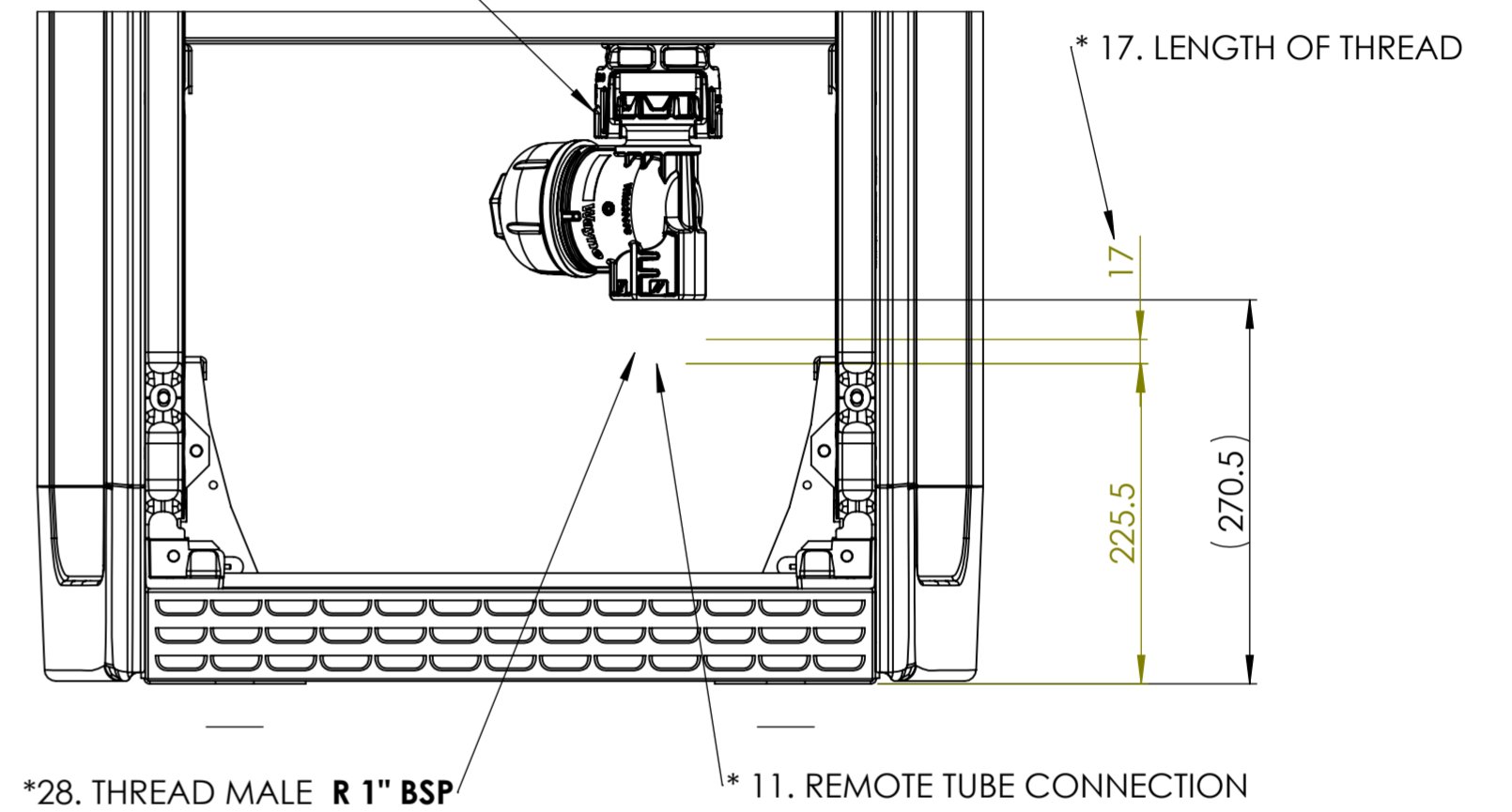
"DOVER FUELING SOLUTIONS CONFIDENTIAL INFORMATION, SUBJECT TO NDA. THE DRAWINGS, TECHNICAL DATA, AND ALL OTHER INFORMATION SET FORTH IN THIS DOCUMENT COMPRISE TRADE SECRETS AND/OR OTHER CONFIDENTIAL INFORMATION THAT IS THE PROPERTY OF DOVER FUELING SOLUTIONS UK LTD. AND/OR ITS AFFILIATE(S) AND MAY BE SUBJECT TO COPYRIGHT OR OTHER PROTECTION. ACCESS TO AND/OR USE OF SUCH CONFIDENTIAL INFORMATION IS STRICTLY CONTROLLED AND LIMITED TO THE PURPOSE(S) FOR WHICH IT IS OR WAS PROVIDED, AND NO RECIPIENT IS PERMITTED TO USE, COPY, OR OTHERWISE DISCLOSE OR TRANSMIT SUCH INFORMATION, EXCEPT AS EXPRESSLY SET FORTH IN THE APPLICABLE NON-DISCLOSURE AGREEMENT(S), OR AS OTHERWISE AUTHORIZED IN WRITING BY, OR ON BEHALF OF, DOVER FUELING SOLUTIONS UK LTD. AND/OR ITS AFFILIATE(S). ALL RIGHTS RESERVED."

APPROVED BY	04.3		WU027290-0001
DRAWN BY	REV	DATE	ECN NO.
Leonardo Braga			

DEF, AdBlue®, SCR, UREA



*54. THE COUPLING SHOULD BE TIGHTENED WITH A TORQUE OF 120 Nm AND THE SPANNER SIZE FOR THIS IS 90 mm



* 21. THIS INSTRUCTION IS VALID FOR THE PUMP MODEL HELIX 1000 REMOTE, DEF (ARLA 32 / AdBlue®)

NOTE : TOLERANCES FOR CONNECTION PIPES +-10mm

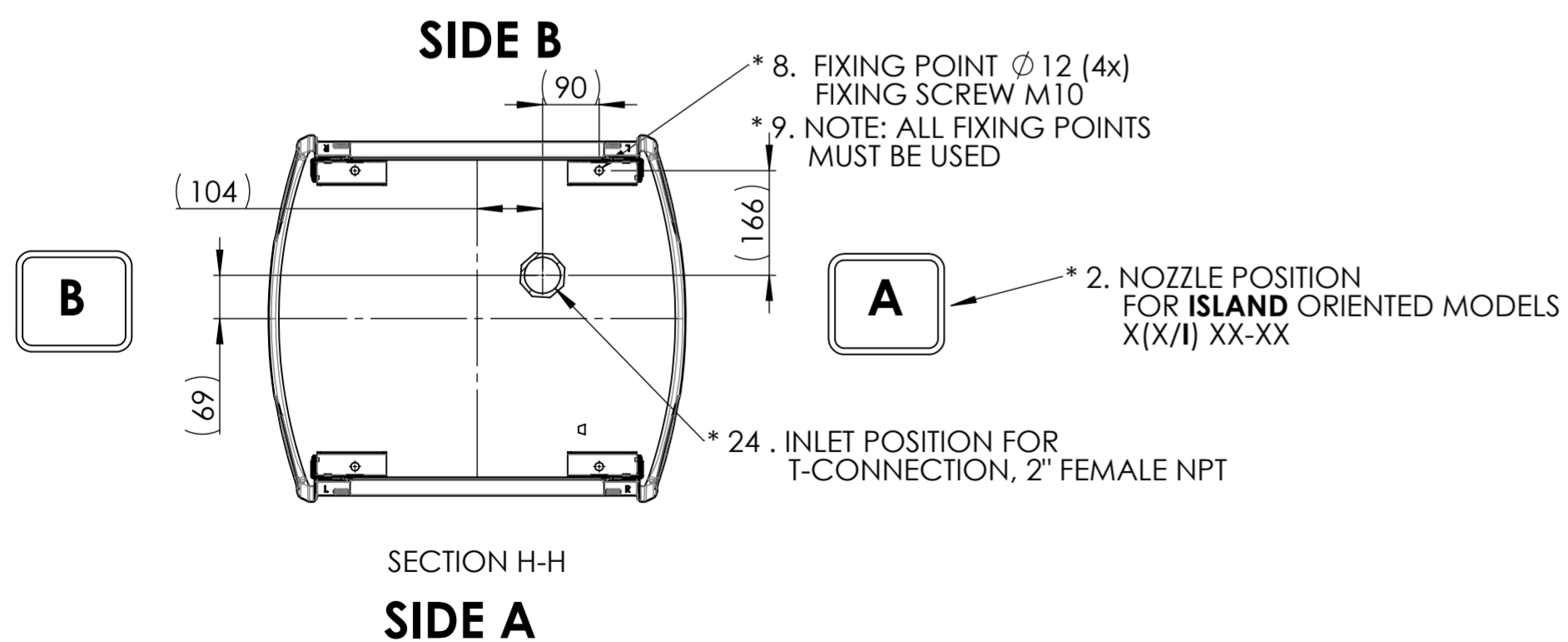
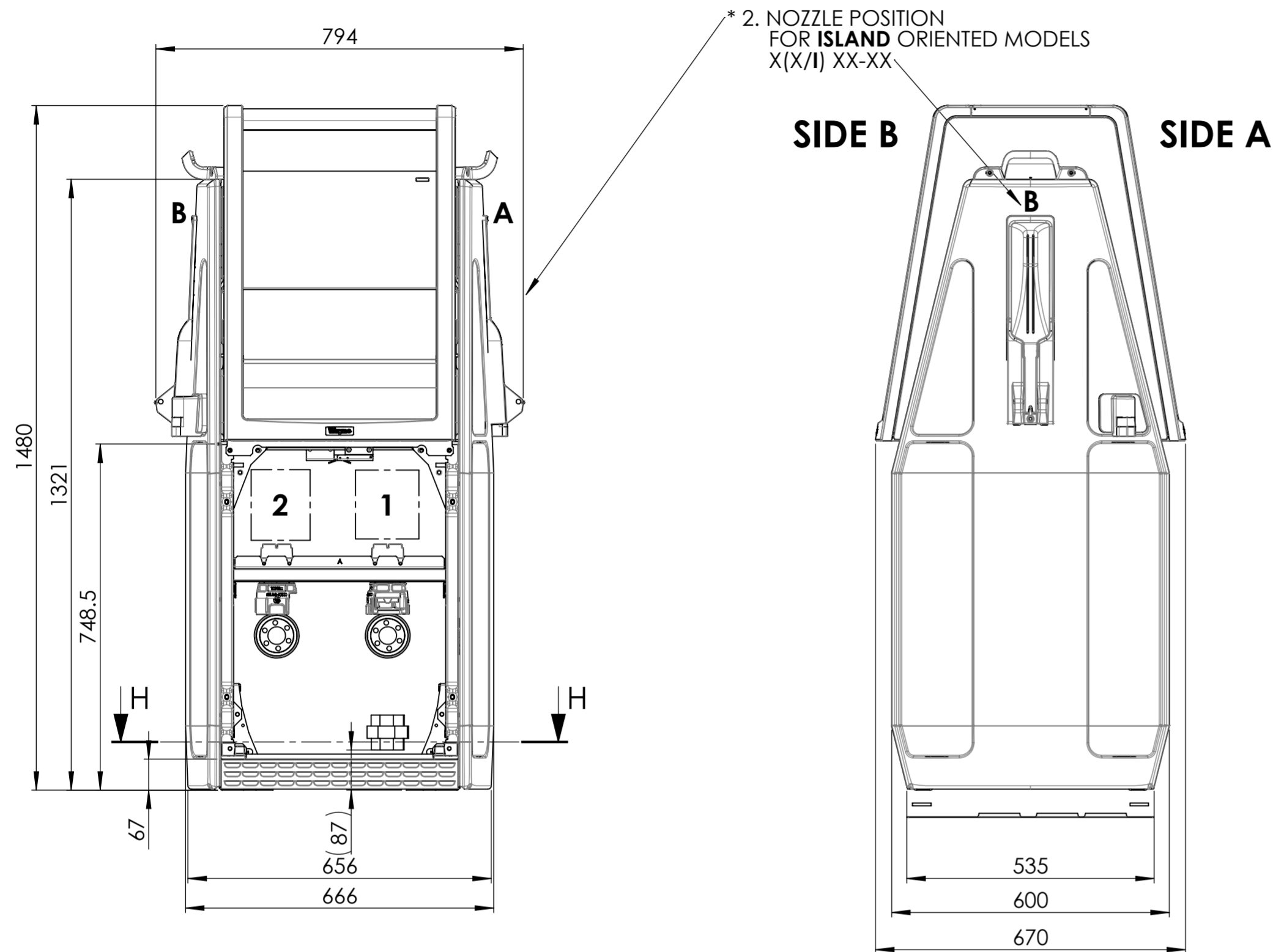
UNLESS NOTED OTHERWISE, DIMENSIONS ARE IN mm

"DOVER FUELING SOLUTIONS CONFIDENTIAL INFORMATION, SUBJECT TO NDA. THE DRAWINGS, TECHNICAL DATA, AND ALL OTHER INFORMATION SET FORTH IN THIS DOCUMENT COMPRISE TRADE SECRETS AND/OR OTHER CONFIDENTIAL INFORMATION THAT IS THE PROPERTY OF DOVER FUELING SOLUTIONS UK LTD. AND/OR ITS AFFILIATE(S) AND MAY BE SUBJECT TO COPYRIGHT OR OTHER PROTECTION. ACCESS TO AND/OR USE OF SUCH CONFIDENTIAL INFORMATION IS STRICTLY CONTROLLED AND LIMITED TO THE PURPOSE(S) FOR WHICH IT IS OR WAS PROVIDED, AND NO RECIPIENT IS PERMITTED TO USE, COPY, OR OTHERWISE DISCLOSE OR TRANSMIT SUCH INFORMATION, EXCEPT AS EXPRESSLY SET FORTH IN THE APPLICABLE NON-DISCLOSURE AGREEMENT(S), OR AS OTHERWISE AUTHORIZED IN WRITING BY, OR ON BEHALF OF, DOVER FUELING SOLUTIONS UK LTD. AND/OR ITS AFFILIATE(S). ALL RIGHTS RESERVED."

APPROVED BY	04.3		wu027290-0001
DRAWN BY	REV	DATE	ECN NO.
Leonardo Braga			

MATERIAL	DEBURR AND BREAK SHARP EDGES	SCALE	DO NOT SCALE DRAWING		Related Drawing
THICKNESS		1:10			
SURFACE TREATMENT	TITLE			DRAWING NO.	
SURFACE FINISH	INSTALLATION INSTRUCTION			WM053738	
GENERAL TOLERANCE	HELIX 1000, IEC, REMOTE			SHEET 3 OF 7	
REPLACED BY				A2	

120 LPM WITH T-CONNECTION INLET



* 25. THIS INSTRUCTION IS VALID FOR HELIX 1000 REMOTE MODELSON TABLE BELOW MANUFACTURED WITH T-CONNECTION OPTION

Model	Flow Rates L/min	Nozzle Position	Hydraulic
S(N/UI)11-210R 120			
S(N/UI)11-21R* 120			

NOTE : TOLERANCES FOR CONNECTION PIPES +/-10mm

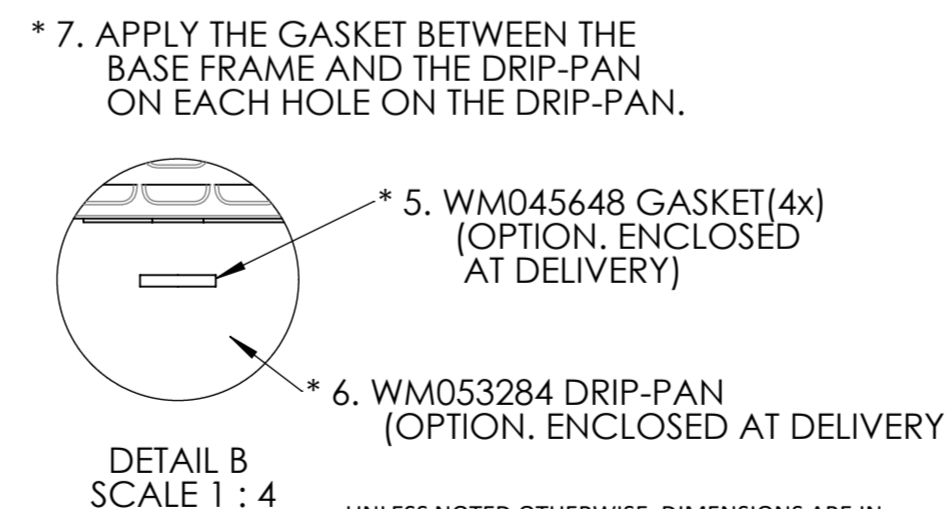
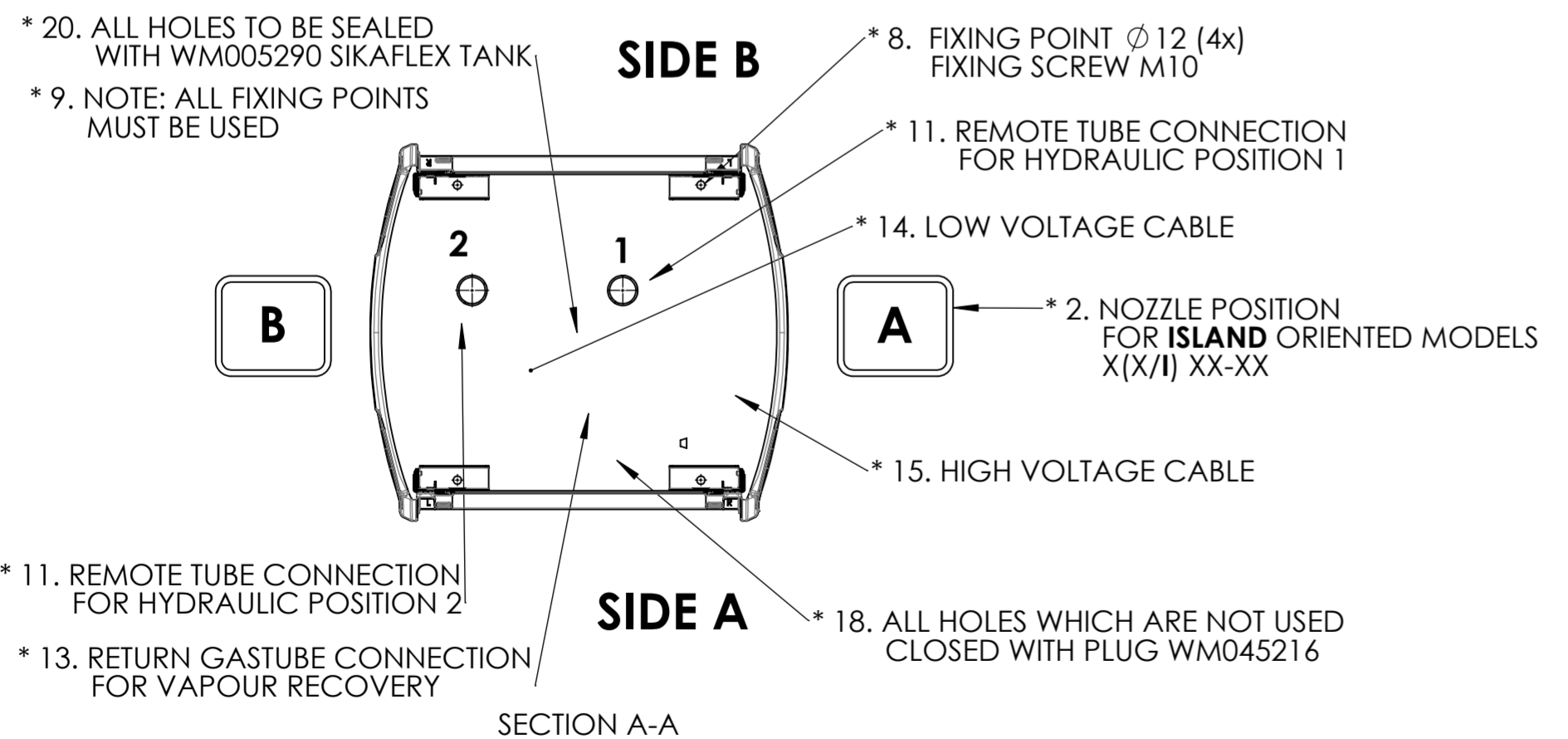
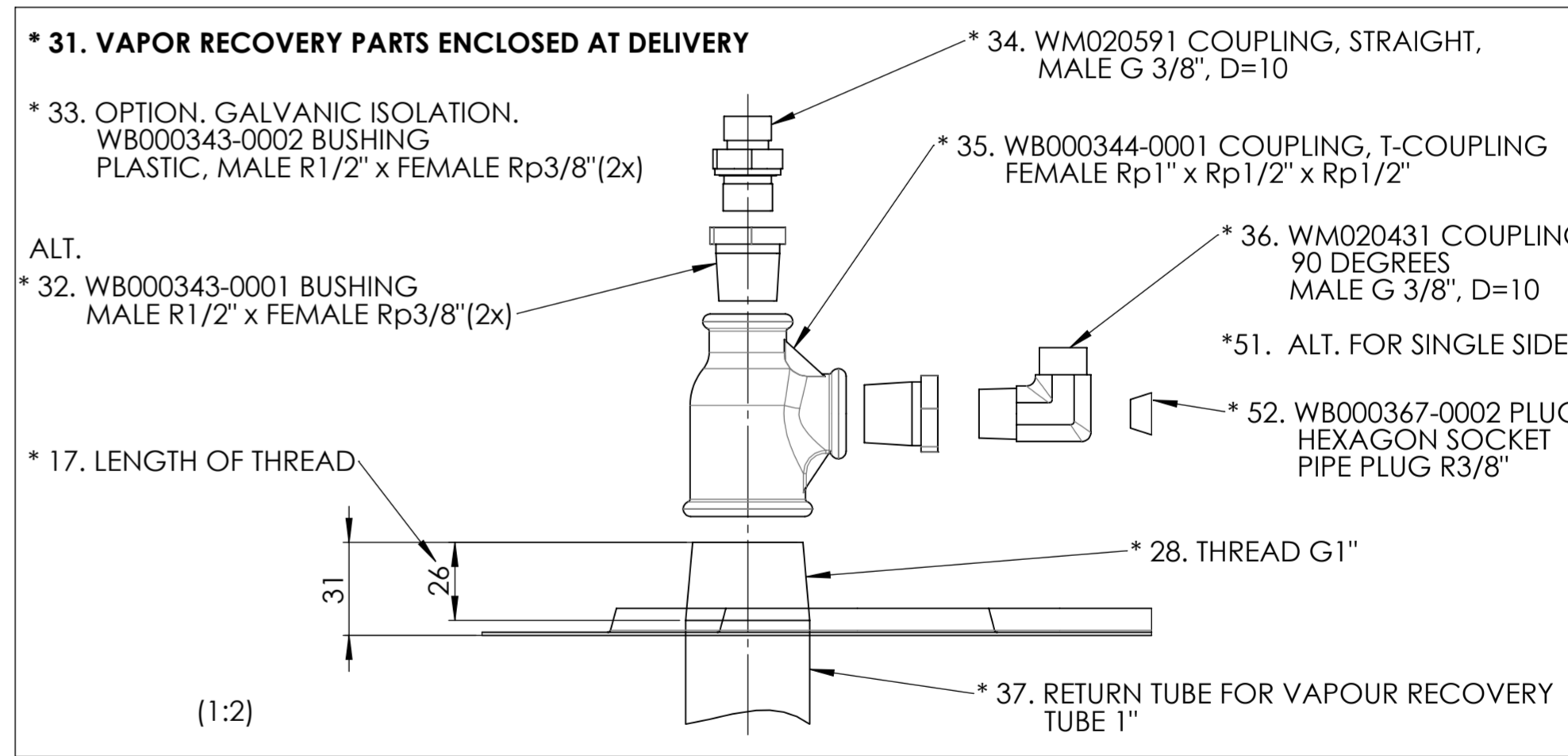
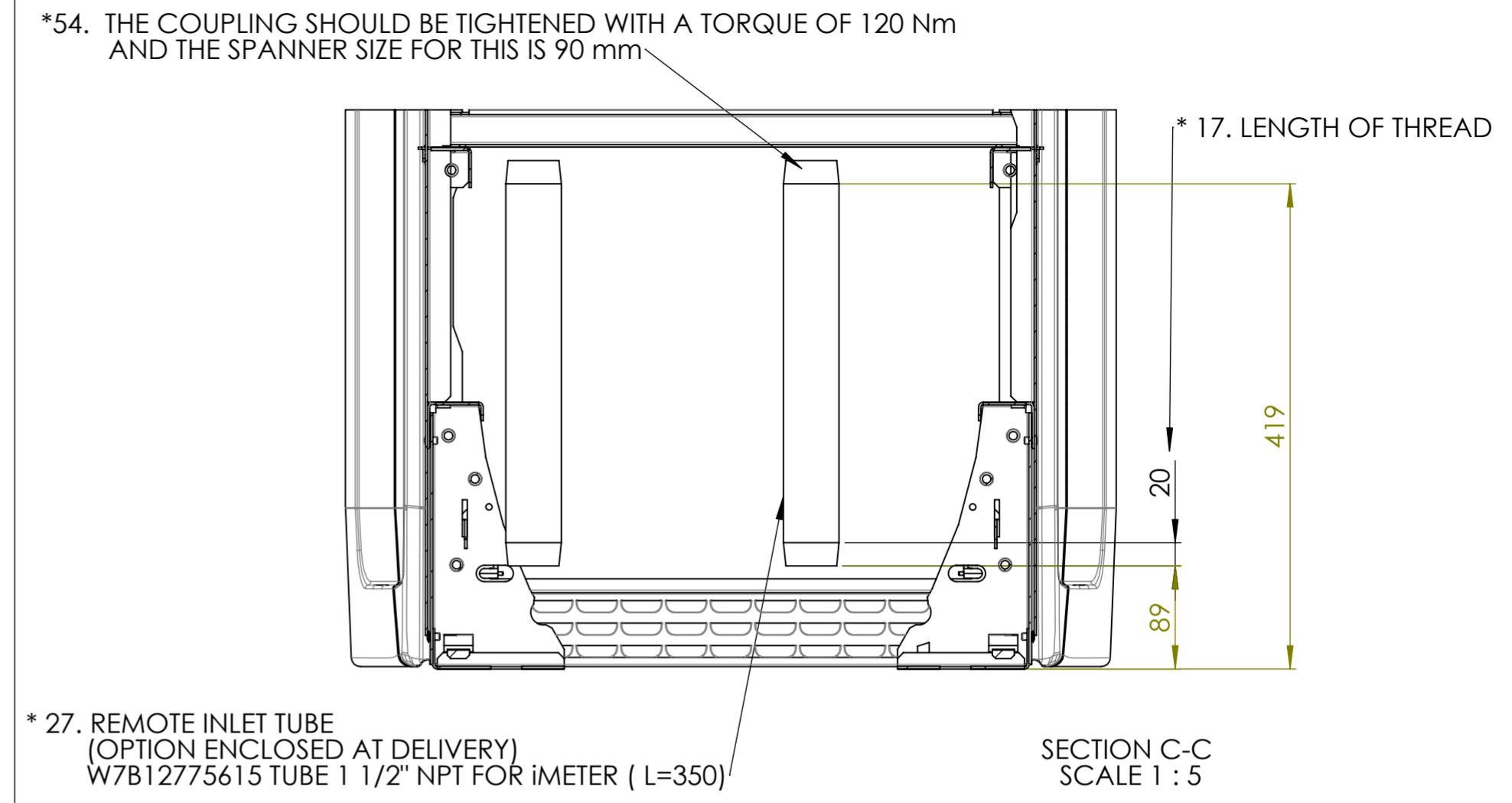
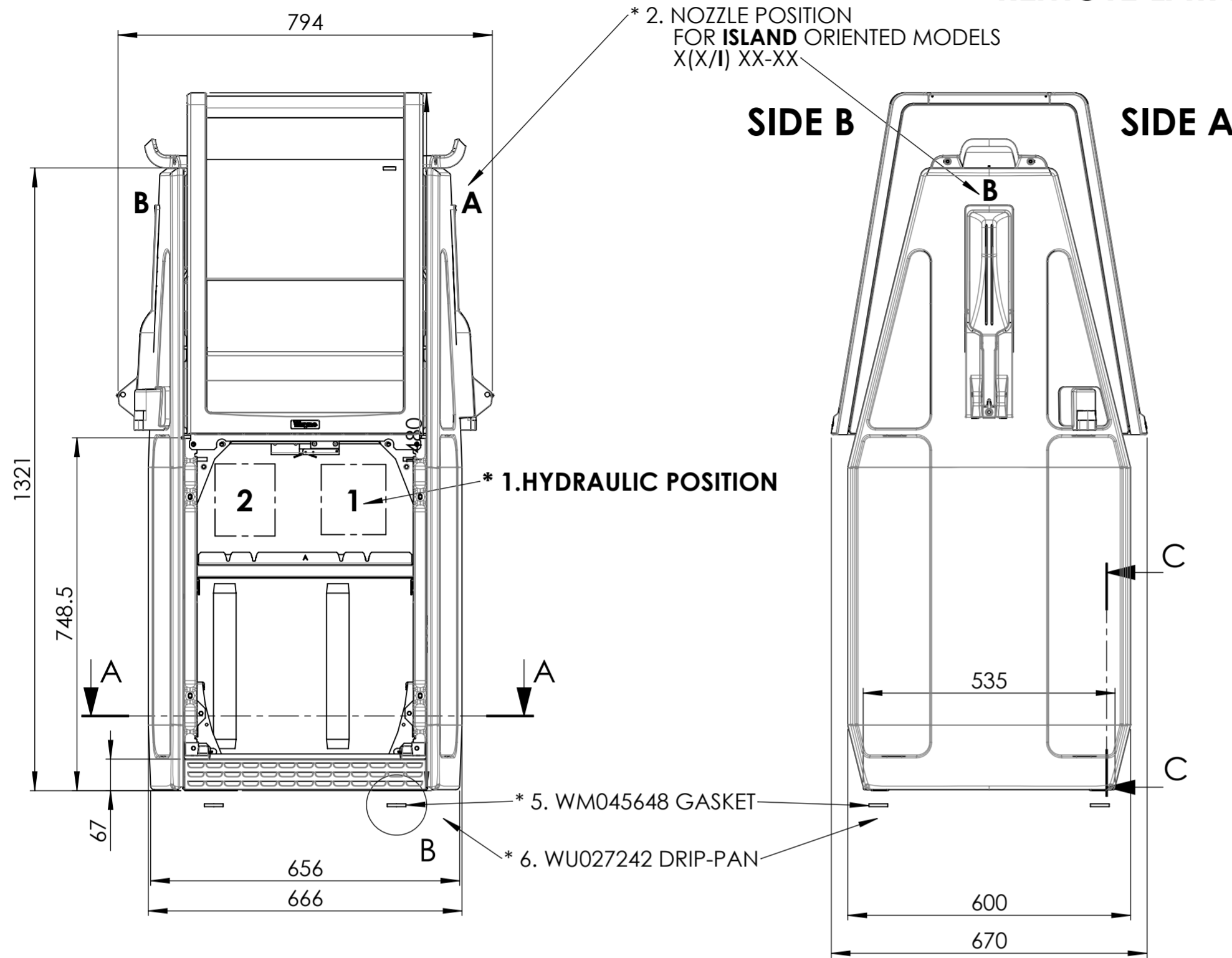
UNLESS NOTED OTHERWISE, DIMENSIONS ARE IN mm

MATERIAL	DEBURR AND BREAK SHARP EDGES	SCALE 1:10	DO NOT SCALE DRAWING		Related Drawing
THICKNESS	TITLE			DRAWING NO.	
SURFACE TREATMENT	INSTALLATION INSTRUCTION			WM053738	
GENERAL TOLERANCE	HELIX 1000, IEC, REMOTE			SHEET 4 OF 7	
REPLACED BY				A2	

"DOVER FUELING SOLUTIONS CONFIDENTIAL INFORMATION, SUBJECT TO NDA. THE DRAWINGS, TECHNICAL DATA, AND ALL OTHER INFORMATION SET FORTH IN THIS DOCUMENT COMPRISE TRADE SECRETS AND/OR OTHER CONFIDENTIAL INFORMATION THAT IS THE PROPERTY OF DOVER FUELING SOLUTIONS UK LTD. AND/OR ITS AFFILIATE(S) AND MAY BE SUBJECT TO COPYRIGHT OR OTHER PROTECTION. ACCESS TO AND/OR USE OF SUCH CONFIDENTIAL INFORMATION IS STRICTLY CONTROLLED AND LIMITED TO THE PURPOSE(S) FOR WHICH IT IS OR WAS PROVIDED, AND NO RECIPIENT IS PERMITTED TO USE, COPY, OR OTHERWISE DISCLOSE OR TRANSMIT SUCH INFORMATION, EXCEPT AS EXPRESSLY SET FORTH IN THE APPLICABLE NON-DISCLOSURE AGREEMENT(S), OR AS OTHERWISE AUTHORIZED IN WRITING BY, OR ON BEHALF OF, DOVER FUELING SOLUTIONS UK LTD. AND/OR ITS AFFILIATE(S). ALL RIGHTS RESERVED."

APPROVED BY	04.3		wu027290-0001
DRAWN BY	REV	DATE	ECN NO.
Leonardo Braga			

REMOTE LATAM



* 7. APPLY THE GASKET BETWEEN THE BASE FRAME AND THE DRIP-PAN ON EACH HOLE ON THE DRIP-PAN.

* 16. THE HOLLOW SPACE UNDER THE PUMP IS TO BE FILLED WITH FINE COARSE SAND 0-8 OR LECA-PELLETS 2-4.

* 21. THIS INSTRUCTION IS VALID FOR THE PUMP MODEL HELIX 1000 REMOTE

NOTE : TOLERANCES FOR CONNECTION PIPES +-10mm

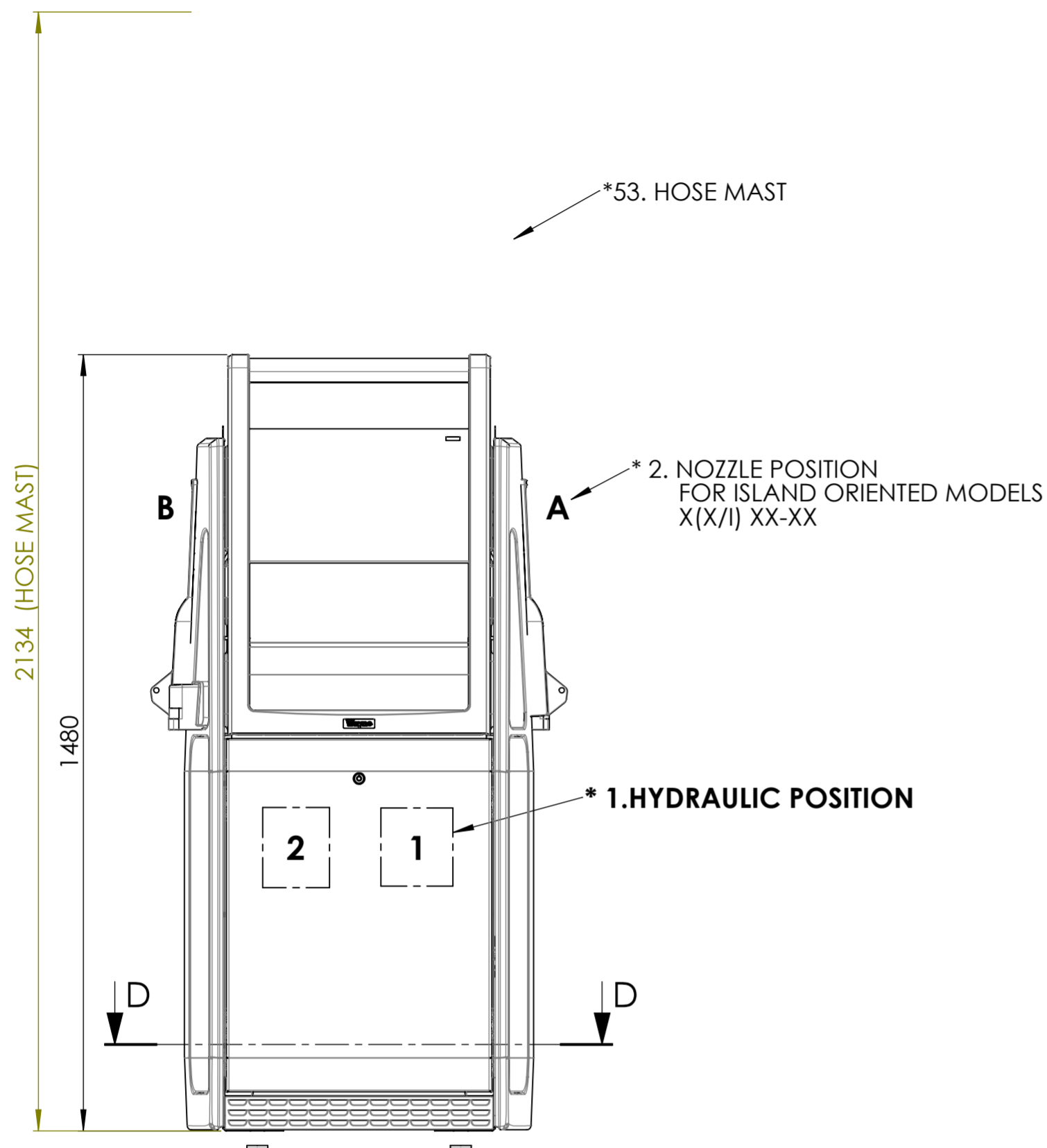
UNLESS NOTED OTHERWISE, DIMENSIONS ARE IN mm

"DOVER FUELING SOLUTIONS CONFIDENTIAL INFORMATION, SUBJECT TO NDA. THE DRAWINGS, TECHNICAL DATA, AND ALL OTHER INFORMATION SET FORTH IN THIS DOCUMENT COMPRISE TRADE SECRETS AND/OR OTHER CONFIDENTIAL INFORMATION THAT IS THE PROPERTY OF DOVER FUELING SOLUTIONS UK LTD. AND/OR ITS AFFILIATE(S) AND MAY BE SUBJECT TO COPYRIGHT OR OTHER PROTECTION. ACCESS TO AND/OR USE OF SUCH CONFIDENTIAL INFORMATION IS STRICTLY CONTROLLED AND LIMITED TO THE PURPOSE(S) FOR WHICH IT IS OR WAS PROVIDED, AND NO RECIPIENT IS PERMITTED TO USE, COPY, OR OTHERWISE DISCLOSE OR TRANSMIT SUCH INFORMATION, EXCEPT AS EXPRESSLY SET FORTH IN THE APPLICABLE NON-DISCLOSURE AGREEMENT(S), OR AS OTHERWISE AUTHORIZED IN WRITING BY, OR ON BEHALF OF, DOVER FUELING SOLUTIONS UK LTD. AND/OR ITS AFFILIATE(S). ALL RIGHTS RESERVED.

APPROVED BY	04.3	WU027290-0001
DRAWN BY	REV	DATE
Leonardo Braga		ECN NO.

MATERIAL	DEBURR AND BREAK SHARP EDGES	SCALE 1:10	DO NOT SCALE DRAWING		Related Drawing
THICKNESS	SURFACE TREATMENT	TITLE	INSTALLATION INSTRUCTION		DRAWING NO.
SURFACE FINISH	GENERAL TOLERANCE	HELIX 1000, IEC, REMOTE		WM053738	
REPLACED BY				SHEET 5 OF 7	

REMOTE LATAM

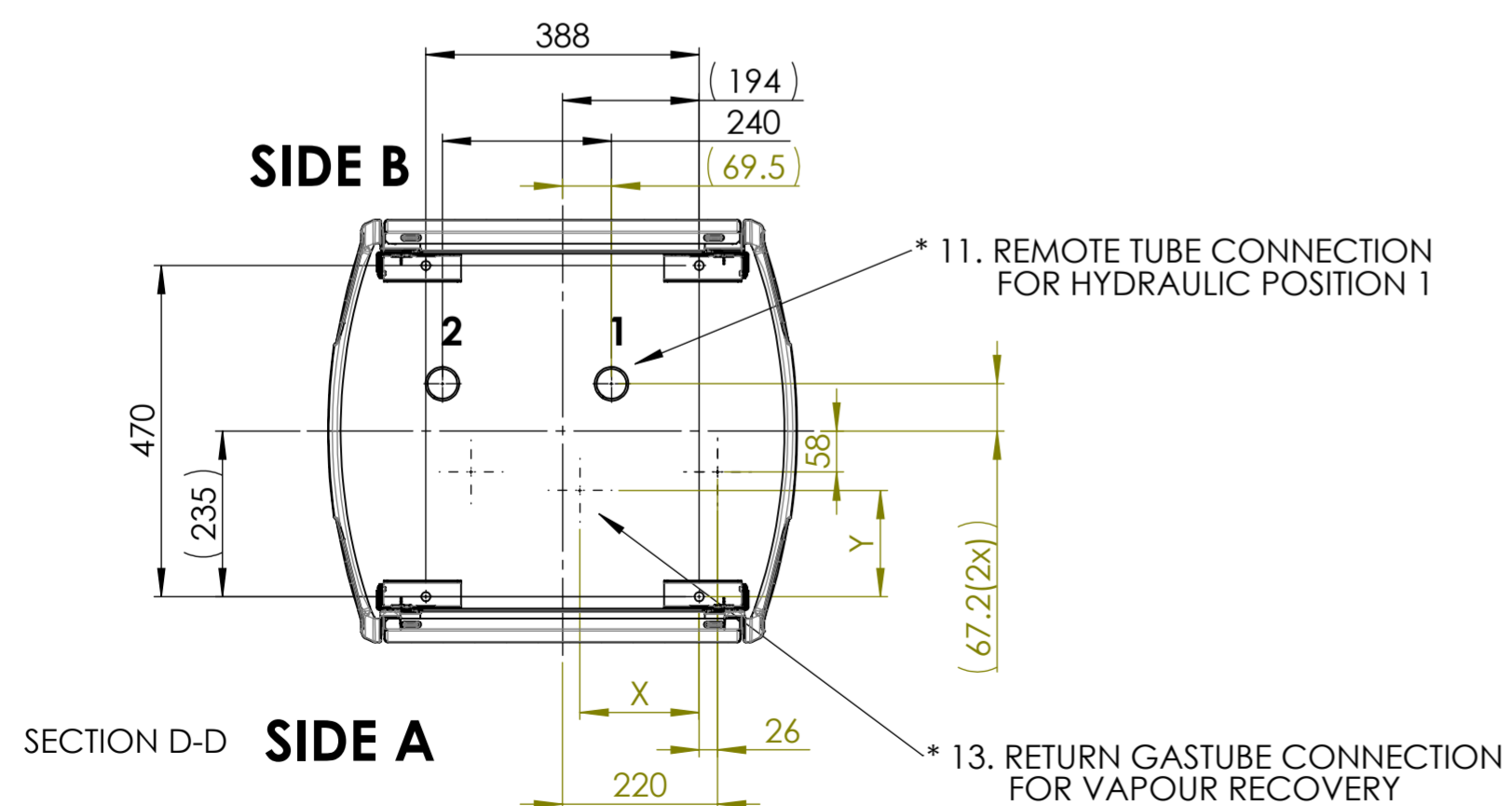


* 21. THIS INSTRUCTION IS VALID FOR HELIX 1000 REMOTE MODELS

Model	Flow Rates L/min	Nozzle Position	Hydraulic
S(N/UI)11-110R			
S(N/UI)11-11R*			
S(N/UI)11-110R 90			
S(N/UI)11-210R 120			
S(N/UI)11-21R* 120			
S(N/UI)11-21R* 120/40			
S(N/UI)22-211R			
S(N/UI)11-110R DEF			
S(N/UI)11-11R*			

VAPOUR RECOVERY POSITION TABLE

	SINGLE-PHASE VR	THREE-PHASE VR
X	157.5	169
Y	72	151

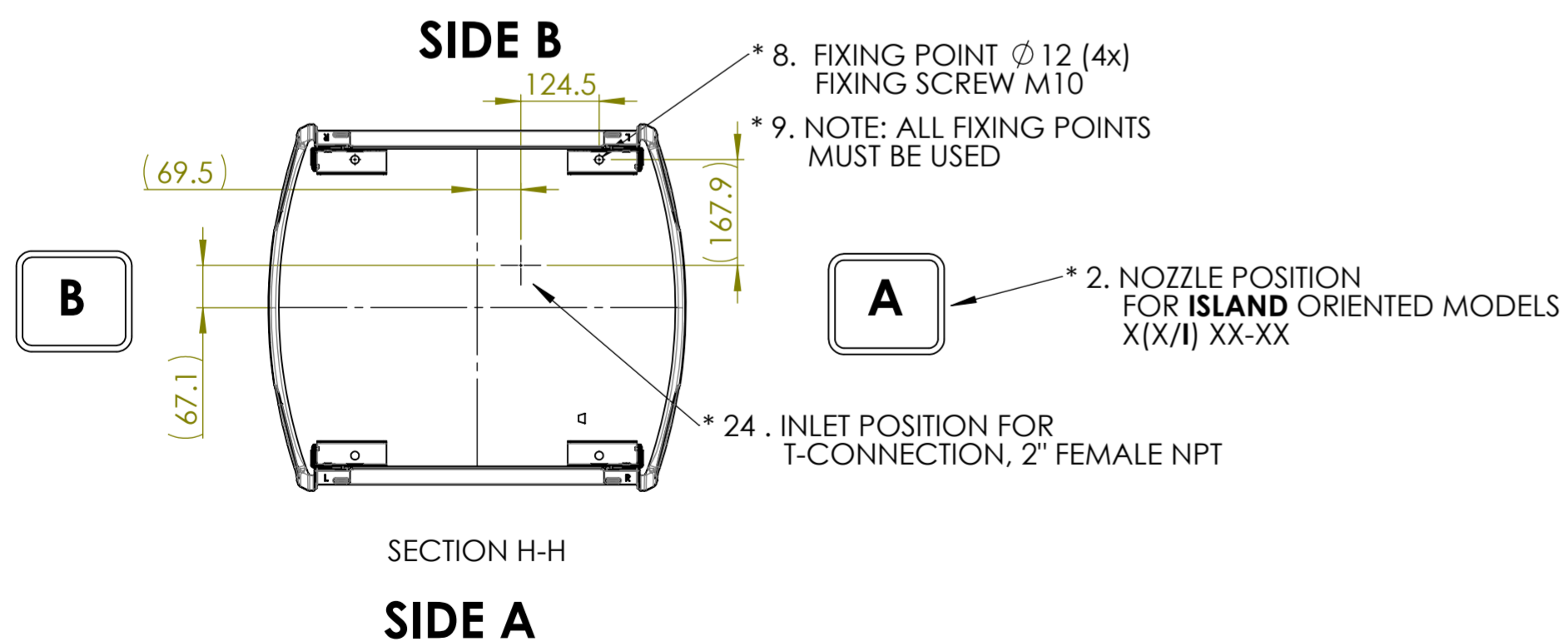
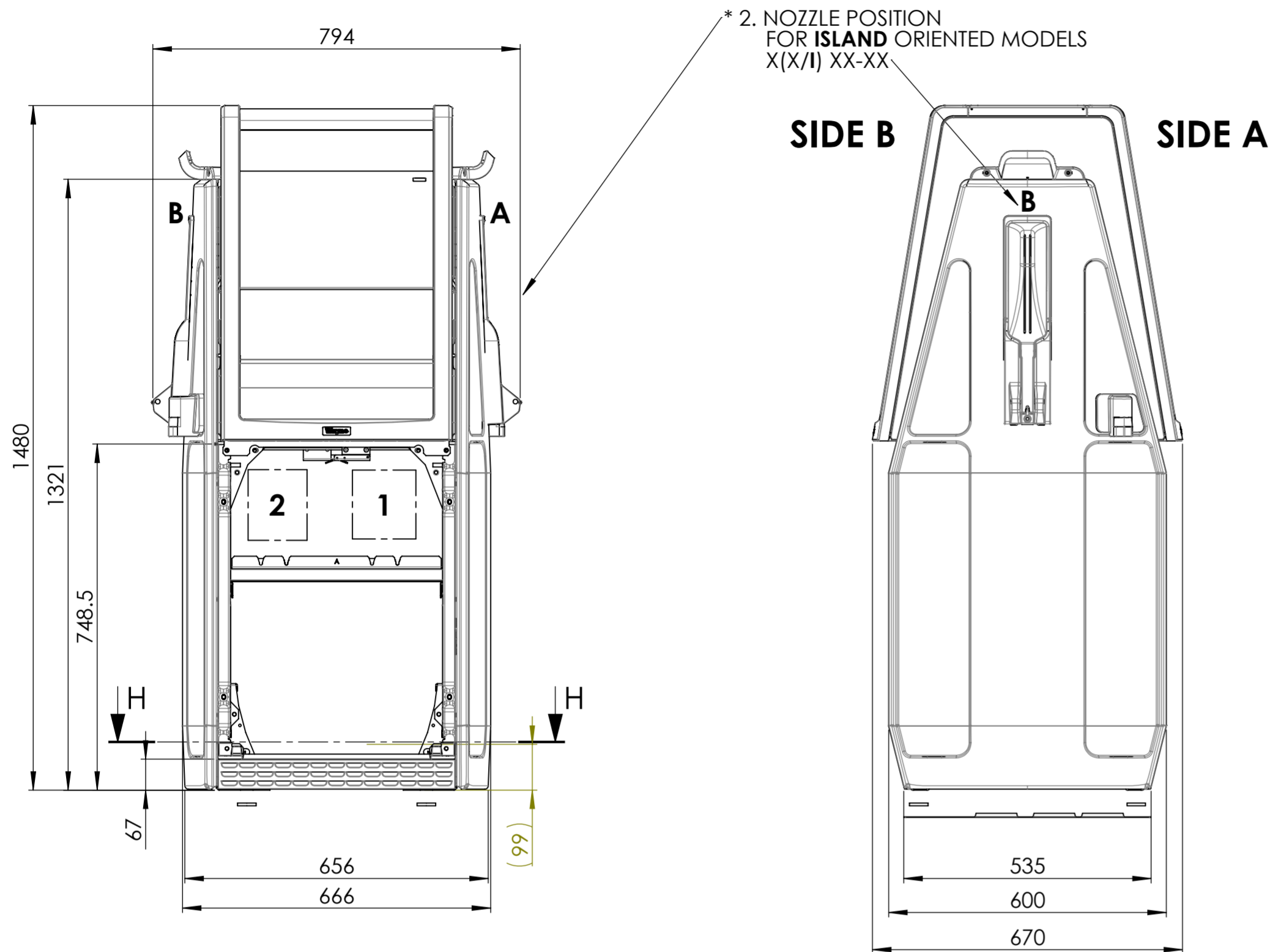


NOTE : TOLERANCES FOR CONNECTION PIPES +-10mm

UNLESS NOTED OTHERWISE, DIMENSIONS ARE IN mm

MATERIAL	DEBURR AND BREAK SHARP EDGES	SCALE 1:10	DO NOT SCALE DRAWING		Related Drawing
THICKNESS	TITLE		DRAWING NO.		A2
SURFACE TREATMENT	INSTALLATION INSTRUCTION		WM053738		
SURFACE FINISH	HELIX 1000, IEC, REMOTE		SHEET 6 OF 7		
GENERAL TOLERANCE					
REPLACED BY					

120 LPM WITH T-CONNECTION INLET LATAM



* 25. THIS INSTRUCTION IS VALID FOR HELIX 1000 REMOTE MODELSON TABLE BELOW MANUFACTURED WITH T-CONNECTION OPTION

Model	Flow Rates L/min	Nozzle Position	Hydraulic
S(N/UI)11-210R 120			
S(N/UI)11-21R* 120			

NOTE : TOLERANCES FOR CONNECTION PIPES +/-10mm

UNLESS NOTED OTHERWISE, DIMENSIONS ARE IN mm

MATERIAL	DEBURR AND BREAK SHARP EDGES	SCALE 1:10	DO NOT SCALE DRAWING		Related Drawing
THICKNESS	TITLE			DRAWING NO. WM053738 SHEET 7 OF 7	
SURFACE TREATMENT	INSTALLATION INSTRUCTION				
GENERAL TOLERANCE	HELIX 1000, IEC, REMOTE				
REPLACED BY					

"DOVER FUELING SOLUTIONS CONFIDENTIAL INFORMATION, SUBJECT TO NDA. THE DRAWINGS, TECHNICAL DATA, AND ALL OTHER INFORMATION SET FORTH IN THIS DOCUMENT COMPRISE TRADE SECRETS AND/OR OTHER CONFIDENTIAL INFORMATION THAT IS THE PROPERTY OF DOVER FUELING SOLUTIONS UK LTD. AND/OR ITS AFFILIATE(S) AND MAY BE SUBJECT TO COPYRIGHT OR OTHER PROTECTION. ACCESS TO AND/OR USE OF SUCH CONFIDENTIAL INFORMATION IS STRICTLY CONTROLLED AND LIMITED TO THE PURPOSE(S) FOR WHICH IT IS OR WAS PROVIDED, AND NO RECIPIENT IS PERMITTED TO USE, COPY, OR OTHERWISE DISCLOSE OR TRANSMIT SUCH INFORMATION, EXCEPT AS EXPRESSLY SET FORTH IN THE APPLICABLE NON-DISCLOSURE AGREEMENT(S), OR AS OTHERWISE AUTHORIZED IN WRITING BY, OR ON BEHALF OF, DOVER FUELING SOLUTIONS UK LTD. AND/OR ITS AFFILIATE(S). ALL RIGHTS RESERVED."

APPROVED BY	04.3		wu027290-0001
DRAWN BY	REV	DATE	ECN NO.
Leonardo Braga			