

PAGE	MANUFACTURE SITE	IMPLEMENTATION DATE
1,2	MALMO, DUNDEE, BRAZIL	N/A
3,4,5	BRAZIL	FROM 2024 AUGUST

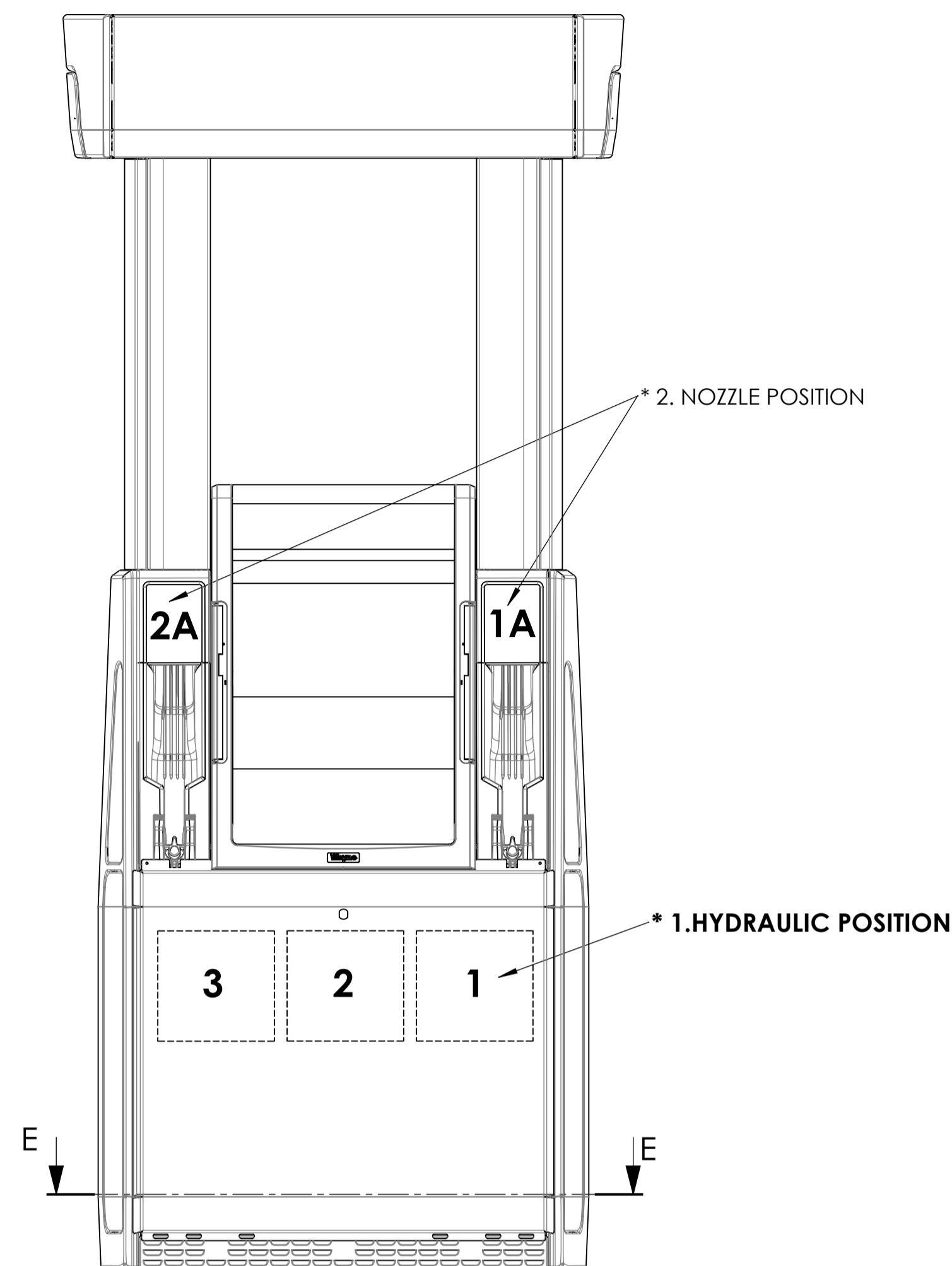
UNLESS NOTED OTHERWISE, DIMENSIONS ARE IN mm

"DOVER FUELING SOLUTIONS CONFIDENTIAL INFORMATION, SUBJECT TO NDA. THE DRAWINGS, TECHNICAL DATA, AND ALL OTHER INFORMATION SET FORTH IN THIS DOCUMENT COMPRISE TRADE SECRETS AND/OR OTHER CONFIDENTIAL INFORMATION THAT IS THE PROPERTY OF DOVER FUELING SOLUTIONS UK LTD. AND/OR ITS AFFILIATE(S) AND MAY BE SUBJECT TO COPYRIGHT OR OTHER PROTECTION. ACCESS TO AND/OR USE OF SUCH CONFIDENTIAL INFORMATION IS STRICTLY CONTROLLED AND LIMITED TO THE PURPOSE(S) FOR WHICH IT IS OR WAS PROVIDED, AND NO RECIPIENT IS PERMITTED TO USE, COPY, OR OTHERWISE DISCLOSE OR TRANSMIT SUCH INFORMATION, EXCEPT AS EXPRESSLY SET FORTH IN THE APPLICABLE NON-DISCLOSURE AGREEMENT(S), OR AS OTHERWISE AUTHORIZED IN WRITING BY, OR ON BEHALF OF, DOVER FUELING SOLUTIONS UK LTD. AND/OR ITS AFFILIATE(S). ALL RIGHTS RESERVED."

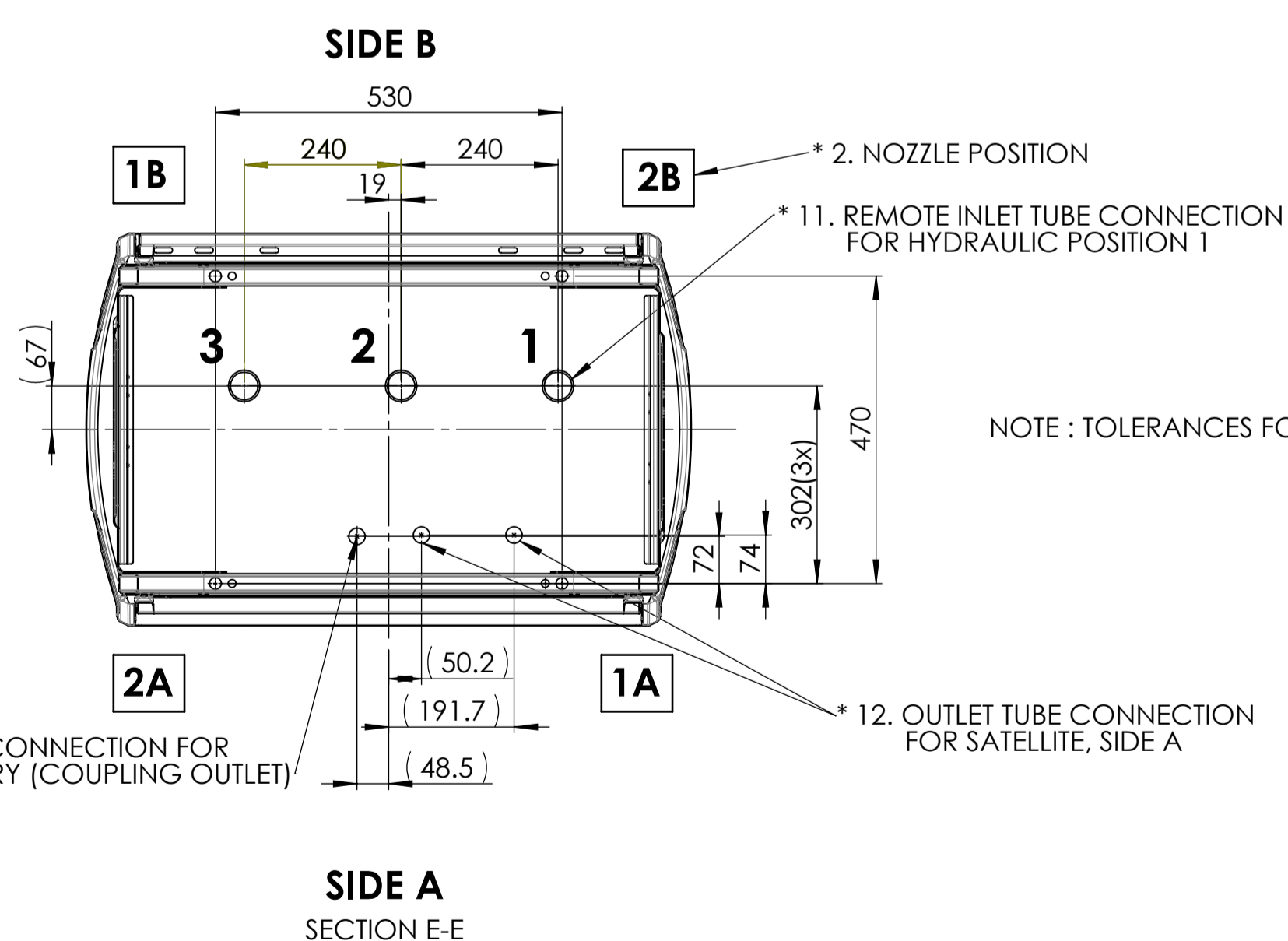
APPROVED BY Ivens Leal	04	2024-06-13	wu027290-0001
DRAWN BY Leonardo Braga	REV	DATE	ECN NO.

MATERIAL	DEBURR AND BREAK SHARP EDGES	SCALE 1:9	DO NOT SCALE DRAWING		Related Drawing
THICKNESS	SURFACE TREATMENT	TITLE INSTALLATION INSTRUCTION			DRAWING NO. WM047458
SURFACE FINISH	GENERAL TOLERANCE	HELIX 4000, IEC, REMOTE			SHEET 1 OF 5
REPLACED BY					A1

* 21. THIS INSTRUCTION IS VALID FOR HELIX 4000 REMOTE MODELS
ACCORDING TO DOCUMENT (HYDRAULIC CONFIGURATIONS WM042531)



Model	Flow Rates L/min	Equip. Sides	Nozzle Position	Hydraulic
H(N/LU) 11-11R	40/40	Both	1A + 1B	1
H(N/LU) 11-110R	40	A	1A	1
H(N/LU) 11-21R 120	120/120 (90 SIM.)	Both	1A + 1B	1 + 2
H(N/LU) 11-22R 120/40	120/40	Both	1A + 1B, 2A + 2B	1 + 2
H(N/LU) 11-211R 120/40	120/40	Both	1A + 1B	1 + 2
H(N/LU) 11-210R 120	120	A	1A	1 + 2
H(N/LU) 22-22R	40/40, 40/40	Both	1A + 1B, 2A + 2B	1 + 2
H(N/LU) 22-220R	40/40	A	1A + 2A	1 + 2
H(N/LU) 22-22RU	40/40, 40/40	Both	1A + 1B, 2A + 2B	1 + 2



* 13. RETURN GASTUBE CONNECTION FOR VAPOUR RECOVERY (COUPLING OUTLET)

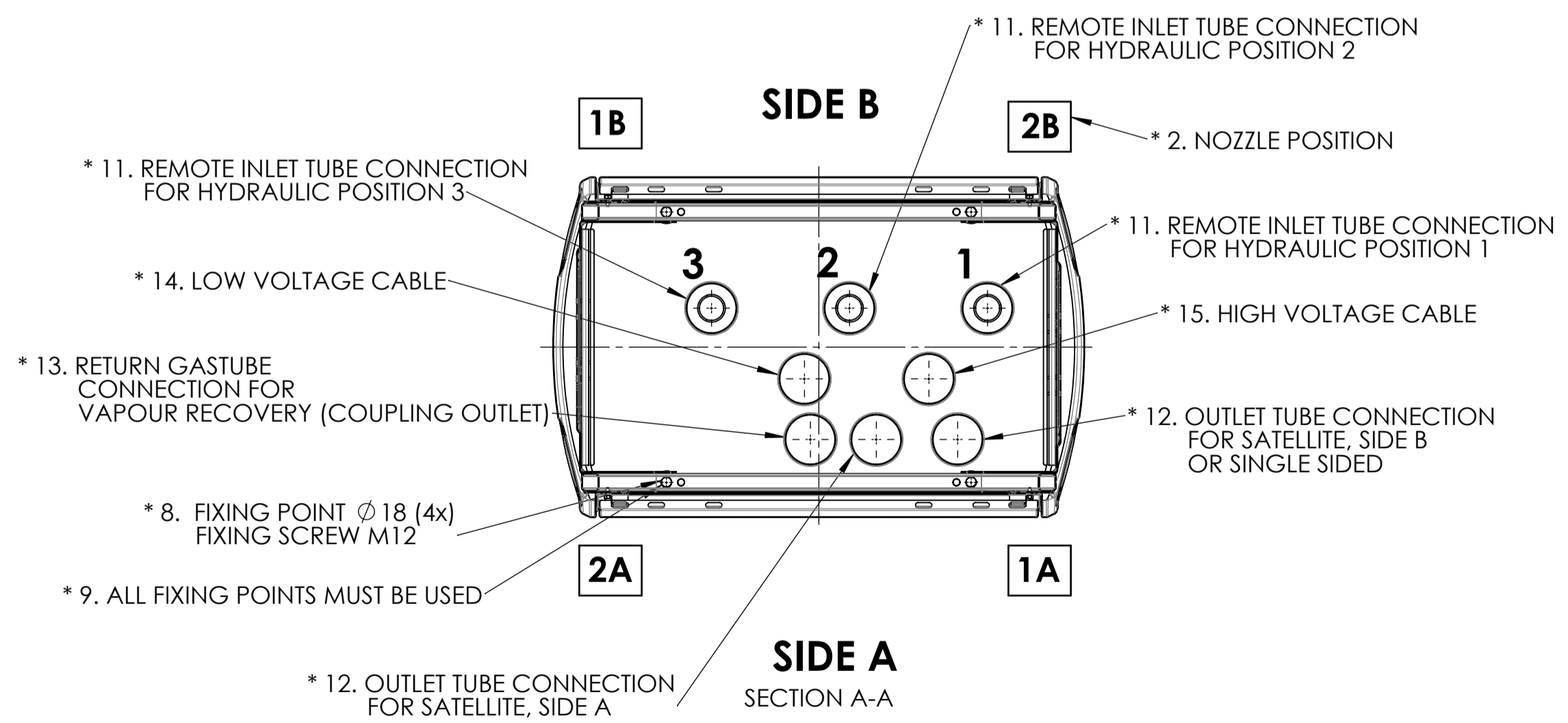
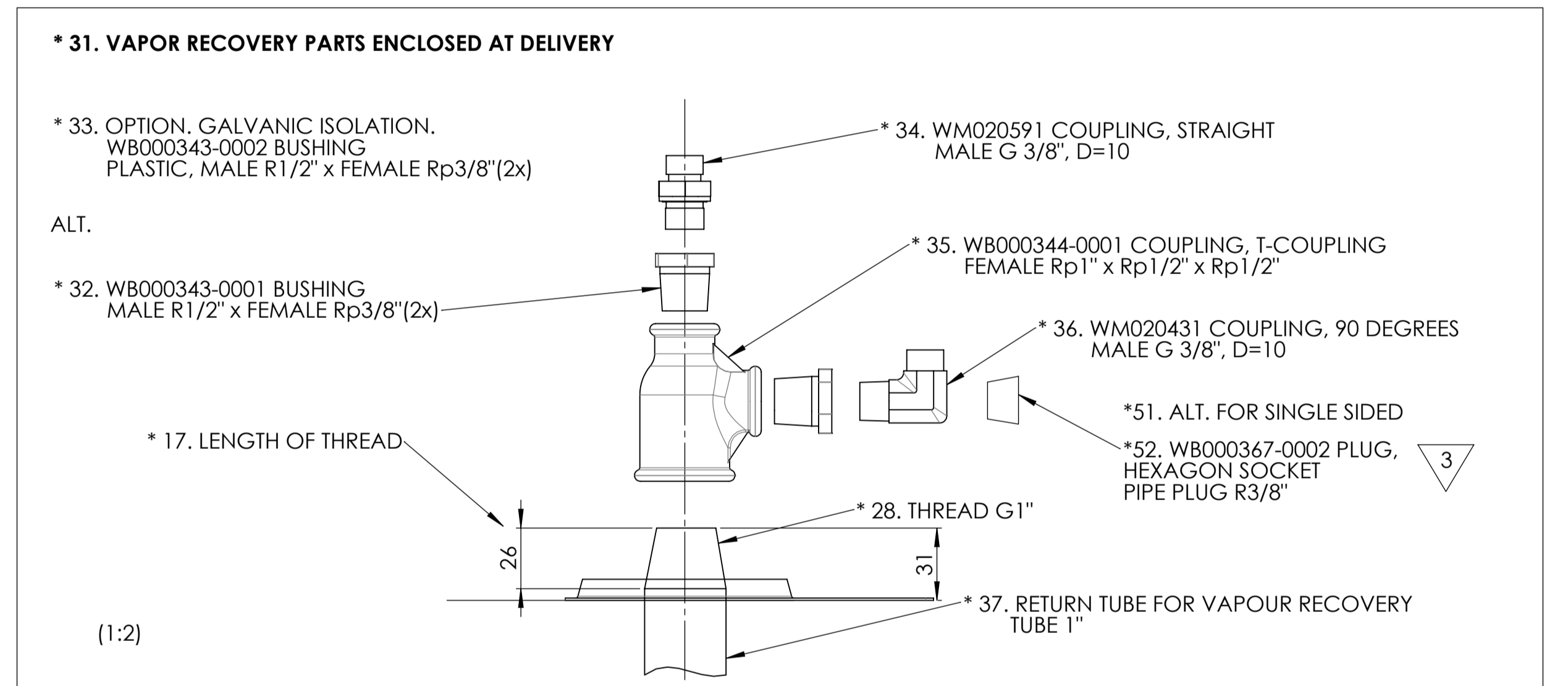
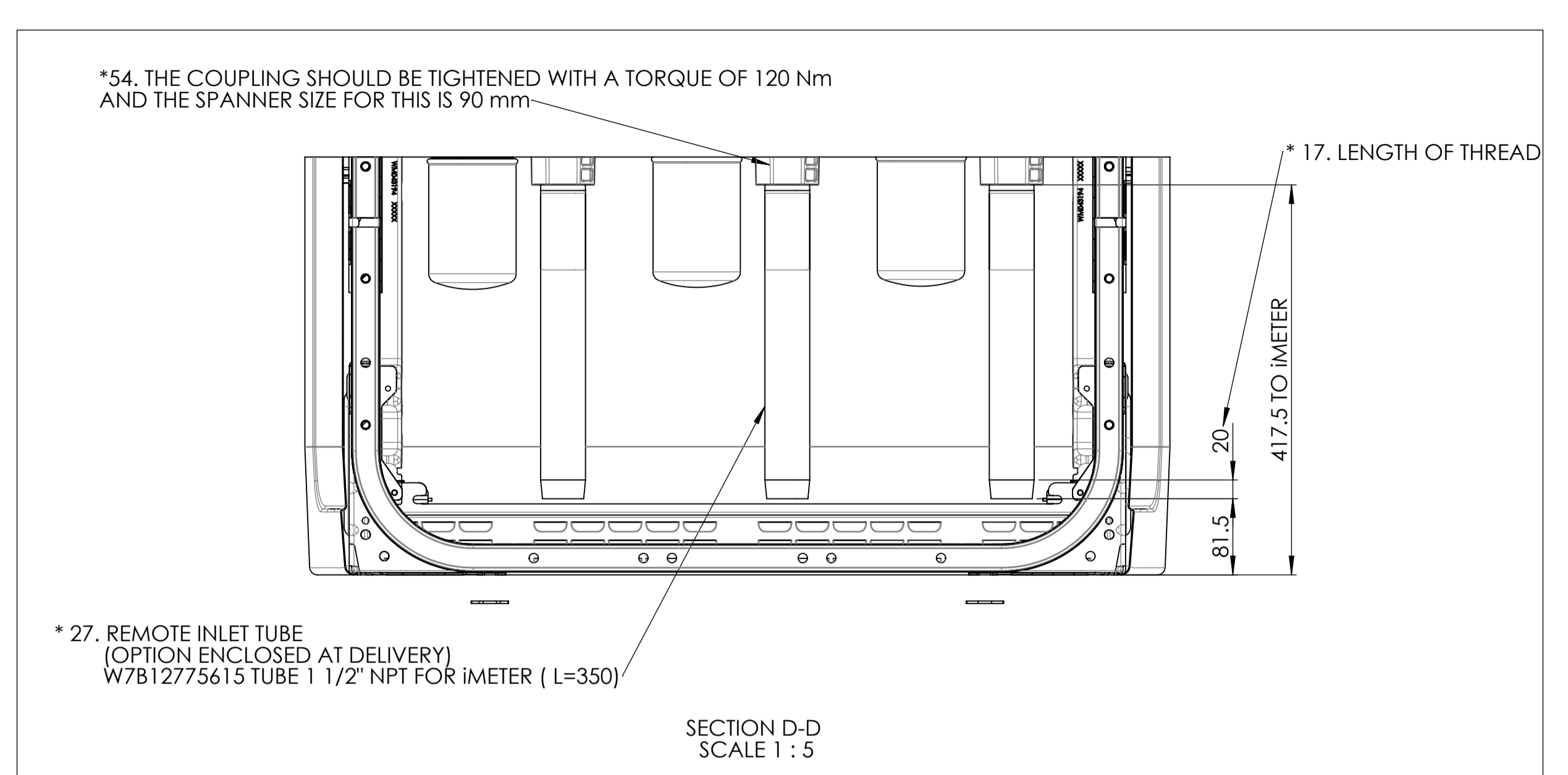
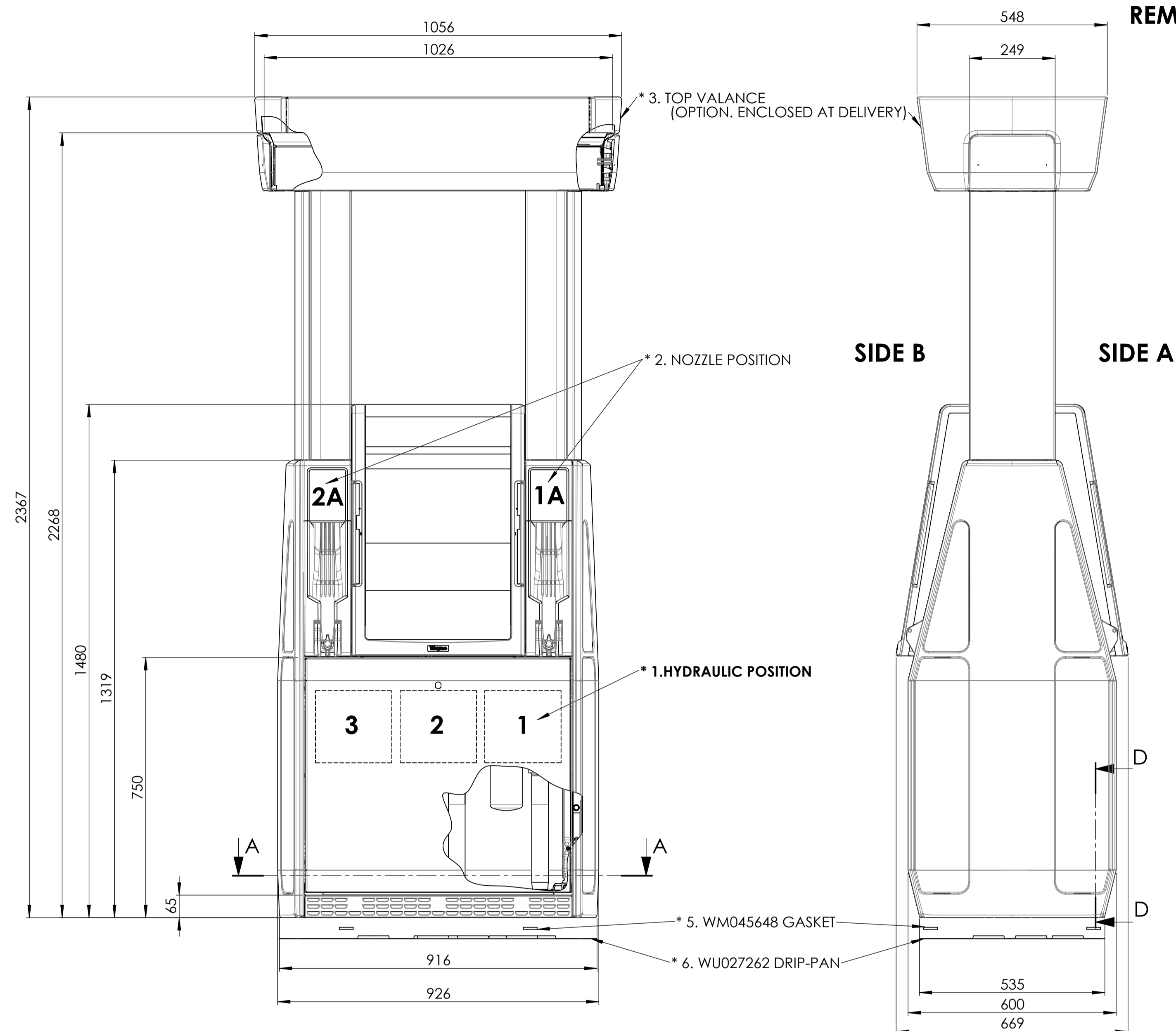
NOTE : TOLERANCES FOR CONNECTION PIPES +/-10mm

UNLESS NOTED OTHERWISE, DIMENSIONS ARE IN mm

"DOVER FUELING SOLUTIONS CONFIDENTIAL INFORMATION, SUBJECT TO NDA. THE DRAWINGS, TECHNICAL DATA, AND ALL OTHER INFORMATION SET FORTH IN THIS DOCUMENT COMPRISE TRADE SECRETS AND/OR OTHER CONFIDENTIAL INFORMATION THAT IS THE PROPERTY OF DOVER FUELING SOLUTIONS UK LTD. AND/OR ITS AFFILIATE(S) AND MAY BE SUBJECT TO COPYRIGHT OR OTHER PROTECTION. ACCESS TO AND/OR USE OF SUCH CONFIDENTIAL INFORMATION IS STRICTLY CONTROLLED AND LIMITED TO THE PURPOSE(S) FOR WHICH IT IS OR WAS PROVIDED, AND NO RECIPIENT IS PERMITTED TO USE, COPY, OR OTHERWISE DISCLOSE OR TRANSMIT SUCH INFORMATION, EXCEPT AS EXPRESSLY SET FORTH IN THE APPLICABLE NON-DISCLOSURE AGREEMENT(S), OR AS OTHERWISE AUTHORIZED IN WRITING BY, OR ON BEHALF OF, DOVER FUELING SOLUTIONS UK LTD. AND/OR ITS AFFILIATE(S). ALL RIGHTS RESERVED."

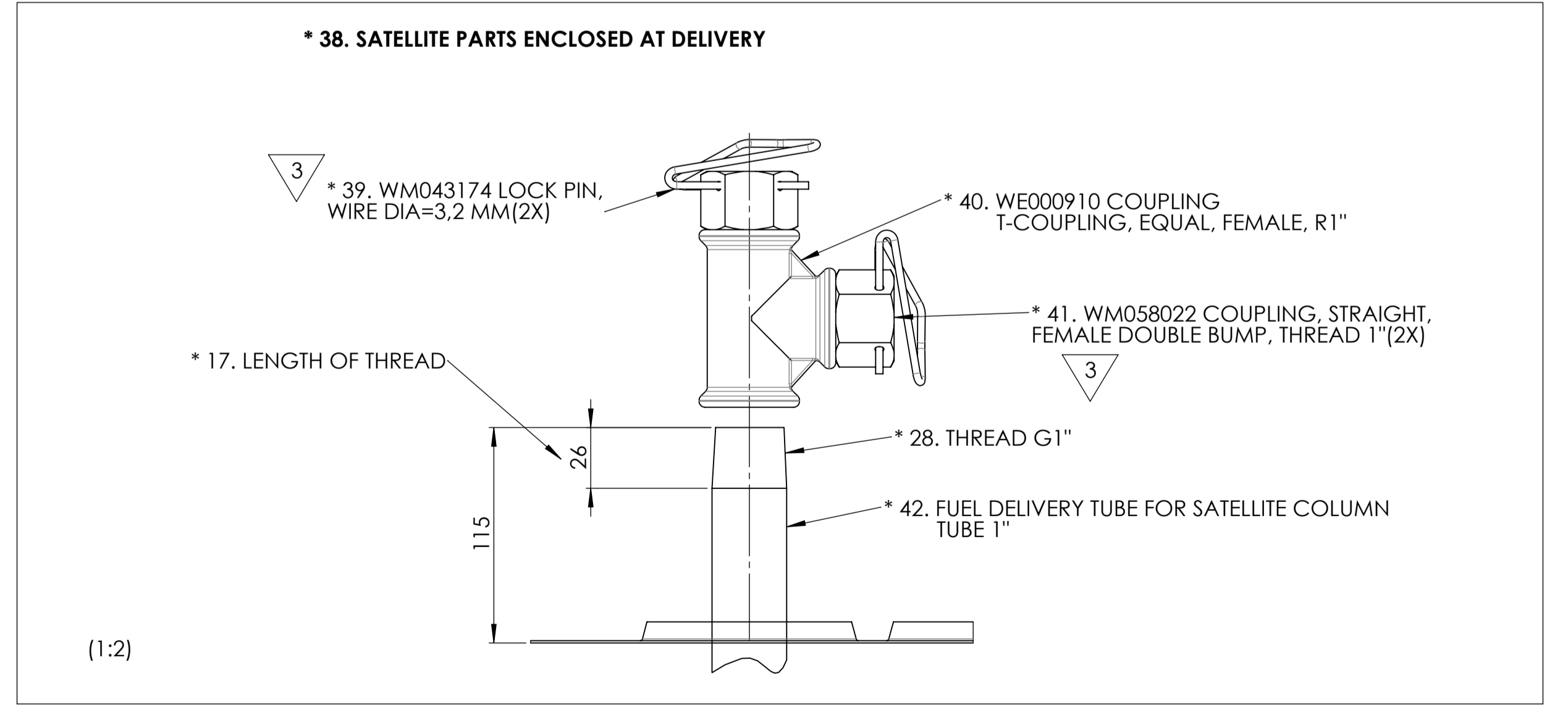
APPROVED BY Ivens Leal	04	2024-06-13	wu027290-0001
DRAWN BY Leonardo Braga	REV	DATE	ECN NO.

MATERIAL	DEBURR AND BREAK SHARP EDGES	SCALE 1:9	DO NOT SCALE DRAWING		Related Drawing
THICKNESS	SURFACE TREATMENT	TITLE INSTALLATION INSTRUCTION			DRAWING NO. WM047458
SURFACE FINISH	GENERAL TOLERANCE	REPLACED BY			SHEET 2 OF 5



* 16. THE HOLLOW SPACE UNDER THE PUMP IS TO BE FILLED WITH FINE COARSE SAND 0-8 OR LECA-PELLETS 2-4.

* 21. THIS INSTRUCTION IS VALID FOR THE PUMP MODEL HELIX 4000 REMOTE



UNLESS NOTED OTHERWISE, DIMENSIONS ARE IN mm

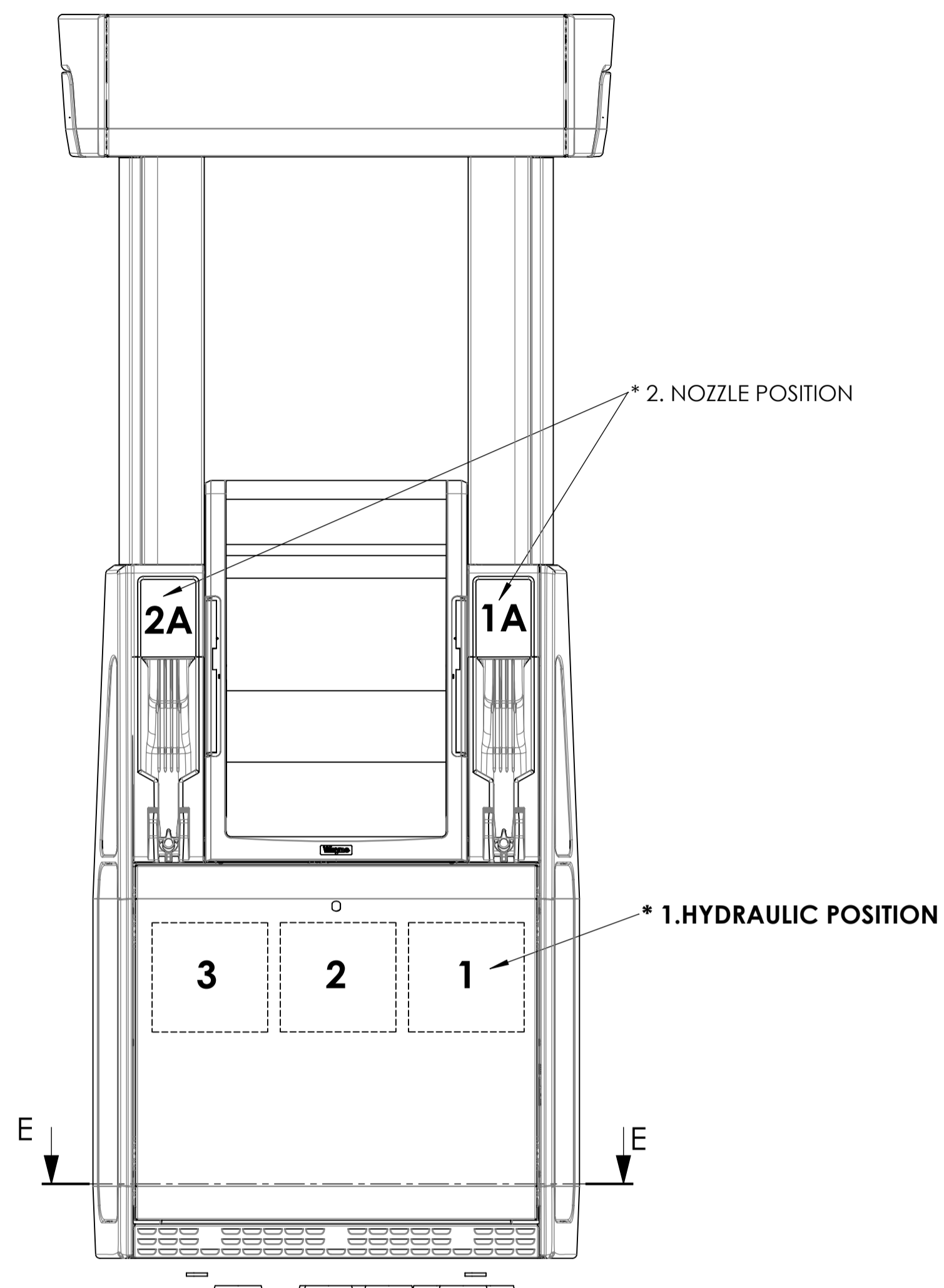
"DOVER FUELING SOLUTIONS CONFIDENTIAL INFORMATION, SUBJECT TO NDA. THE DRAWINGS, TECHNICAL DATA, AND ALL OTHER INFORMATION SET FORTH IN THIS DOCUMENT COMPRISE TRADE SECRETS AND/OR OTHER CONFIDENTIAL INFORMATION THAT IS THE PROPERTY OF DOVER FUELING SOLUTIONS UK LTD. AND/OR ITS AFFILIATE(S) AND MAY BE SUBJECT TO COPYRIGHT OR OTHER PROTECTION. ACCESS TO AND/OR USE OF SUCH CONFIDENTIAL INFORMATION IS STRICTLY CONTROLLED AND LIMITED TO THE PURPOSE(S) FOR WHICH IT IS OR WAS PROVIDED, AND NO RECIPIENT IS PERMITTED TO USE, COPY, OR OTHERWISE DISCLOSE OR TRANSMIT SUCH INFORMATION, EXCEPT AS EXPRESSLY SET FORTH IN THE APPLICABLE NON-DISCLOSURE AGREEMENT(S), OR AS OTHERWISE AUTHORIZED IN WRITING BY, OR ON BEHALF OF, DOVER FUELING SOLUTIONS UK LTD. AND/OR ITS AFFILIATE(S). ALL RIGHTS RESERVED."

APPROVED BY	04	2024-06-13	WU027290-0001
Ivens Leal	REV	DATE	ECN NO.
DRAWN BY			
Leonardo Braga			

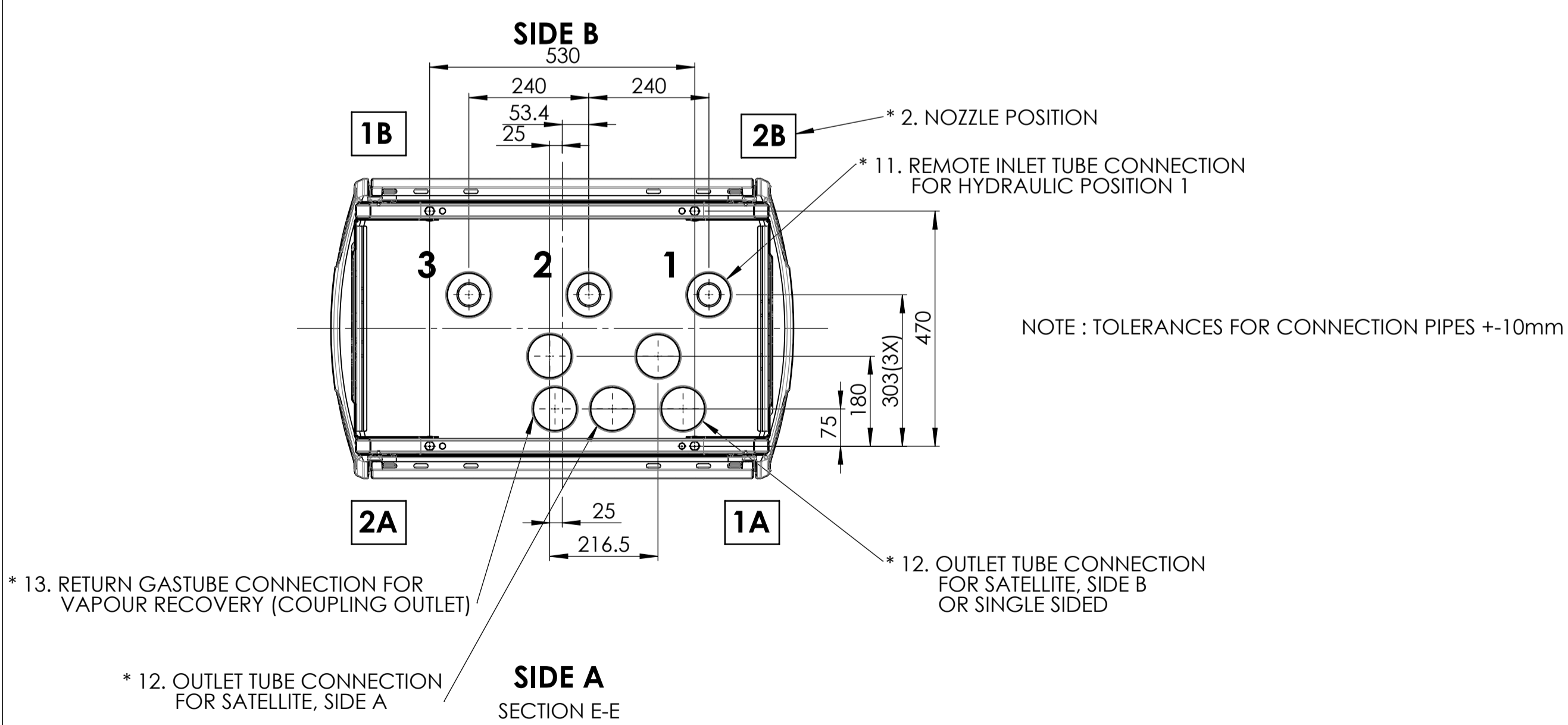
MATERIAL	DEBURR AND BREAK SHARP EDGES	SCALE	DO NOT SCALE DRAWING		Related Drawing DRAWING NO. WM047458 SHEET 3 OF 5
THICKNESS		1:9			
SURFACE TREATMENT	TITLE				
SURFACE FINISH	INSTALLATION INSTRUCTION				
GENERAL TOLERANCE	HELIX 4000, IEC, REMOTE				
REPLACED BY					

REMOTE LATAM

* 21. THIS INSTRUCTION IS VALID FOR HELIX 4000 REMOTE MODELS
ACCORDING TO DOCUMENT (HYDRAULIC CONFIGURATIONS WM042531)



Model	Flow Rates L/min	Equip. Sides	Nozzle Position	Hydraulic
H(N/LU) 11-11R	40/40	Both	1A + 1B	1
H(N/LU) 11-110R	40	A	1A	1
H(N/LU) 11-21R 120	120/120 (90 SIM.)	Both	1A + 1B	1 + 2
H(N/LU) 11-22R 120/40	120/40	Both	1A + 1B, 2A + 2B	1 + 2
H(N/LU) 11-211R 120/40	120/40	Both	1A + 1B	1 + 2
H(N/LU) 11-210R 120	120	A	1A	1 + 2
H(N/LU) 22-22R	40/40, 40/40	Both	1A + 1B, 2A + 2B	1 + 2
H(N/LU) 22-220R	40/40	A	1A + 2A	1 + 2
H(N/LU) 22-22RU	40/40, 40/40	Both	1A + 1B, 2A + 2B	1 + 2



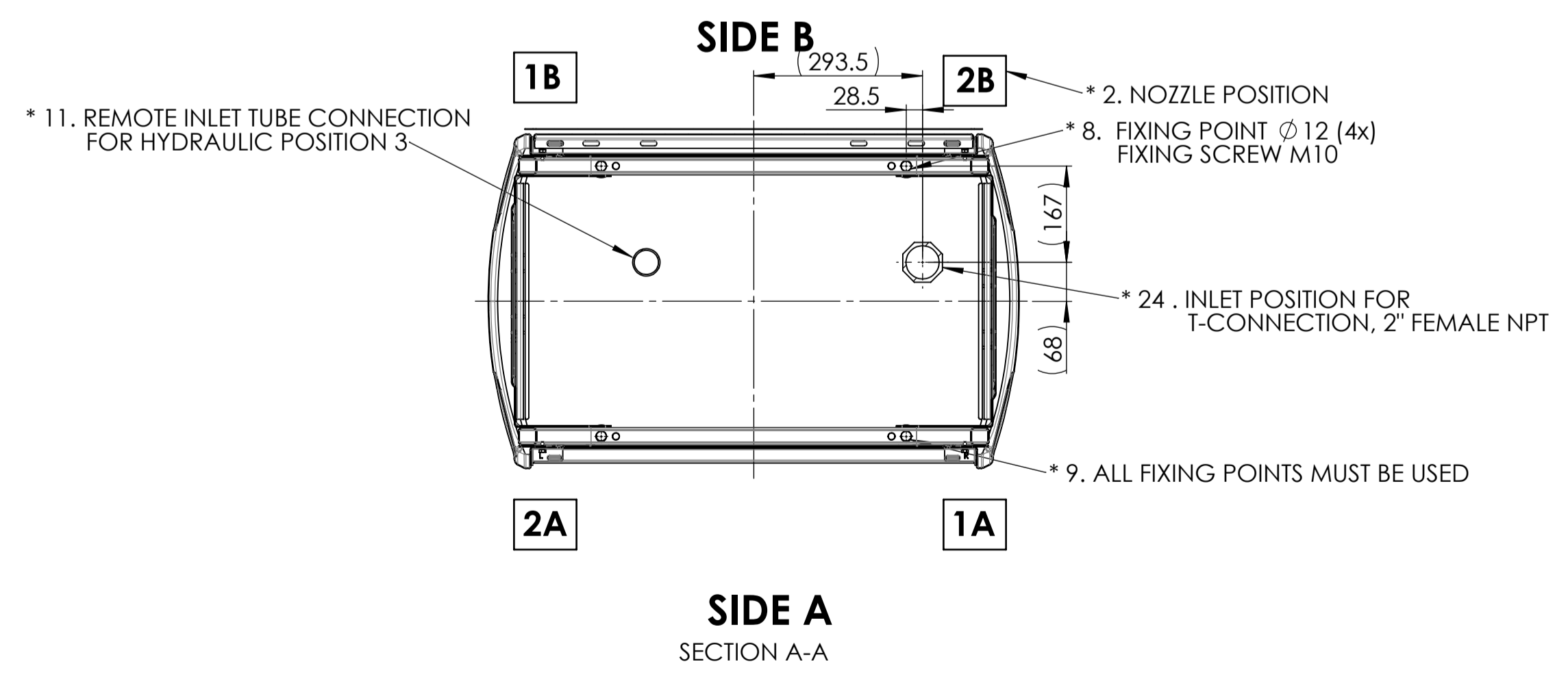
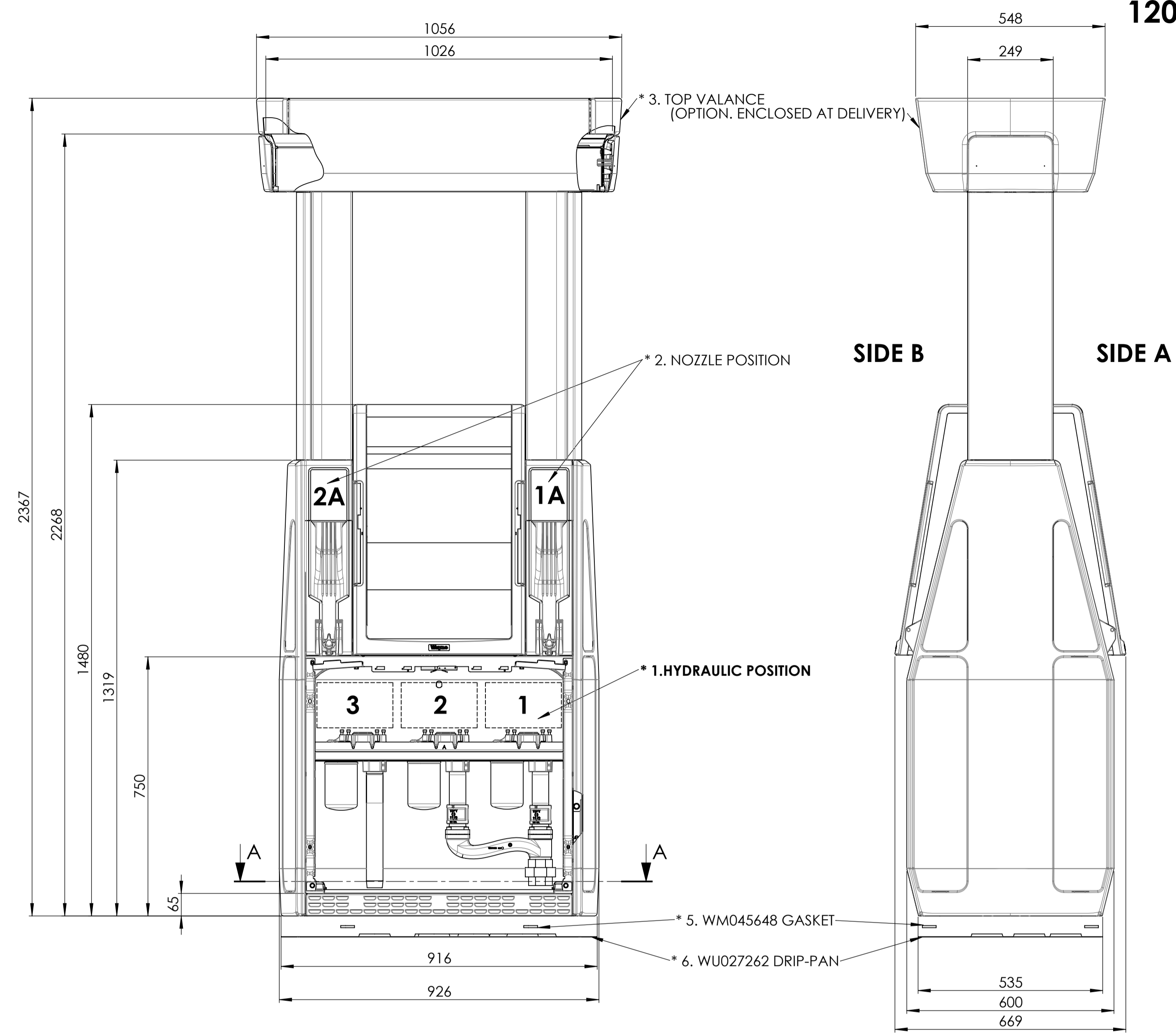
UNLESS NOTED OTHERWISE, DIMENSIONS ARE IN mm

"DOVER FUELING SOLUTIONS CONFIDENTIAL INFORMATION, SUBJECT TO NDA. THE DRAWINGS, TECHNICAL DATA, AND ALL OTHER INFORMATION SET FORTH IN THIS DOCUMENT COMPRISE TRADE SECRETS AND/OR OTHER CONFIDENTIAL INFORMATION THAT IS THE PROPERTY OF DOVER FUELING SOLUTIONS UK LTD. AND/OR ITS AFFILIATE(S) AND MAY BE SUBJECT TO COPYRIGHT OR OTHER PROTECTION. ACCESS TO AND/OR USE OF SUCH CONFIDENTIAL INFORMATION IS STRICTLY CONTROLLED AND LIMITED TO THE PURPOSE(S) FOR WHICH IT IS OR WAS PROVIDED, AND NO RECIPIENT IS PERMITTED TO USE, COPY, OR OTHERWISE DISCLOSE OR TRANSMIT SUCH INFORMATION, EXCEPT AS EXPRESSLY SET FORTH IN THE APPLICABLE NON-DISCLOSURE AGREEMENT(S), OR AS OTHERWISE AUTHORIZED IN WRITING BY, OR ON BEHALF OF, DOVER FUELING SOLUTIONS UK LTD. AND/OR ITS AFFILIATE(S). ALL RIGHTS RESERVED."

APPROVED BY Ivens Leal	04	2024-06-13	wu027290-0001
DRAWN BY Leonardo Braga	REV	DATE	ECN NO.

MATERIAL	DEBURR AND BREAK SHARP EDGES	SCALE 1:9	DO NOT SCALE DRAWING		Related Drawing
THICKNESS	SURFACE TREATMENT	TITLE INSTALLATION INSTRUCTION			DRAWING NO. WM047458
SURFACE FINISH	GENERAL TOLERANCE	HELIX 4000, IEC, REMOTE			SHEET 4 OF 5
REPLACED BY					A1

120 LPM WITH T-CONNECTION INLET LATAM



* 16. THE HOLLOW SPACE UNDER THE PUMP IS TO BE FILLED WITH FINE COARSE SAND 0-8 OR LECA-PELLETS 2-4.
 * 21. THIS INSTRUCTION IS VALID FOR THE PUMP MODEL HELIX 4000 REMOTE

UNLESS NOTED OTHERWISE, DIMENSIONS ARE IN mm

“DOVER FUELING SOLUTIONS CONFIDENTIAL INFORMATION, SUBJECT TO NDA. THE DRAWINGS, TECHNICAL DATA, AND ALL OTHER INFORMATION SET FORTH IN THIS DOCUMENT COMPRISE TRADE SECRETS AND/OR OTHER CONFIDENTIAL INFORMATION THAT IS THE PROPERTY OF DOVER FUELING SOLUTIONS UK LTD. AND/OR ITS AFFILIATE(S) AND MAY BE SUBJECT TO COPYRIGHT OR OTHER PROTECTION. ACCESS TO AND/OR USE OF SUCH CONFIDENTIAL INFORMATION IS STRICTLY CONTROLLED AND LIMITED TO THE PURPOSE(S) FOR WHICH IT IS OR WAS PROVIDED, AND NO RECIPIENT IS PERMITTED TO USE, COPY, OR OTHERWISE DISCLOSE OR TRANSMIT SUCH INFORMATION, EXCEPT AS EXPRESSLY SET FORTH IN THE APPLICABLE NON-DISCLOSURE AGREEMENT(S), OR AS OTHERWISE AUTHORIZED IN WRITING BY, OR ON BEHALF OF, DOVER FUELING SOLUTIONS UK LTD. AND/OR ITS AFFILIATE(S). ALL RIGHTS RESERVED.”

APPROVED BY Ivens Leal	04	2024-06-13	WU027290-0001
DRAWN BY Leonardo Braga	REV	DATE	ECN NO.

MATERIAL	DEBURR AND BREAK SHARP EDGES	SCALE 1:9	DO NOT SCALE DRAWING		Related Drawing
THICKNESS	SURFACE TREATMENT	TITLE INSTALLATION INSTRUCTION			DRAWING NO. WM047458
GENERAL TOLERANCE	REPLACED BY	HELIX 4000, IEC, REMOTE		SHEET 5 OF 5	A1