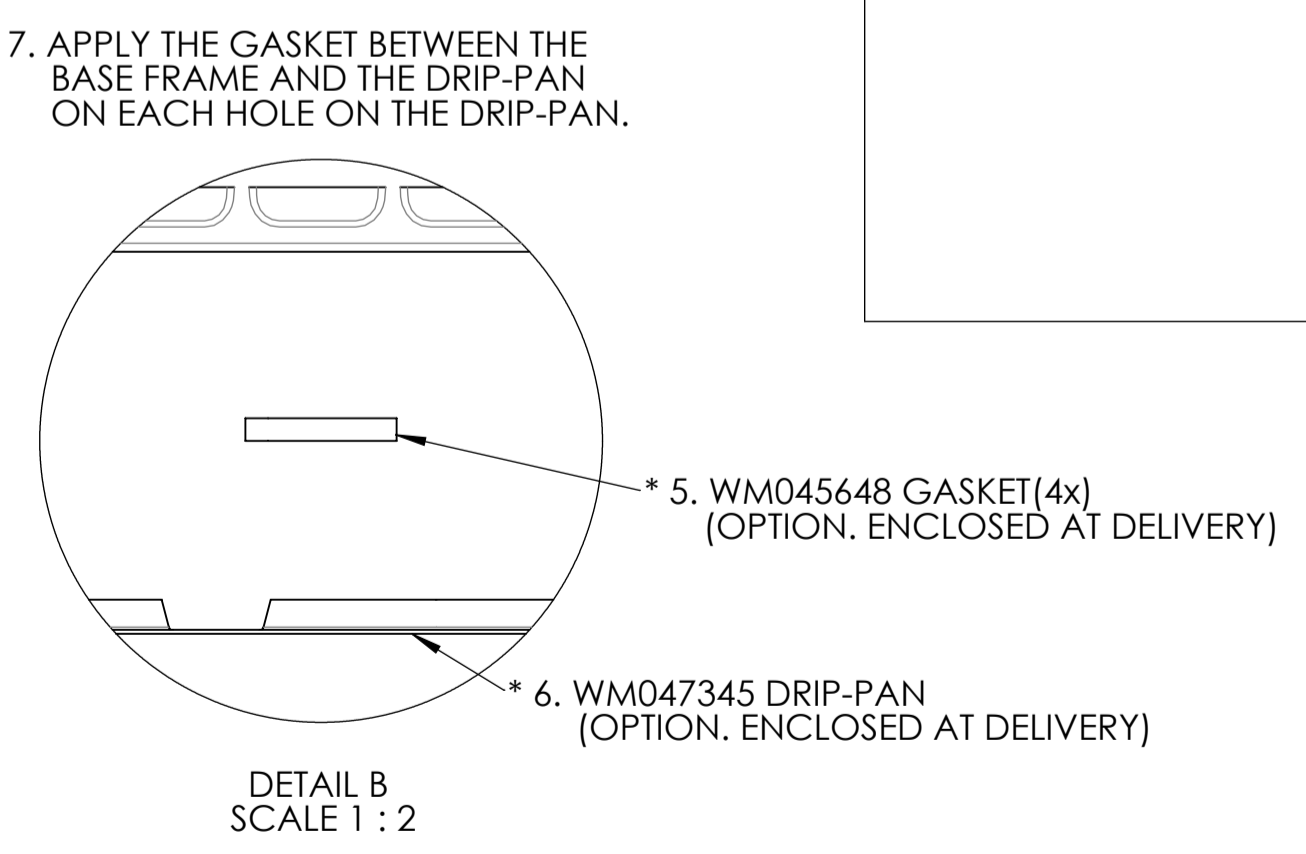
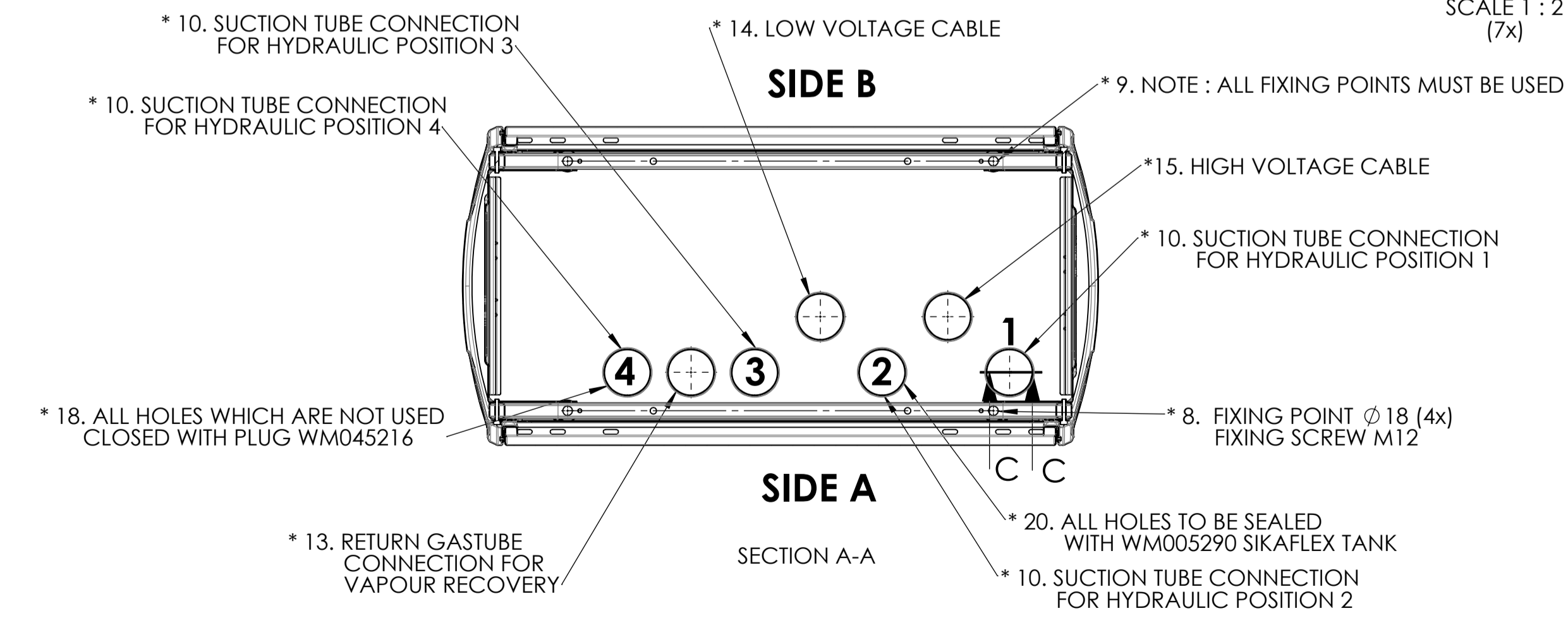
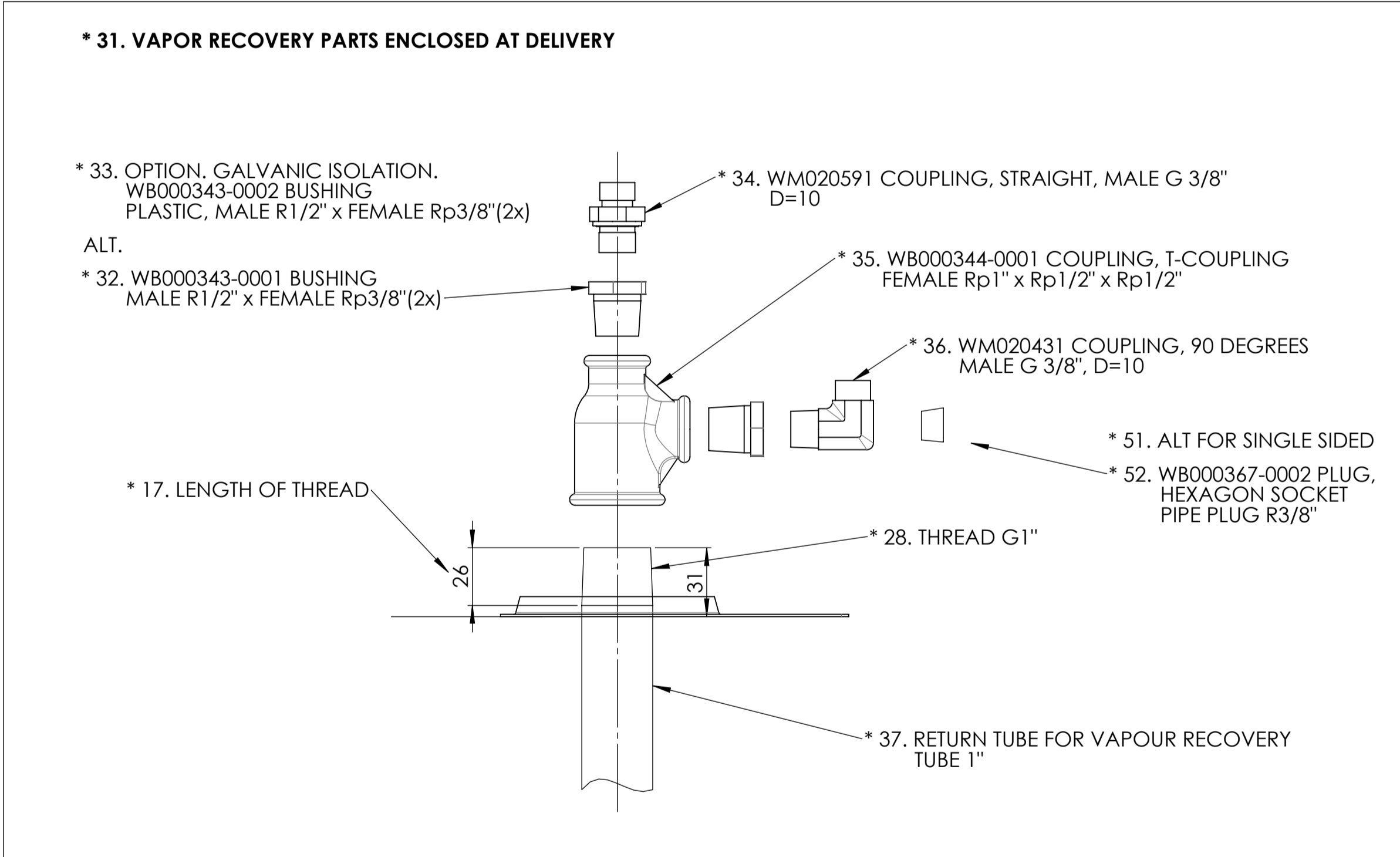
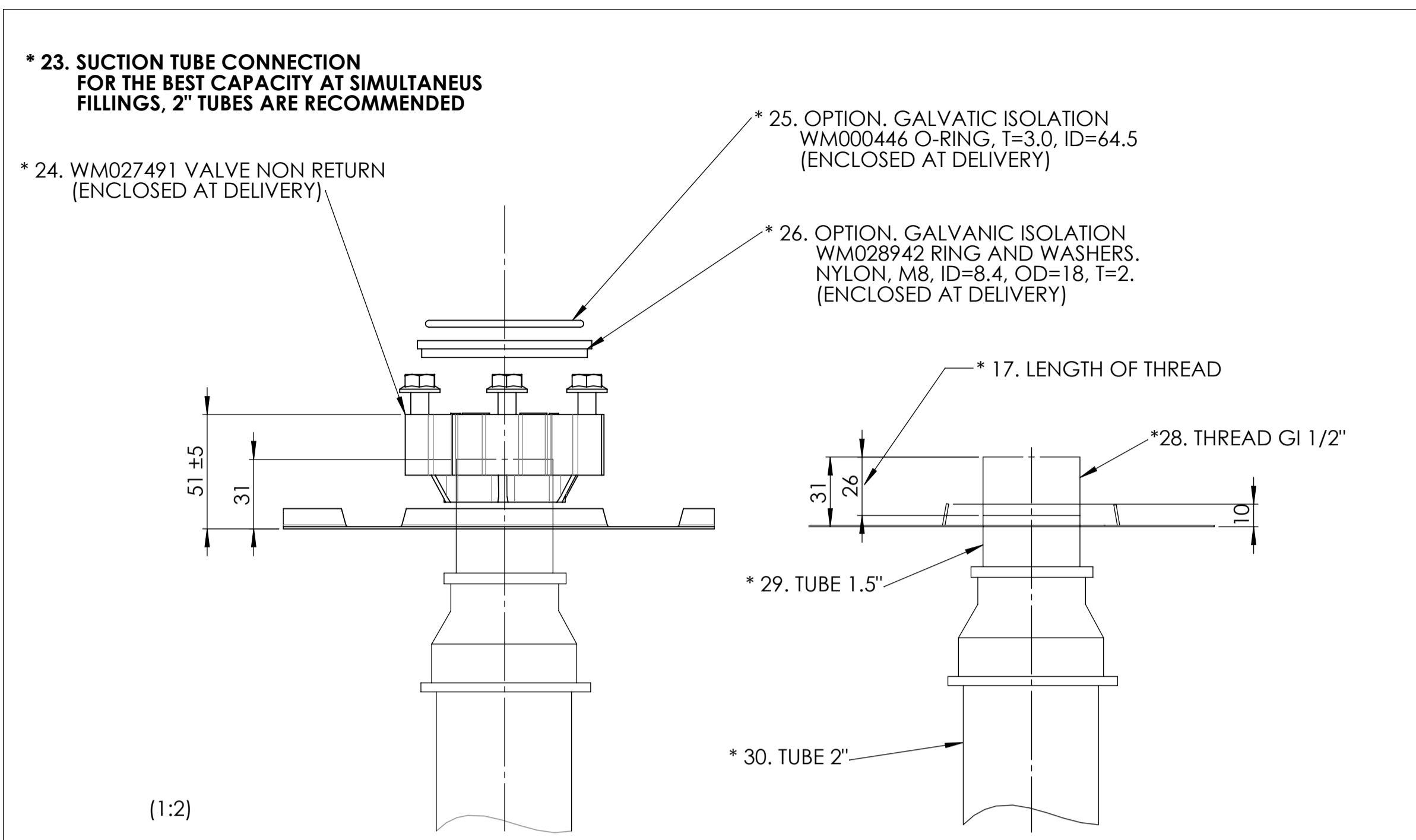
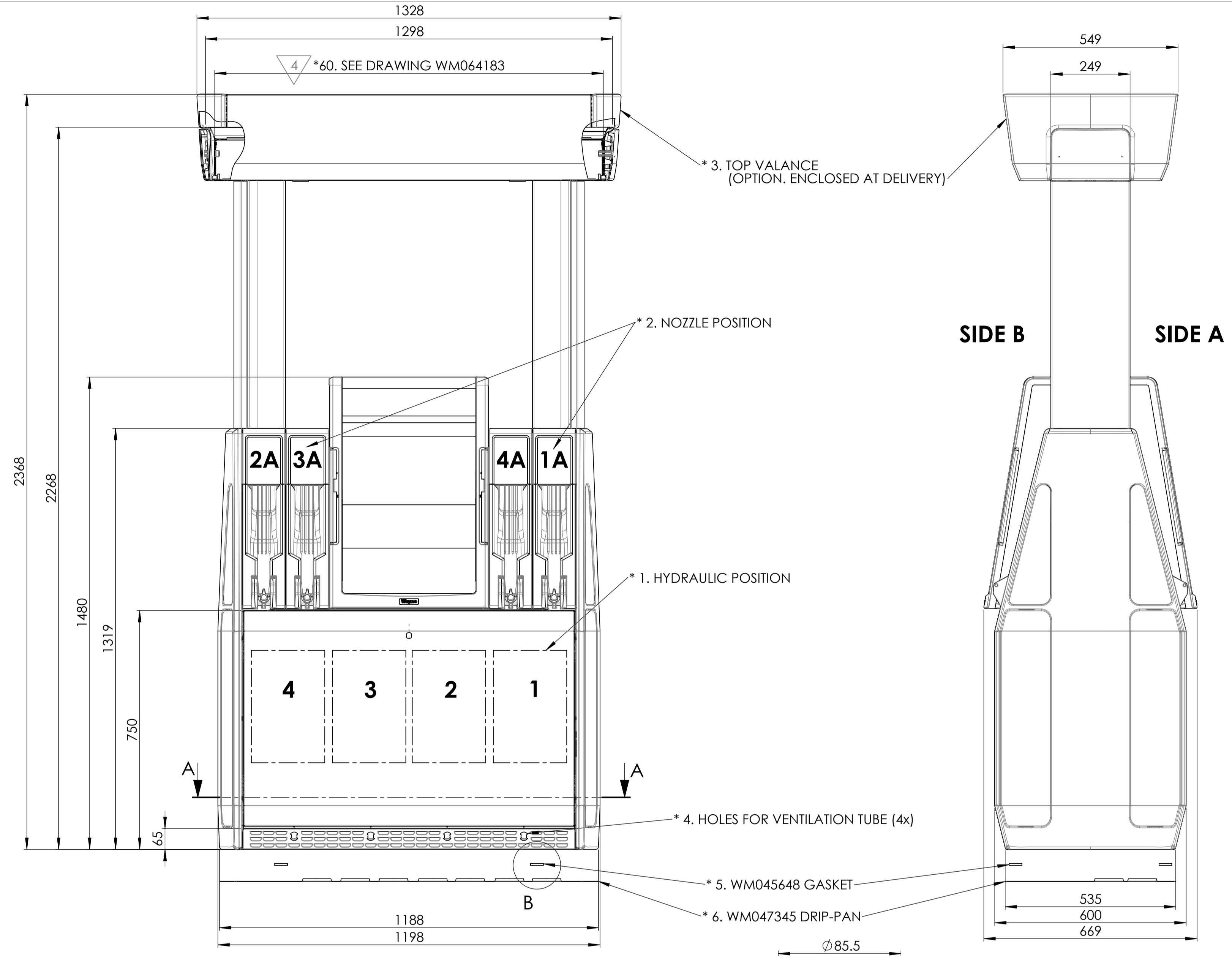


DESCRIPTION OF CHANGE
 NEW MEASUREMENT/NOTE ADDED FOR TOP BOX. ADDED SHEET 4,5 AND 6 FOR SUCTION LATAM.



PAGE	MANUFACTURE SITE	IMPLEMENTATION DATE
1,2,3	MALMO, DUNDEE, BRAZIL	N/A
4,5,6	BRAZIL (ONLY 3-PHASE MOTORS)	FROM 2024 JUNE

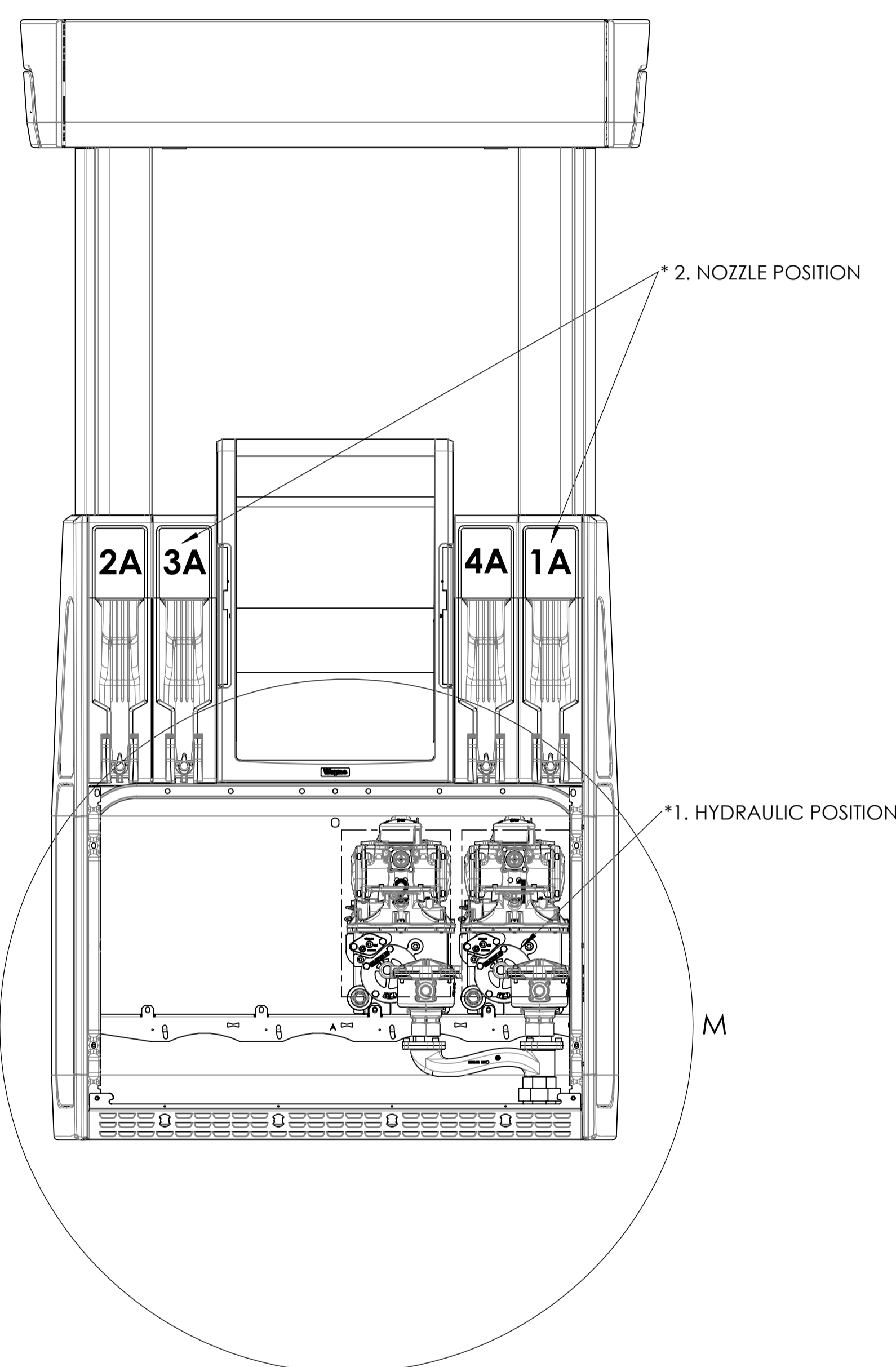
* 16. THE HOLLOW SPACE UNDER THE PUMP IS TO BE FILLED WITH FINE COARSE SAND 0-8 OR LECA-PELLETS 2-4.
 * 21. THIS INSTRUCTION IS VALID FOR THE PUMP MODEL HELIX 5000 SUCTION

“DOVER FUELING SOLUTIONS CONFIDENTIAL INFORMATION, SUBJECT TO NDA. THE DRAWINGS, TECHNICAL DATA, AND ALL OTHER INFORMATION SET FORTH IN THIS DOCUMENT COMPRISE TRADE SECRETS AND/OR OTHER CONFIDENTIAL INFORMATION THAT IS THE PROPERTY OF DOVER FUELING SOLUTIONS UK LTD. AND/OR ITS AFFILIATE(S) AND MAY BE SUBJECT TO COPYRIGHT OR OTHER PROTECTION. ACCESS TO AND/OR USE OF SUCH CONFIDENTIAL INFORMATION IS STRICTLY CONTROLLED AND LIMITED TO THE PURPOSE(S) FOR WHICH IT IS OR WAS PROVIDED, AND NO RECIPIENT IS PERMITTED TO USE, COPY, OR OTHERWISE DISCLOSE OR TRANSMIT SUCH INFORMATION, EXCEPT AS EXPRESSLY SET FORTH IN THE APPLICABLE NON-DISCLOSURE AGREEMENT(S), OR AS OTHERWISE AUTHORIZED IN WRITING BY, OR ON BEHALF OF, DOVER FUELING SOLUTIONS UK LTD. AND/OR ITS AFFILIATE(S). ALL RIGHTS RESERVED.”

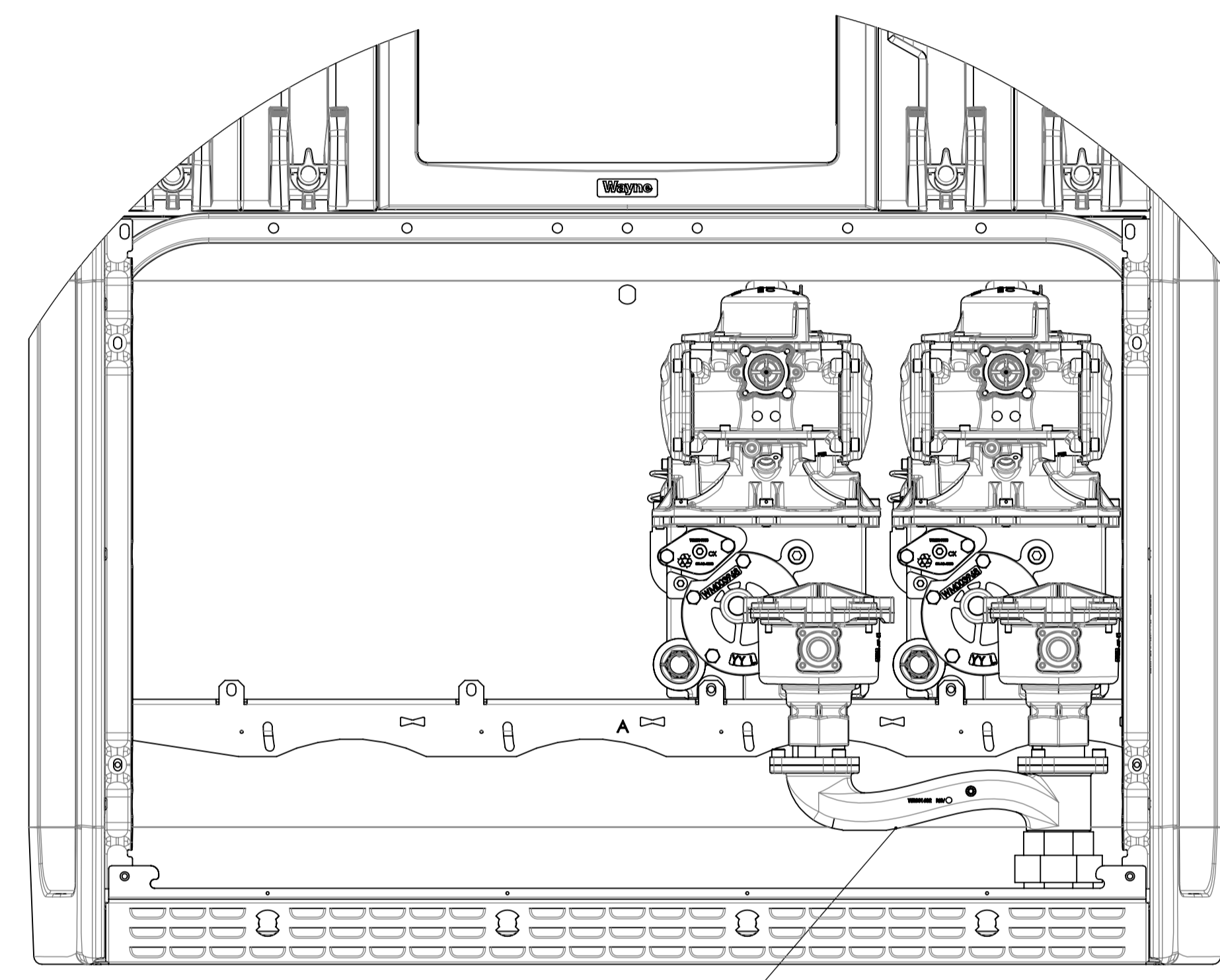
APPROVED BY Ivens Leal	04	2024-06-17	wu027308-0001
DRAWN BY Leonardo Braga	REV	DATE	ECN NO.

UNLESS NOTED OTHERWISE, DIMENSIONS ARE IN mm

MATERIAL	DEBURR AND BREAK SHARP EDGES	SCALE 1:9	DO NOT SCALE DRAWING		Related Drawing
THICKNESS					
SURFACE TREATMENT					
SURFACE FINISH					
GENERAL TOLERANCE					
REPLACED BY					
TITLE INSTALLATION INSTRUCTION HELIX 5000, IEC, SUCTION					DRAWING NO. WM047457 SHEET 1 OF 6



***85 T CONNECTOR NO SHEAR**



DETAIL M
 SCALE 1 : 5

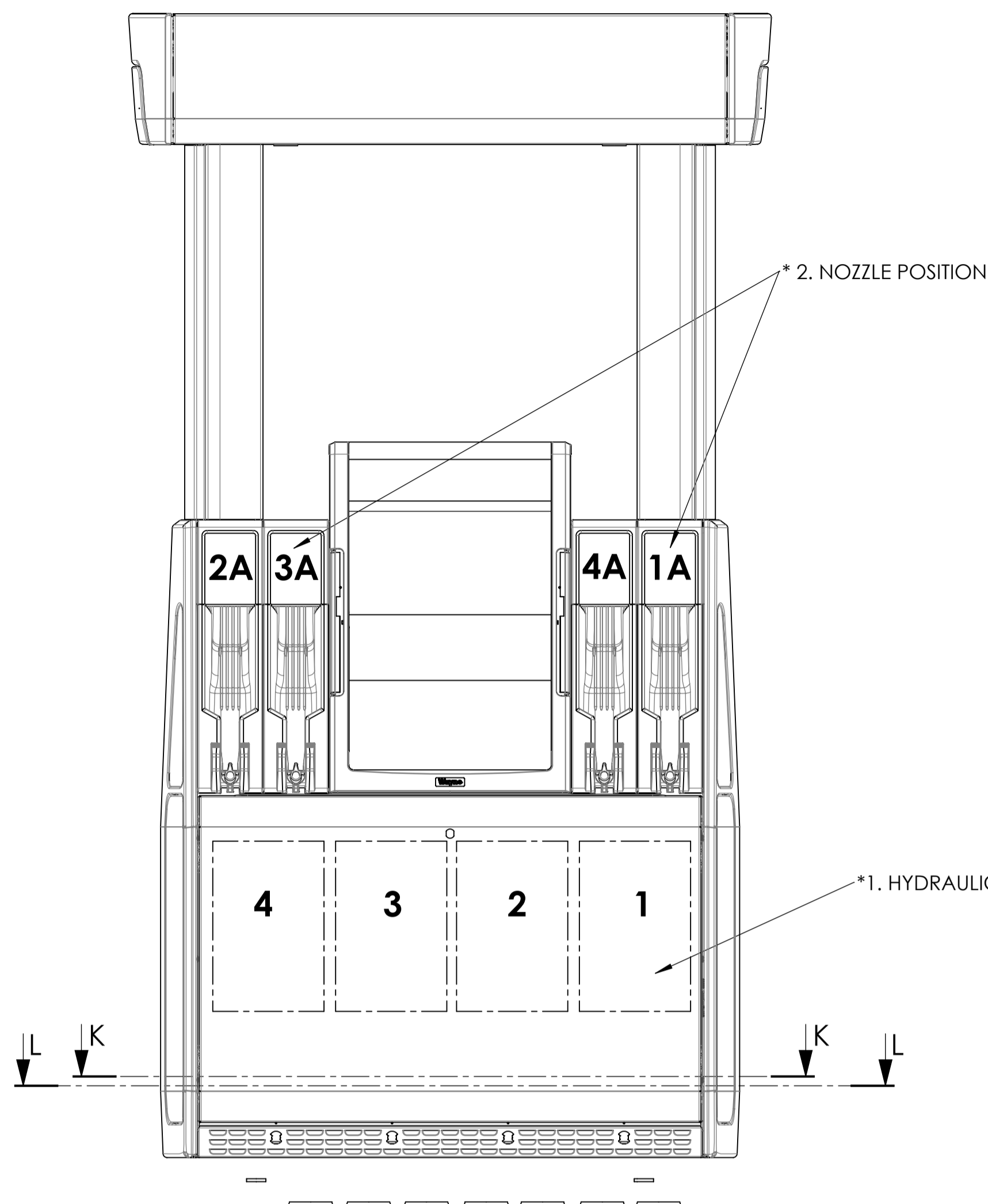
***83 NOTE:**
 1 - T CONNECTOR PARTS ENCLOSED AT DELIVERY
 2 - FOR MODELS 11-21 & 11-22 ONLY

UNLESS NOTED OTHERWISE, DIMENSIONS ARE IN mm

"DOVER FUELING SOLUTIONS CONFIDENTIAL INFORMATION, SUBJECT TO NDA. THE DRAWINGS, TECHNICAL DATA, AND ALL OTHER INFORMATION SET FORTH IN THIS DOCUMENT COMPRISE TRADE SECRETS AND/OR OTHER CONFIDENTIAL INFORMATION THAT IS THE PROPERTY OF DOVER FUELING SOLUTIONS UK LTD. AND/OR ITS AFFILIATE(S) AND MAY BE SUBJECT TO COPYRIGHT OR OTHER PROTECTION. ACCESS TO AND/OR USE OF SUCH CONFIDENTIAL INFORMATION IS STRICTLY CONTROLLED AND LIMITED TO THE PURPOSE(S) FOR WHICH IT IS OR WAS PROVIDED, AND NO RECIPIENT IS PERMITTED TO USE, COPY, OR OTHERWISE DISCLOSE OR TRANSMIT SUCH INFORMATION, EXCEPT AS EXPRESSLY SET FORTH IN THE APPLICABLE NON-DISCLOSURE AGREEMENT(S), OR AS OTHERWISE AUTHORIZED IN WRITING BY, OR ON BEHALF OF, DOVER FUELING SOLUTIONS UK LTD. AND/OR ITS AFFILIATE(S). ALL RIGHTS RESERVED."

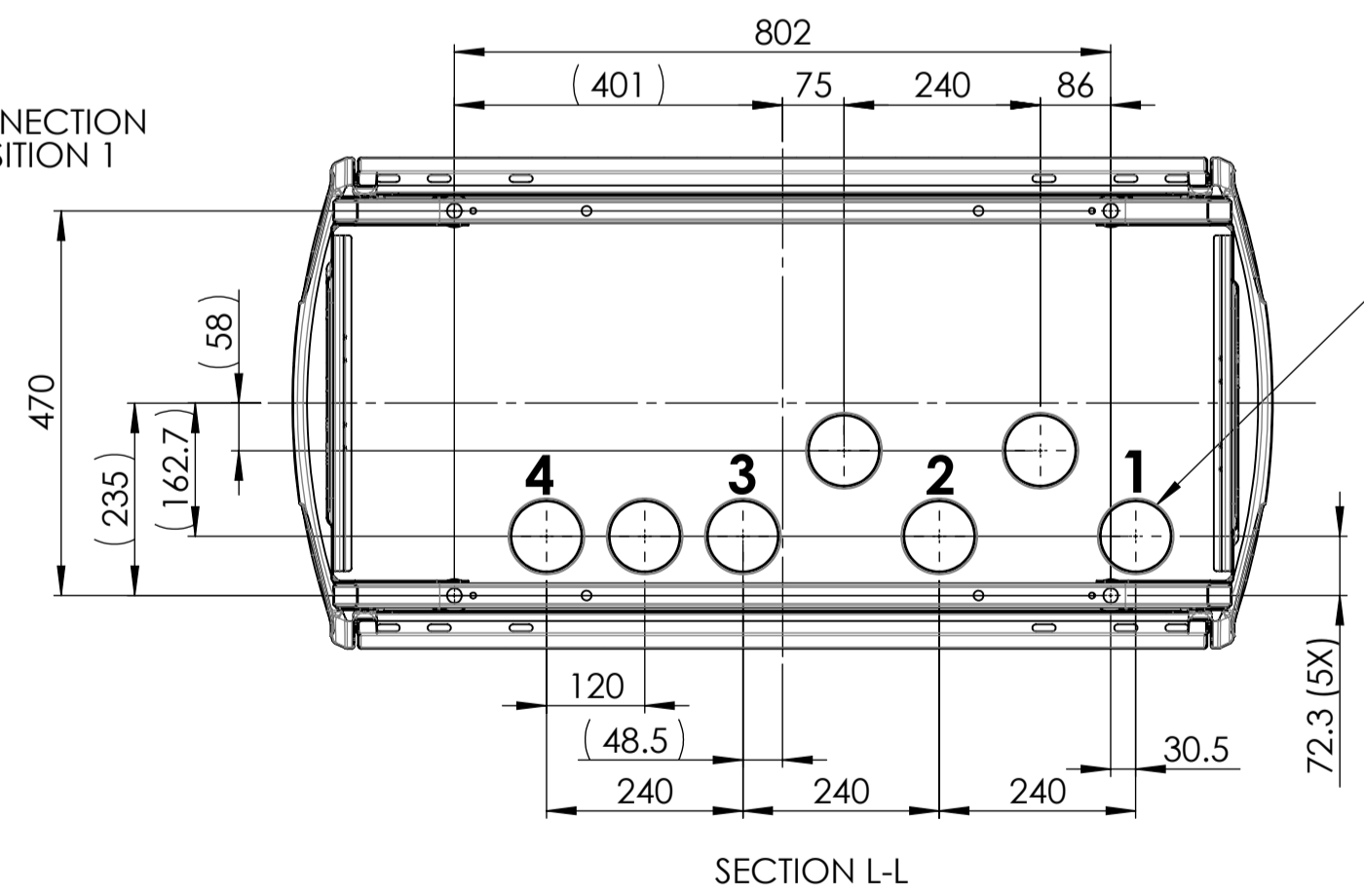
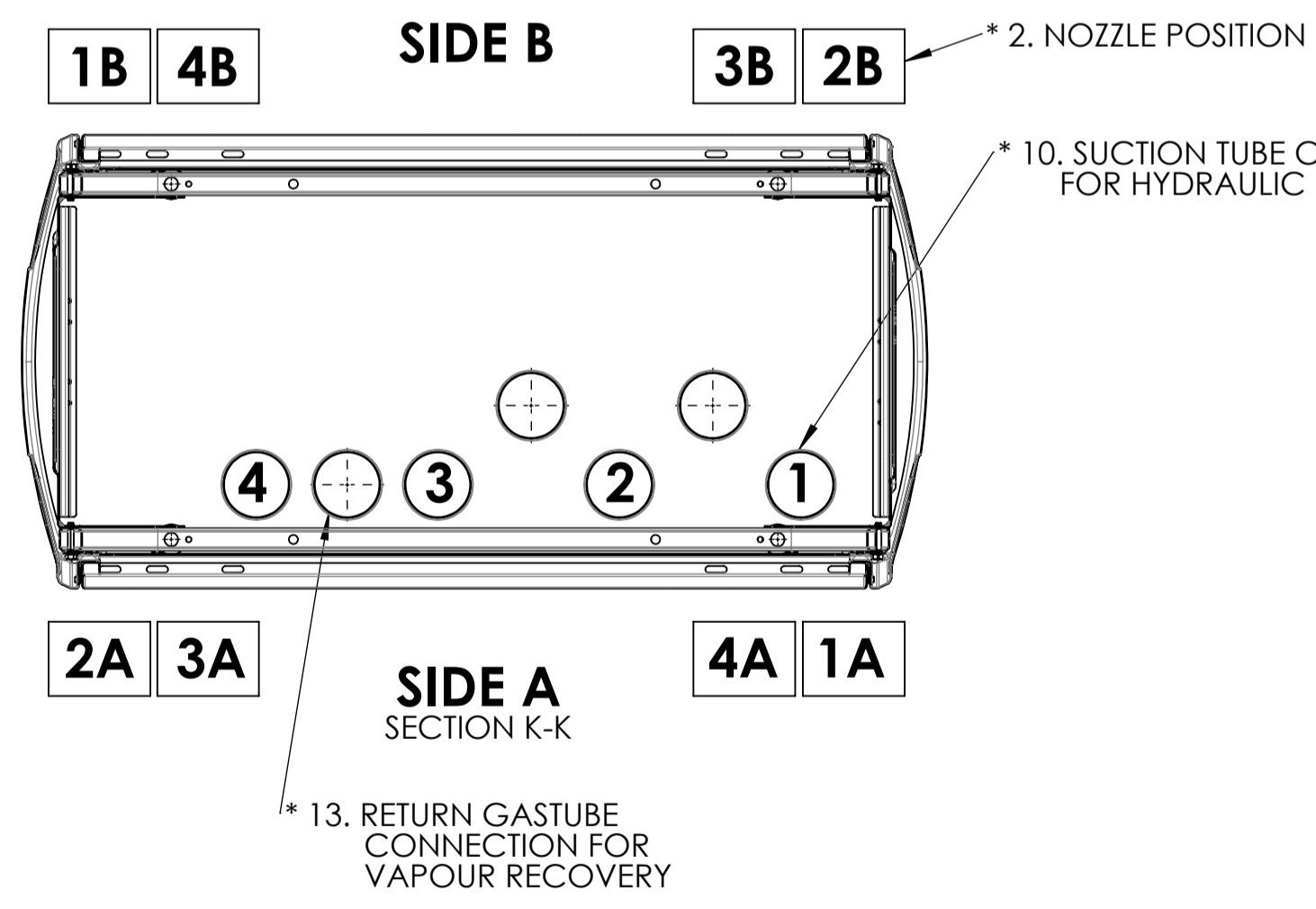
APPROVED BY Ivens Leal	04	2024-06-17	wu027308-0001
DRAWN BY Leonardo Braga	REV	DATE	ECN NO.

MATERIAL	DEBURR AND BREAK SHARP EDGES	SCALE 1:9	DO NOT SCALE DRAWING		Related Drawing
THICKNESS	SURFACE TREATMENT	TITLE INSTALLATION INSTRUCTION			DRAWING NO. WM047457
SURFACE FINISH	GENERAL TOLERANCE	HELIX 5000, IEC, SUCTION			SHEET 2 OF 6
REPLACED BY					A1



* 21. THIS INSTRUCTION IS VALID FOR HELIX 5000 SUCTION MODELS ACCORDING TO DOCUMENT (HYDRAULIC CONFIGURATIONS WM042531)

Model	Flow Rates L/min	Equip. Sides	Nozzle Position	Hydraulic
H(W/LU) 11-11R	40/40	Both	1A + 1B	1
H(W/LU) 11-110R	40	A	1A	1
H(W/LU) 11-21H	40/120	Both	1A + 1B	1 + 2
H(W/LU) 11-211H	120/40	Both	1A + 1B	1 + 2
H(W/LU) 11-22	120/40	Both	1A + 1B, 2A + 2B	1 + 2
H(W/LU) 11-31	120/40	Both	1A + 1B	1 + 2 + 3
H(W/LU) 22-22R	40/40, 40/40	Both	1A + 1B, 2A + 2B	1 + 2
H(W/LU) 22-220R	40/40	A	1A + 2A	1 + 2
H(W/LU) 22-32R 120/40	120/40 (90 SIM.) 120/40	Both	1A + 1B, 2A + 2B	1 + 2 + 3
H(W/LU) 33-33R	40/40/40, 40/40/40	Both	1A + 1B, 2A + 2B, 4A + 4B	1 + 2 + 3
H(W/LU) 33-330R	40/40/40	A	1A + 2A + 4A	1 + 2 + 3
H(W/LU) 33-33RU	40/40/40, 40/40/40	Both	1A + 1B, 2A + 2B, 4A + 4B	1 + 2 + 3
H(W/LU) 33-43	40/120	Both	1A + 1B, 2A + 2B, 4A + 4B	1 + 2 + 3 + 4
H(W/LU) 34-34R	40/40/40/40, 40/40/40/40	Both	1A+1B, 2A+2B, 3A+3B, 4A+4B	1 + 2 + 3
H(W/LU) 44-42R	40/40/40/40, 40/40/40/40	Both	1A + 1B, 2A + 2B	1 + 2 + 3 + 4
H(W/LU) 44-44R	40/40/40/40, 40/40/40/40	Both	1A+1B, 2A+2B, 3A+3B, 4A+4B	1 + 2 + 3 + 4
H(W/LU) 44-440R	40/40/40/40	A	1A + 2A + 3A + 4A	1 + 2 + 3 + 4
H(W/LU) 44-44RU	40/40/40/40, 40/40/40/40	Both	1A+1B, 2A+2B, 3A+3B, 4A+4B	1 + 2 + 3 + 4
H(W/LU) 45-42K	40/40/40/40, 40/40/40/40	Both	1A + 1B, 2A + 2B	1 + 2 + 3 + 4



NOTE: TOLERANCES FOR CONNECTION PIPES +/- 10mm

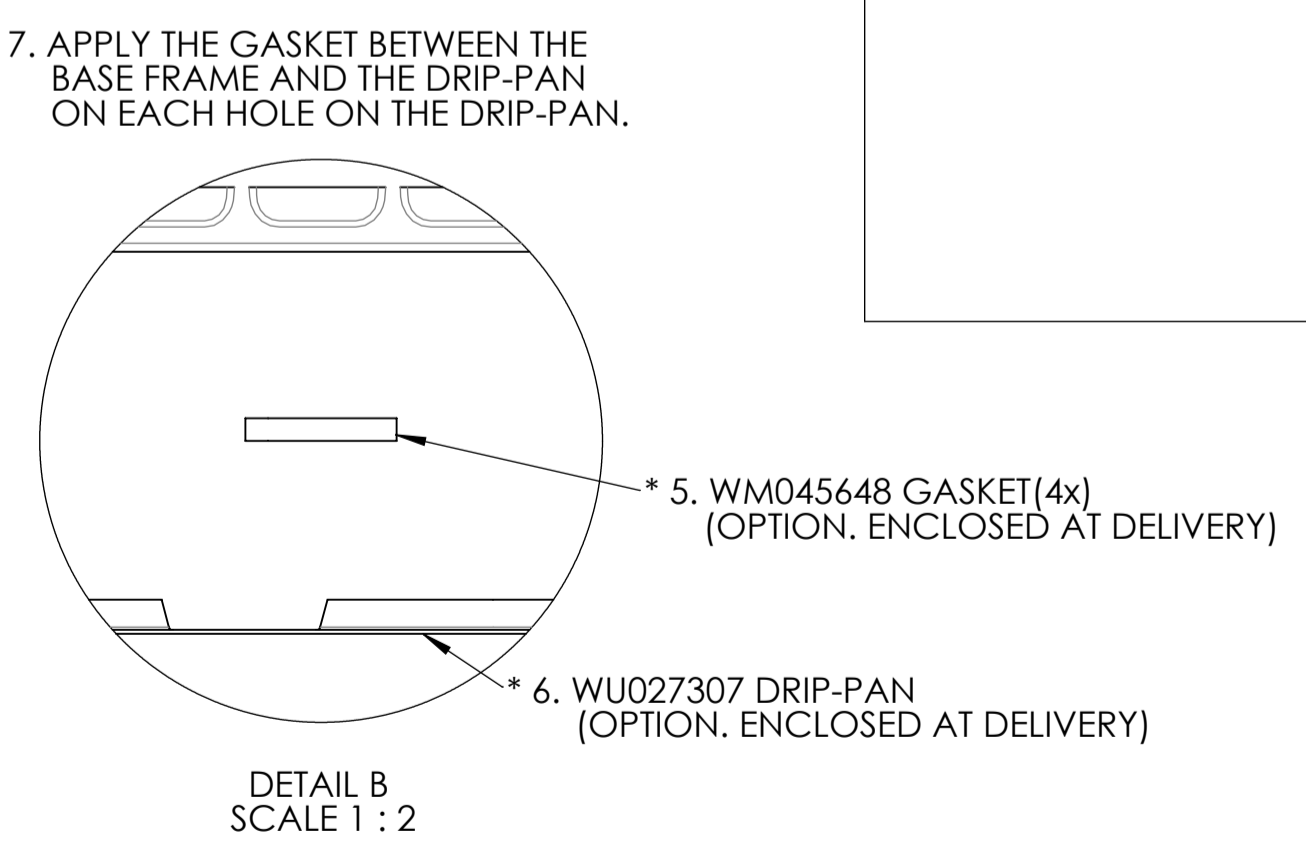
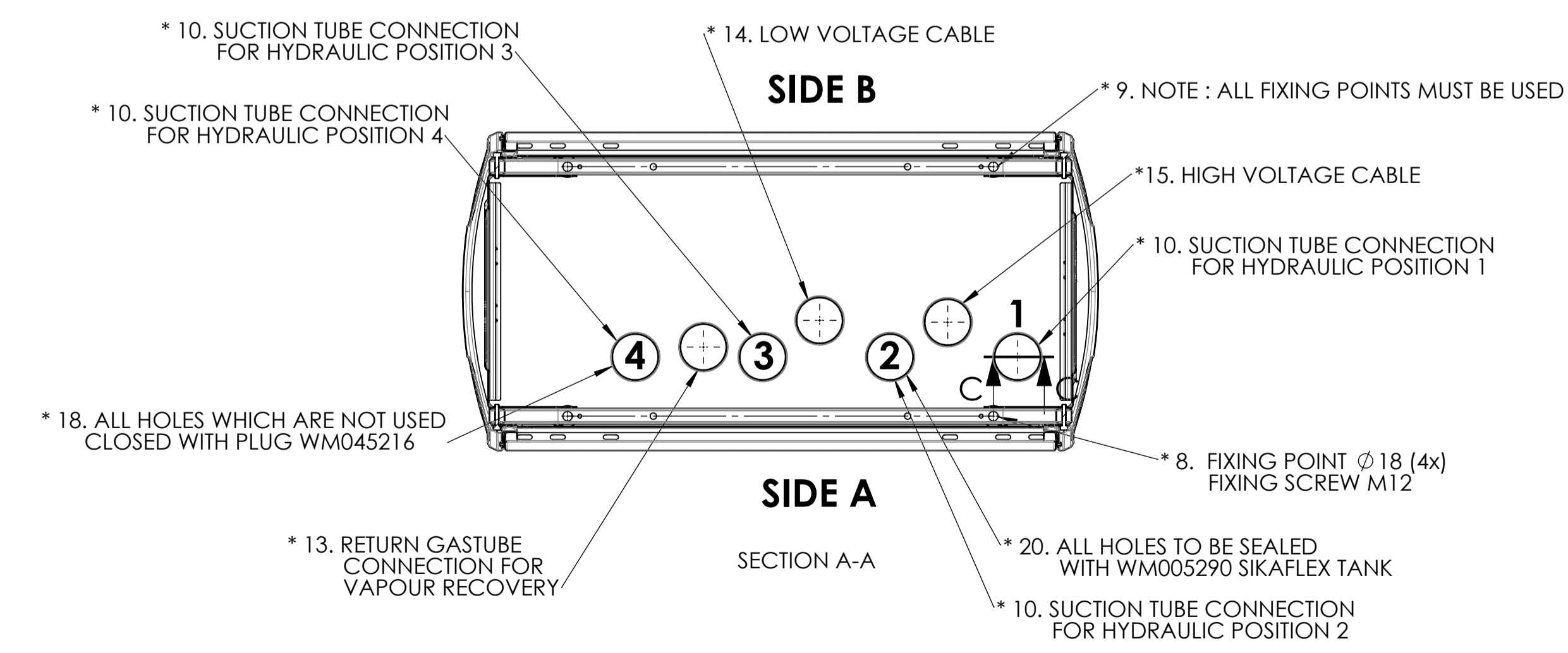
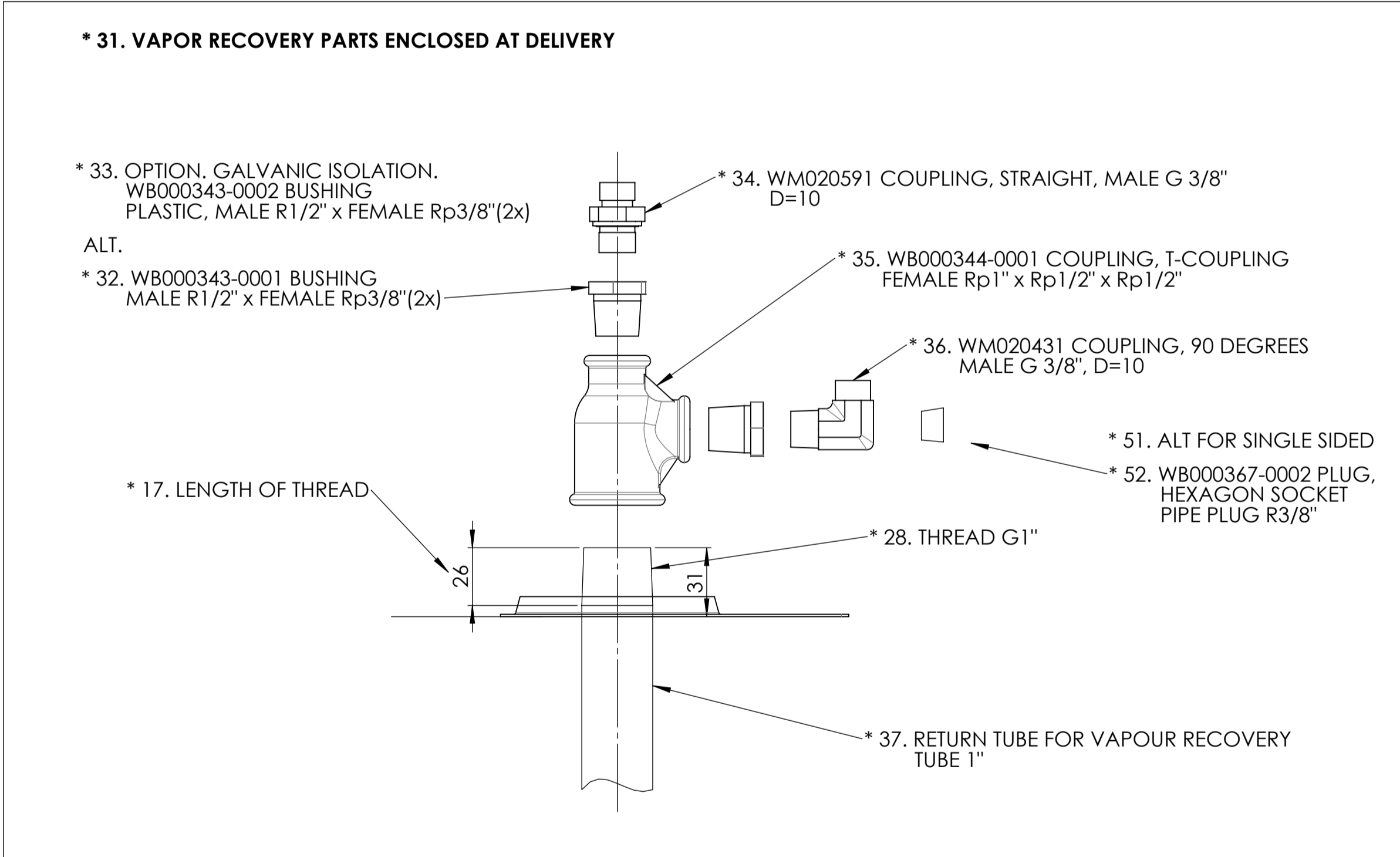
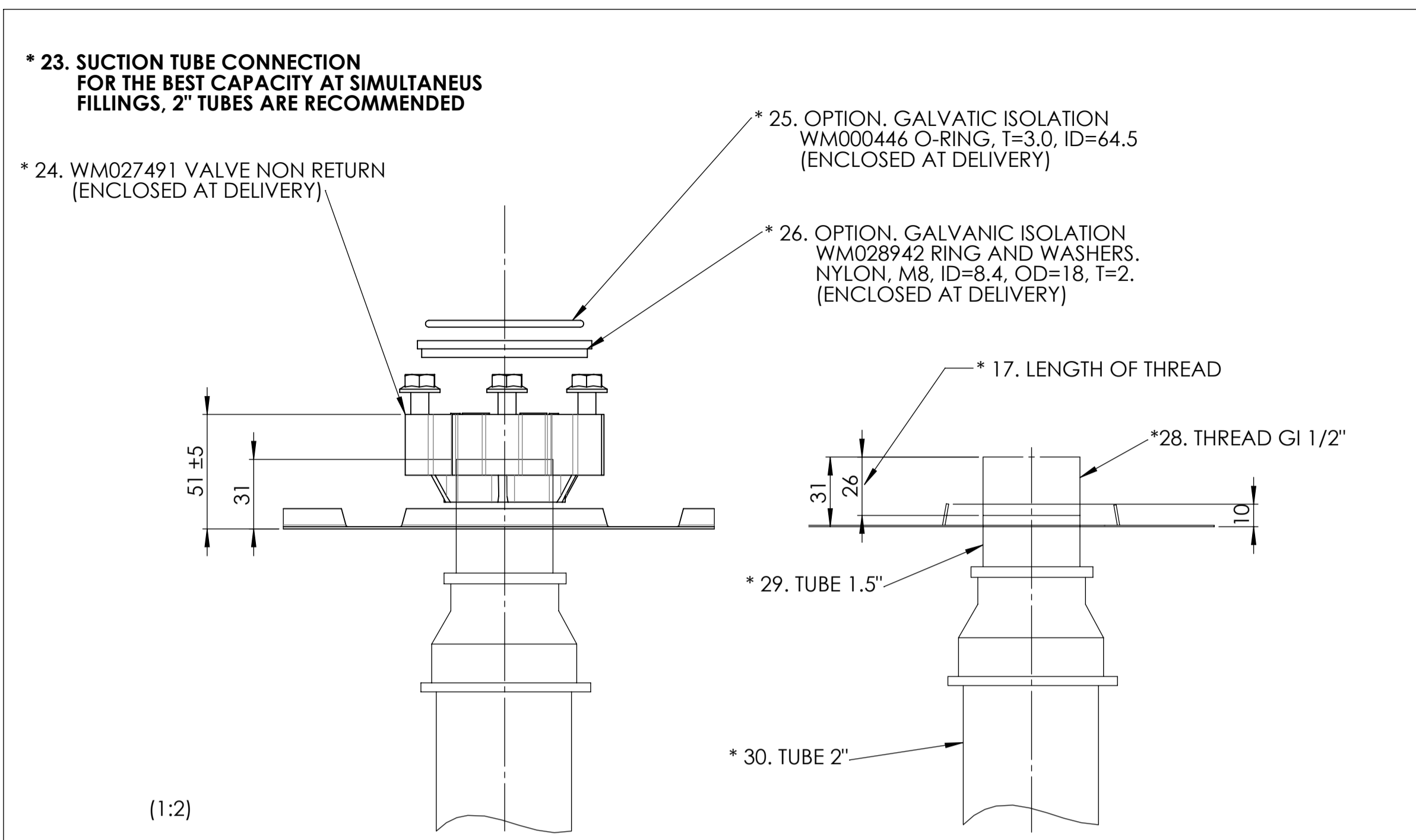
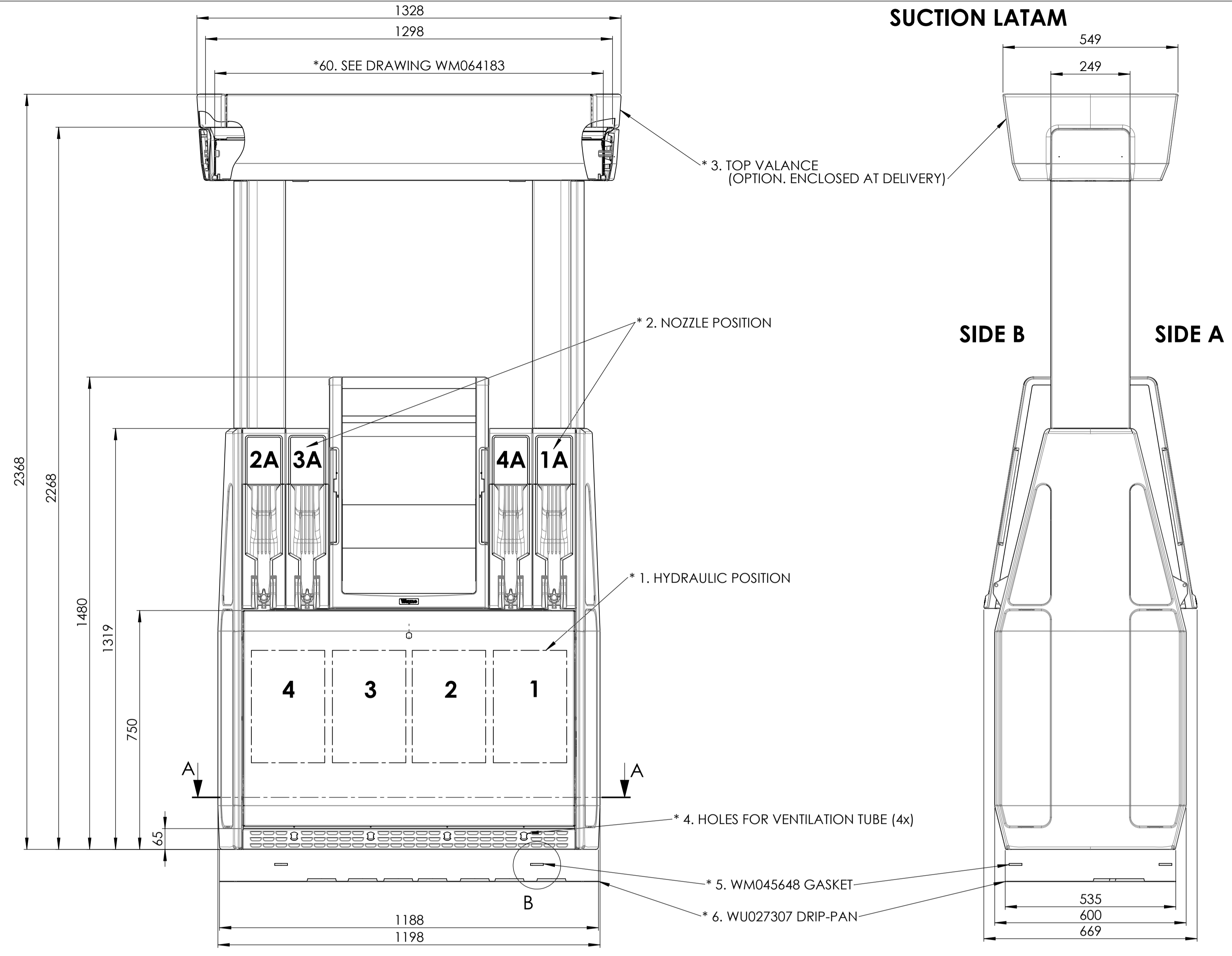
UNLESS NOTED OTHERWISE, DIMENSIONS ARE IN mm

"DOVER FUELING SOLUTIONS CONFIDENTIAL INFORMATION, SUBJECT TO NDA. THE DRAWINGS, TECHNICAL DATA, AND ALL OTHER INFORMATION SET FORTH IN THIS DOCUMENT COMPRISE TRADE SECRETS AND/OR OTHER CONFIDENTIAL INFORMATION THAT IS THE PROPERTY OF DOVER FUELING SOLUTIONS UK LTD. AND/OR ITS AFFILIATE(S) AND MAY BE SUBJECT TO COPYRIGHT OR OTHER PROTECTION. ACCESS TO AND/OR USE OF SUCH CONFIDENTIAL INFORMATION IS STRICTLY CONTROLLED AND LIMITED TO THE PURPOSE(S) FOR WHICH IT IS OR WAS PROVIDED, AND NO RECIPIENT IS PERMITTED TO USE, COPY, OR OTHERWISE DISCLOSE OR TRANSMIT SUCH INFORMATION, EXCEPT AS EXPRESSLY SET FORTH IN THE APPLICABLE NON-DISCLOSURE AGREEMENT(S), OR AS OTHERWISE AUTHORIZED IN WRITING BY, OR ON BEHALF OF, DOVER FUELING SOLUTIONS UK LTD. AND/OR ITS AFFILIATE(S). ALL RIGHTS RESERVED."

APPROVED BY Ivens Leal	04	2024-06-17	wu027308-0001
DRAWN BY Leonardo Braga	REV	DATE	ECN NO.

MATERIAL	DEBURR AND BREAK SHARP EDGES	SCALE 1:9	DO NOT SCALE DRAWING		Related Drawing
THICKNESS	SURFACE TREATMENT	TITLE INSTALLATION INSTRUCTION			DRAWING NO. WM047457
SURFACE FINISH	GENERAL TOLERANCE	HELIX 5000, IEC, SUCTION			SHEET 3 OF 6
REPLACED BY					A1

DESCRIPTION OF CHANGE
 NEW MEASUREMENT/NOTE ADDED FOR TOP BOX. ADDED SHEET 4,5 AND 6 FOR SUCTION LATAM.

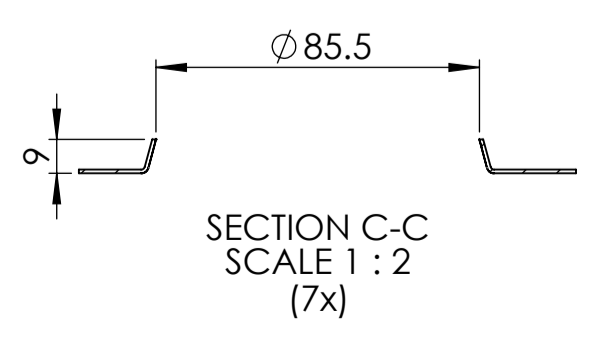


* 16. THE HOLLOW SPACE UNDER THE PUMP IS TO BE FILLED WITH FINE COARSE SAND 0-8 OR LECA-PELLETS 2-4.
 * 21. THIS INSTRUCTION IS VALID FOR THE PUMP MODEL HELIX 5000 SUCTION

UNLESS NOTED OTHERWISE, DIMENSIONS ARE IN mm

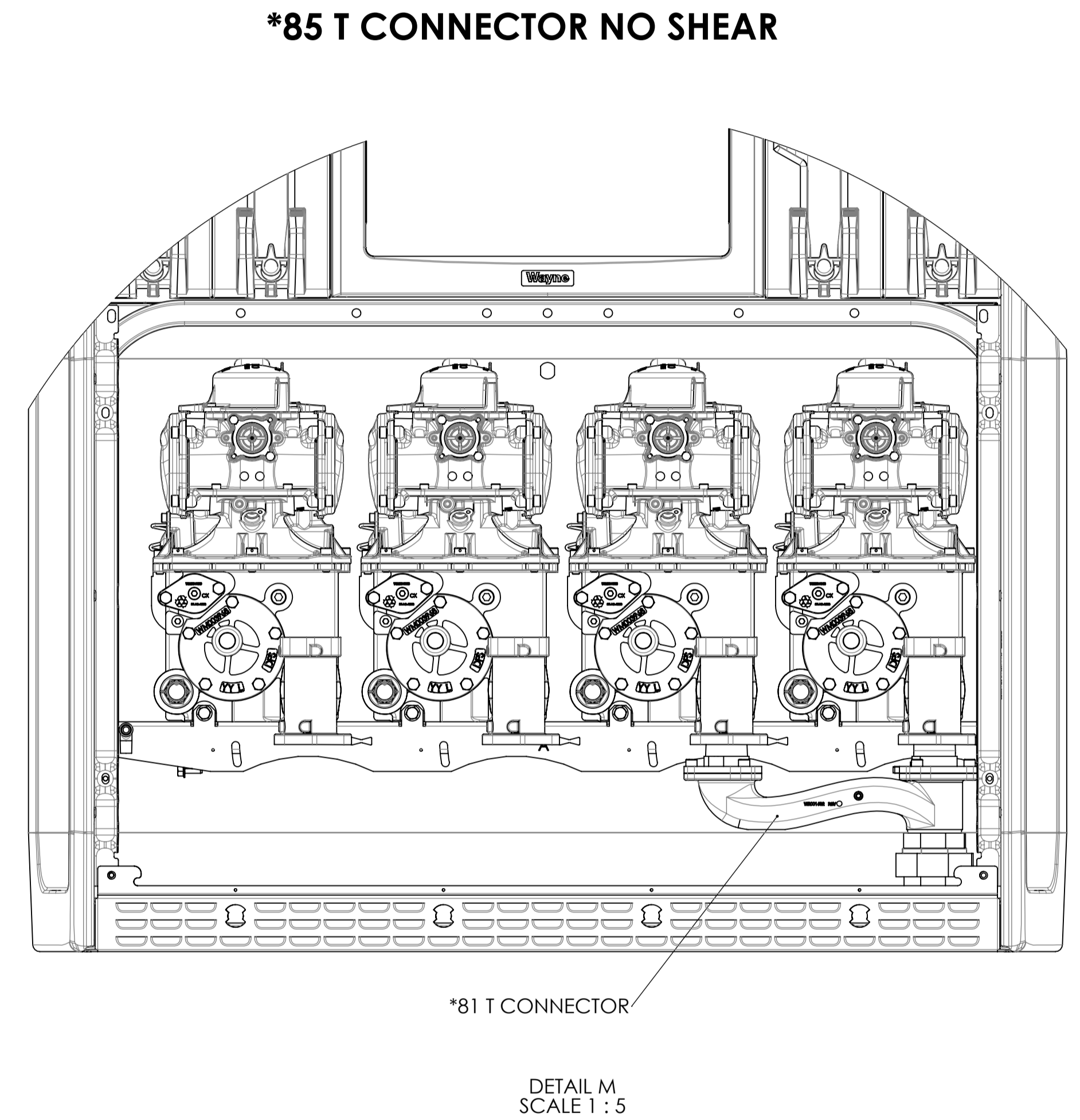
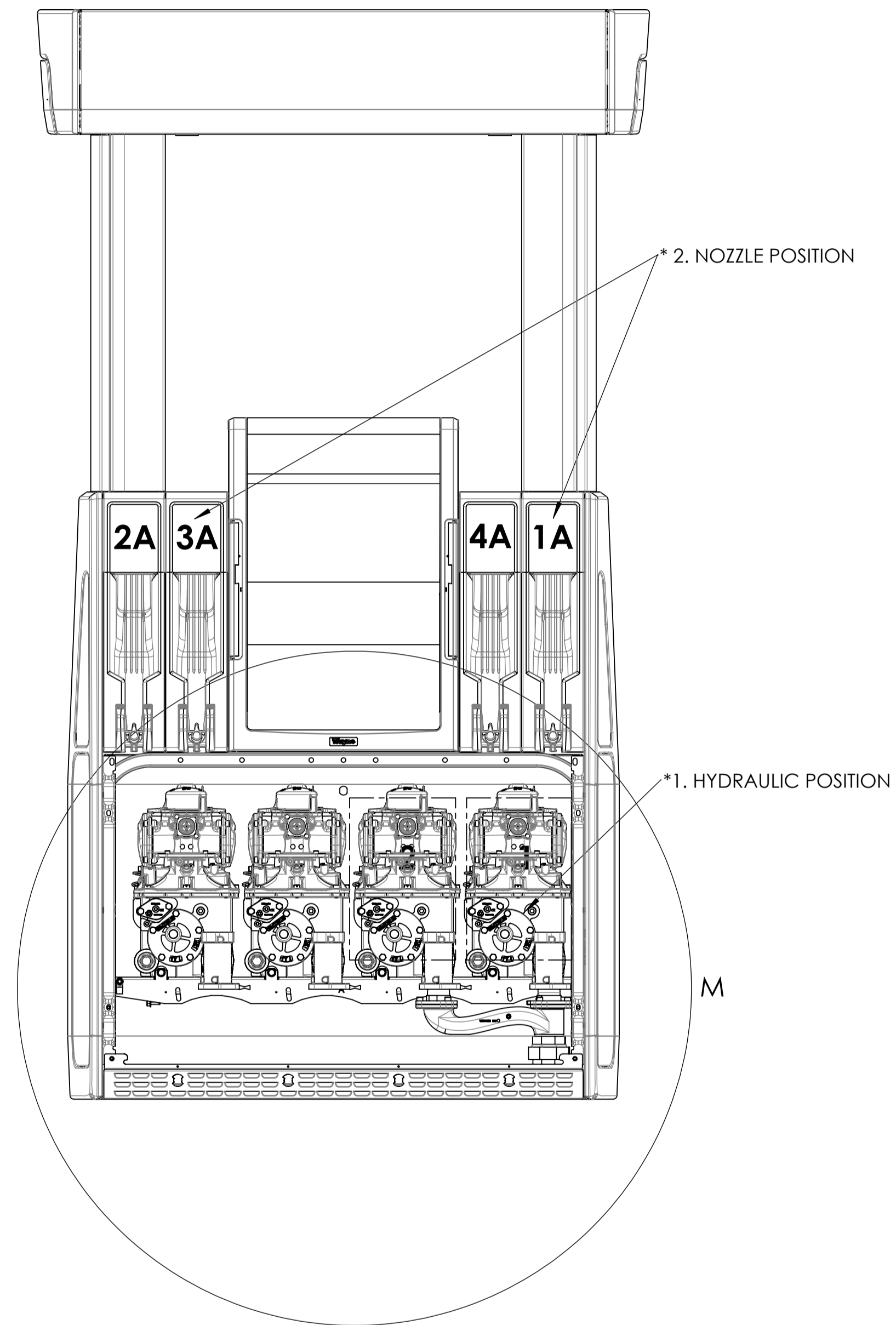
DOVER FUELING SOLUTIONS CONFIDENTIAL INFORMATION, SUBJECT TO NDA. THE DRAWINGS, TECHNICAL DATA, AND ALL OTHER INFORMATION SET FORTH IN THIS DOCUMENT COMPRISE TRADE SECRETS AND/OR OTHER CONFIDENTIAL INFORMATION THAT IS THE PROPERTY OF DOVER FUELING SOLUTIONS UK LTD. AND/OR ITS AFFILIATE(S) AND MAY BE SUBJECT TO COPYRIGHT OR OTHER PROTECTION. ACCESS TO AND/OR USE OF SUCH CONFIDENTIAL INFORMATION IS STRICTLY CONTROLLED AND LIMITED TO THE PURPOSE(S) FOR WHICH IT IS OR WAS PROVIDED, AND NO RECIPIENT IS PERMITTED TO USE, COPY, OR OTHERWISE DISCLOSE OR TRANSMIT SUCH INFORMATION, EXCEPT AS EXPRESSLY SET FORTH IN THE APPLICABLE NON-DISCLOSURE AGREEMENT(S), OR AS OTHERWISE AUTHORIZED IN WRITING BY, OR ON BEHALF OF, DOVER FUELING SOLUTIONS UK LTD. AND/OR ITS AFFILIATE(S). ALL RIGHTS RESERVED.

APPROVED BY	04	2024-06-17	WU027308-0001
Ivens Leal	REV	DATE	ECN NO.
DRAWN BY			
Leonardo Braga			



MATERIAL	DEBURR AND BREAK SHARP EDGES	SCALE	DO NOT SCALE DRAWING		Related Drawing DRAWING NO. WM047457 SHEET 4 OF 6
THICKNESS		1:9			
SURFACE TREATMENT	TITLE				
SURFACE FINISH	INSTALLATION INSTRUCTION				
GENERAL TOLERANCE	HELIX 5000, IEC, SUCTION				
REPLACED BY					

120 LPM WITH T-CONNECTION INLET LATAM



***83 NOTE:**

- 1 - T CONNECTOR PARTS ENCLOSED AT DELIVERY
- 2 - FOR MODELS 11-21 & 11-22 ONLY

UNLESS NOTED OTHERWISE, DIMENSIONS ARE IN mm

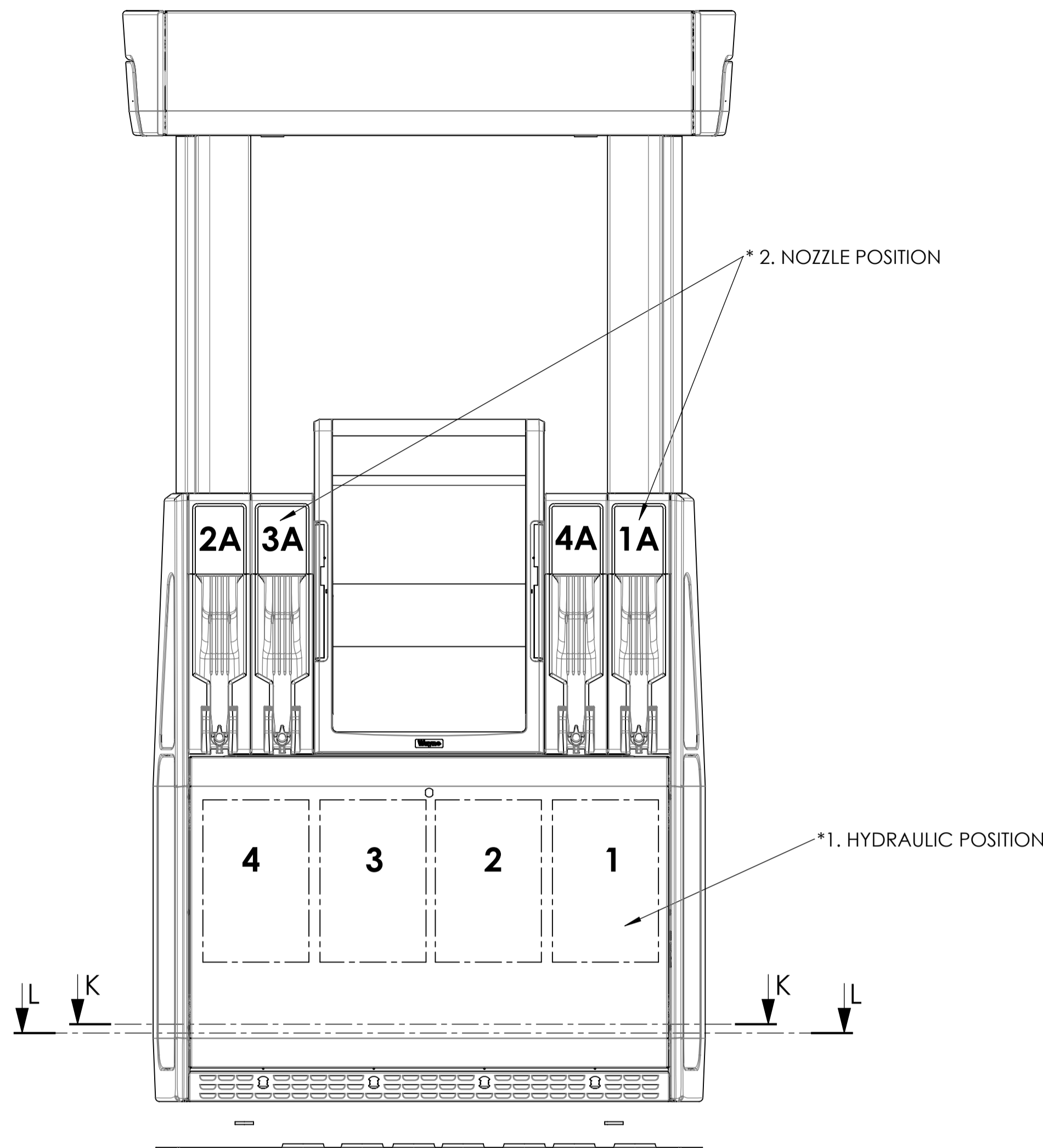
“DOVER FUELING SOLUTIONS CONFIDENTIAL INFORMATION, SUBJECT TO NDA. THE DRAWINGS, TECHNICAL DATA, AND ALL OTHER INFORMATION SET FORTH IN THIS DOCUMENT COMPRISE TRADE SECRETS AND/OR OTHER CONFIDENTIAL INFORMATION THAT IS THE PROPERTY OF DOVER FUELING SOLUTIONS UK LTD. AND/OR ITS AFFILIATE(S) AND MAY BE SUBJECT TO COPYRIGHT OR OTHER PROTECTION. ACCESS TO AND/OR USE OF SUCH CONFIDENTIAL INFORMATION IS STRICTLY CONTROLLED AND LIMITED TO THE PURPOSE(S) FOR WHICH IT IS OR WAS PROVIDED, AND NO RECIPIENT IS PERMITTED TO USE, COPY, OR OTHERWISE DISCLOSE OR TRANSMIT SUCH INFORMATION, EXCEPT AS EXPRESSLY SET FORTH IN THE APPLICABLE NON-DISCLOSURE AGREEMENT(S), OR AS OTHERWISE AUTHORIZED IN WRITING BY, OR ON BEHALF OF, DOVER FUELING SOLUTIONS UK LTD. AND/OR ITS AFFILIATE(S). ALL RIGHTS RESERVED.”

APPROVED BY Ivens Leal	04	2024-06-17	wu027308-0001
DRAWN BY Leonardo Braga	REV	DATE	ECN NO.

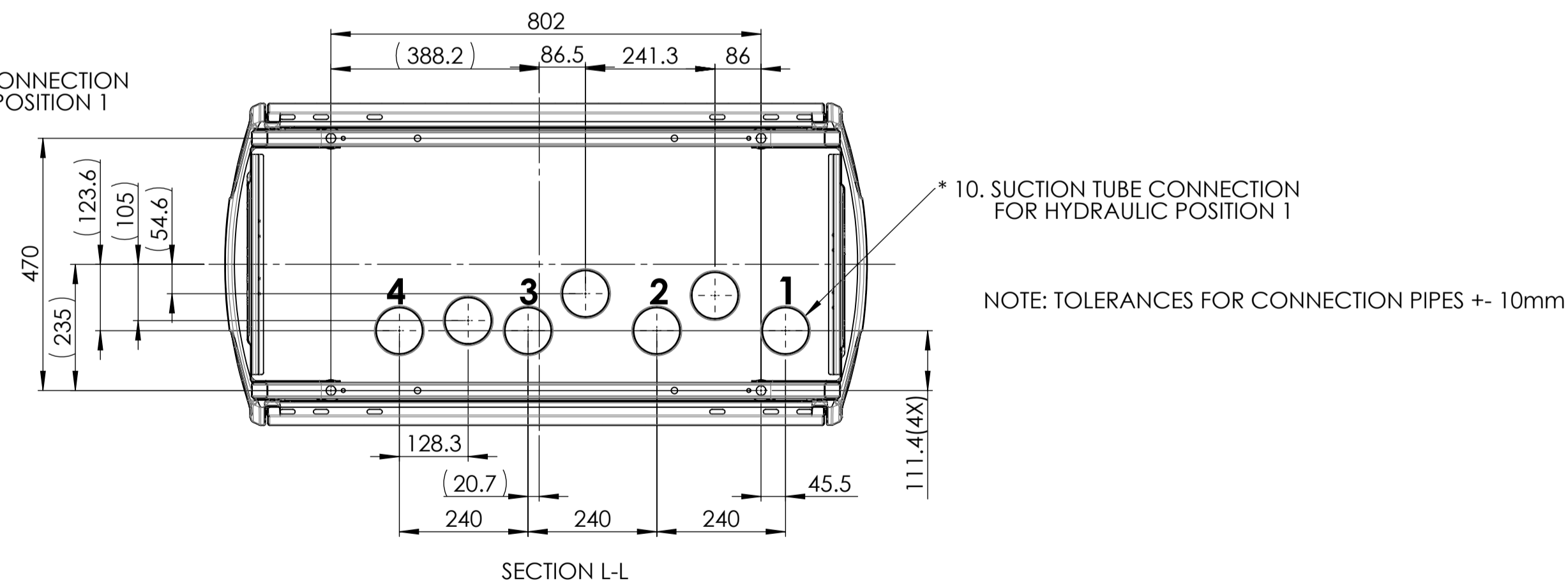
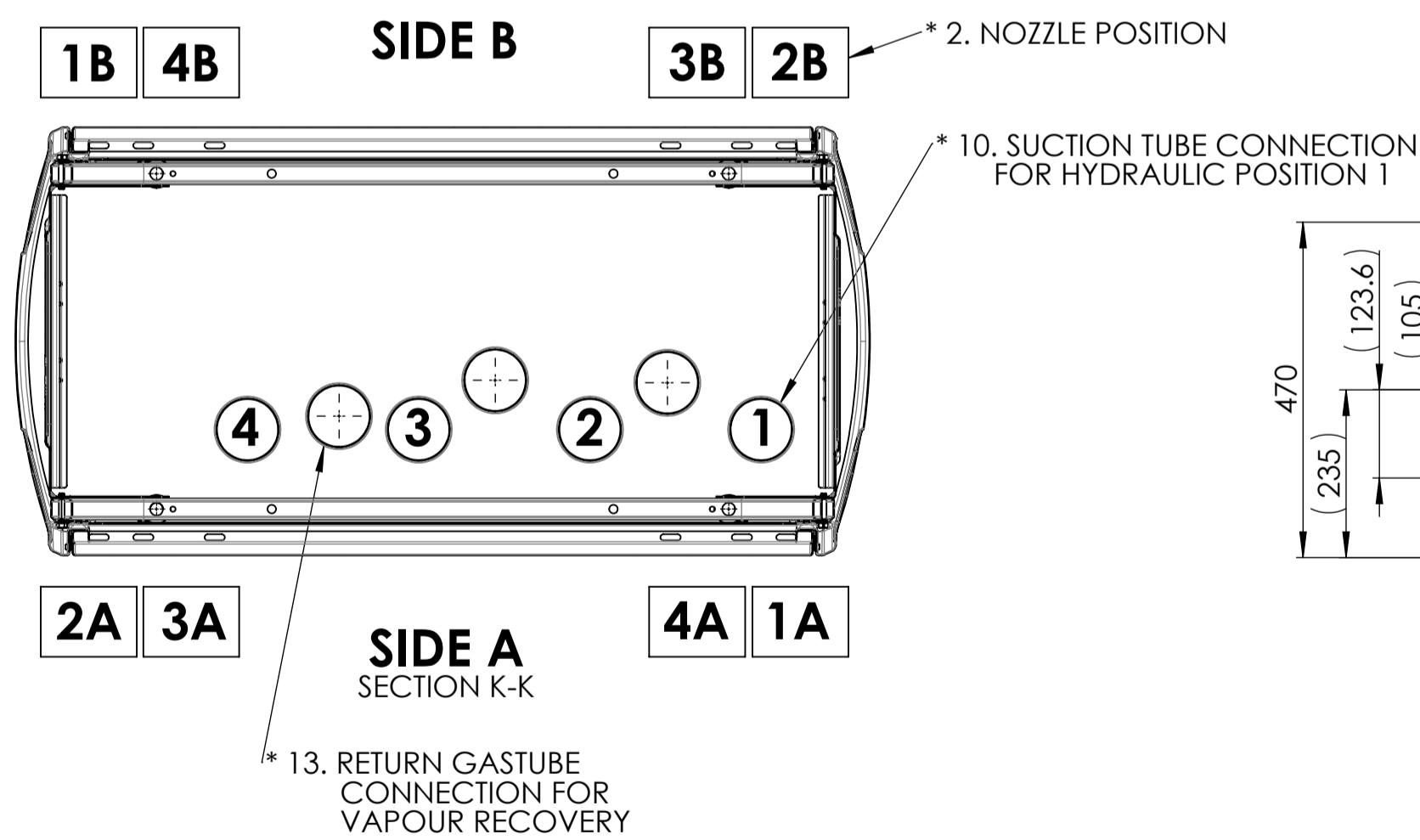
MATERIAL	DEBURR AND BREAK SHARP EDGES	SCALE 1:9	DO NOT SCALE DRAWING		Related Drawing
THICKNESS	SURFACE TREATMENT	TITLE INSTALLATION INSTRUCTION			DRAWING NO. WM047457
SURFACE FINISH	GENERAL TOLERANCE	HELIX 5000, IEC, SUCTION			SHEET 5 OF 6
REPLACED BY					A1

SUCTION LATAM

* 21. THIS INSTRUCTION IS VALID FOR HELIX 5000 SUCTION MODELS ACCORDING TO DOCUMENT (HYDRAULIC CONFIGURATIONS WM042531)



Model	Flow Rates L/min	Equip. Sides	Nozzle Position	Hydraulic
H(W/LU) 11-11R	40/40	Both	1A + 1B	1
H(W/LU) 11-110R	40	A	1A	1
H(W/LU) 11-21H	40/120	Both	1A + 1B	1 + 2
H(W/LU) 11-211H	120/40	Both	1A + 1B	1 + 2
H(W/LU) 11-22	120/40	Both	1A + 1B, 2A + 2B	1 + 2
H(W/LU) 11-31	120/40	Both	1A + 1B	1 + 2 + 3
H(W/LU) 22-22R	40/40, 40/40	Both	1A + 1B, 2A + 2B	1 + 2
H(W/LU) 22-220R	40/40	A	1A + 2A	1 + 2
H(W/LU) 22-32R 120/40	120/40 (90 SIM.) 120/40	Both	1A + 1B, 2A + 2B	1 + 2 + 3
H(W/LU) 33-33R	40/40/40, 40/40/40	Both	1A + 1B, 2A + 2B, 4A + 4B	1 + 2 + 3
H(W/LU) 33-330R	40/40/40	A	1A + 2A + 4A	1 + 2 + 3
H(W/LU) 33-33RU	40/40/40, 40/40/40	Both	1A + 1B, 2A + 2B, 4A + 4B	1 + 2 + 3
H(W/LU) 33-43	40/120	Both	1A + 1B, 2A + 2B, 4A + 4B	1 + 2 + 3 + 4
H(W/LU) 34-34R	40/40/40/40, 40/40/40/40	Both	1A+1B, 2A+2B, 3A+3B, 4A+4B	1 + 2 + 3
H(W/LU) 44-42R	40/40/40/40, 40/40/40/40	Both	1A + 1B, 2A + 2B	1 + 2 + 3 + 4
H(W/LU) 44-44R	40/40/40/40, 40/40/40/40	Both	1A+1B, 2A+2B, 3A+3B, 4A+4B	1 + 2 + 3 + 4
H(W/LU) 44-440R	40/40/40/40	A	1A + 2A + 3A + 4A	1 + 2 + 3 + 4
H(W/LU) 44-44RU	40/40/40/40, 40/40/40/40	Both	1A+1B, 2A+2B, 3A+3B, 4A+4B	1 + 2 + 3 + 4
H(W/LU) 45-42K	40/40/40/40, 40/40/40/40	Both	1A + 1B, 2A + 2B	1 + 2 + 3 + 4



UNLESS NOTED OTHERWISE, DIMENSIONS ARE IN mm

"DOVER FUELING SOLUTIONS CONFIDENTIAL INFORMATION, SUBJECT TO NDA. THE DRAWINGS, TECHNICAL DATA, AND ALL OTHER INFORMATION SET FORTH IN THIS DOCUMENT COMPRISE TRADE SECRETS AND/OR OTHER CONFIDENTIAL INFORMATION THAT IS THE PROPERTY OF DOVER FUELING SOLUTIONS UK LTD. AND/OR ITS AFFILIATE(S) AND MAY BE SUBJECT TO COPYRIGHT OR OTHER PROTECTION. ACCESS TO AND/OR USE OF SUCH CONFIDENTIAL INFORMATION IS STRICTLY CONTROLLED AND LIMITED TO THE PURPOSE(S) FOR WHICH IT IS OR WAS PROVIDED, AND NO RECIPIENT IS PERMITTED TO USE, COPY, OR OTHERWISE DISCLOSE OR TRANSMIT SUCH INFORMATION, EXCEPT AS EXPRESSLY SET FORTH IN THE APPLICABLE NON-DISCLOSURE AGREEMENT(S), OR AS OTHERWISE AUTHORIZED IN WRITING BY, OR ON BEHALF OF, DOVER FUELING SOLUTIONS UK LTD. AND/OR ITS AFFILIATE(S). ALL RIGHTS RESERVED."

APPROVED BY Ivens Leal	04	2024-06-17	wu027308-0001
DRAWN BY Leonardo Braga	REV	DATE	ECN NO.

MATERIAL	DEBURR AND BREAK SHARP EDGES	SCALE 1:9	DO NOT SCALE DRAWING		Related Drawing
THICKNESS	SURFACE TREATMENT	TITLE INSTALLATION INSTRUCTION			DRAWING NO. WM047457
SURFACE FINISH	GENERAL TOLERANCE	HELIX 5000, IEC, SUCTION			SHEET 6 OF 6
REPLACED BY					A1