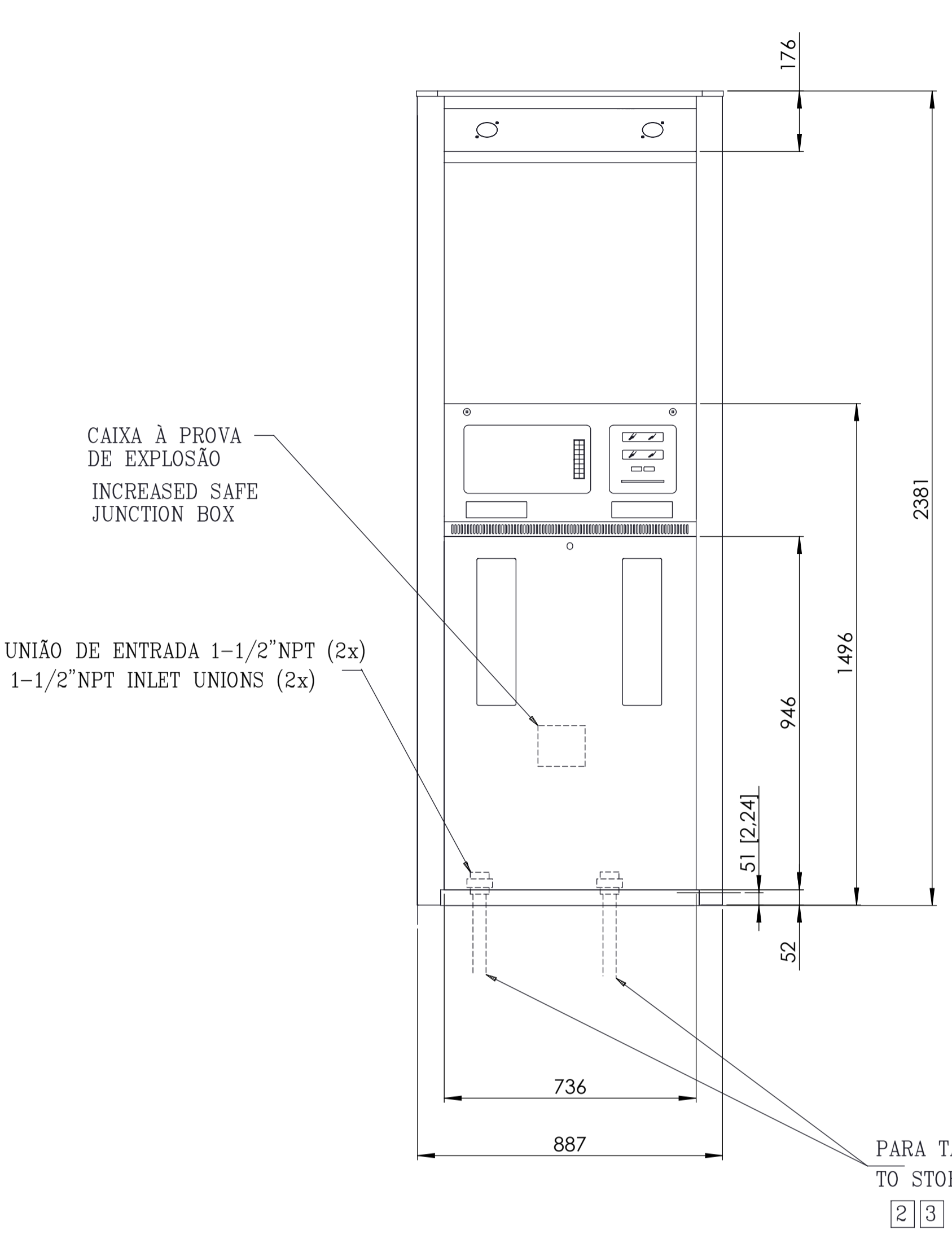
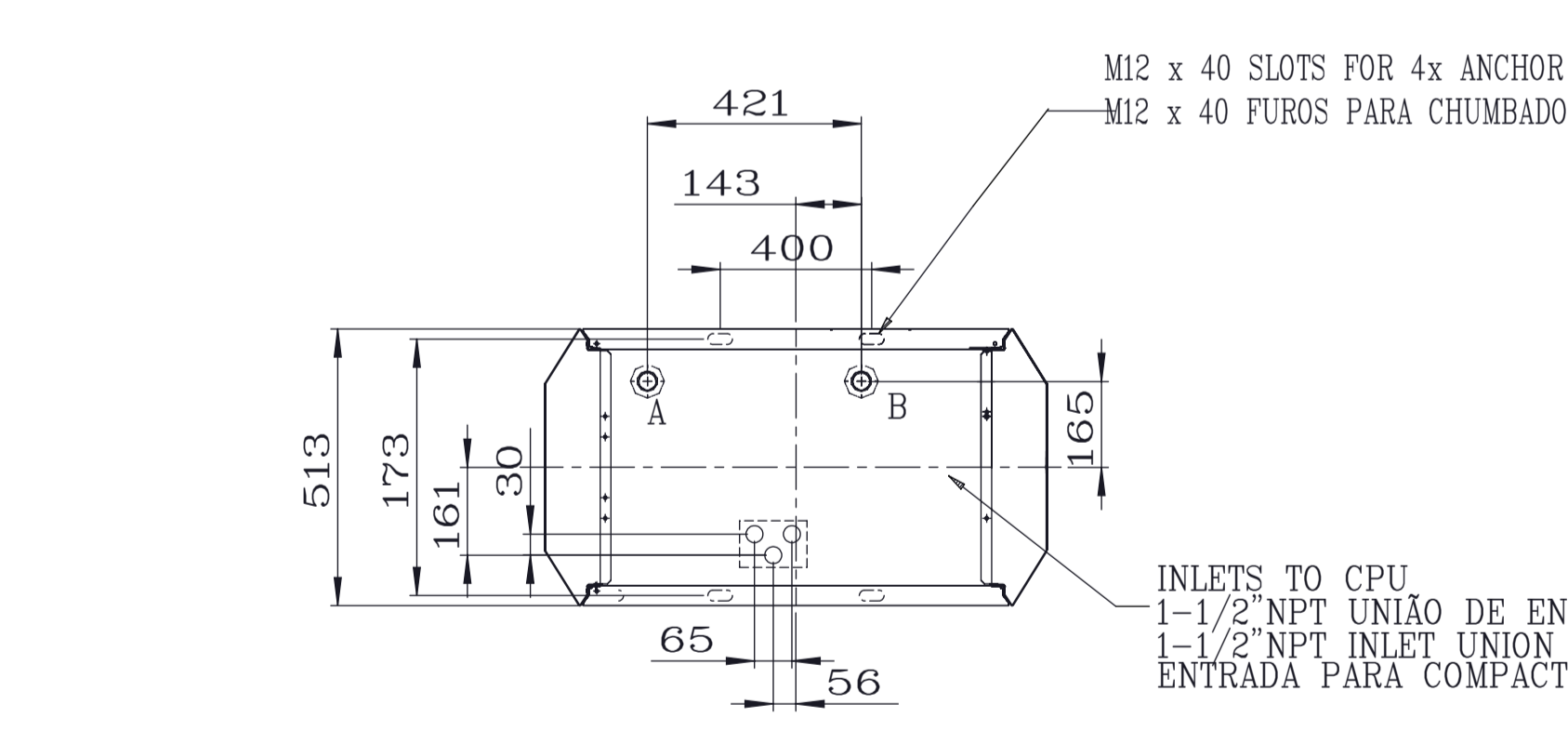


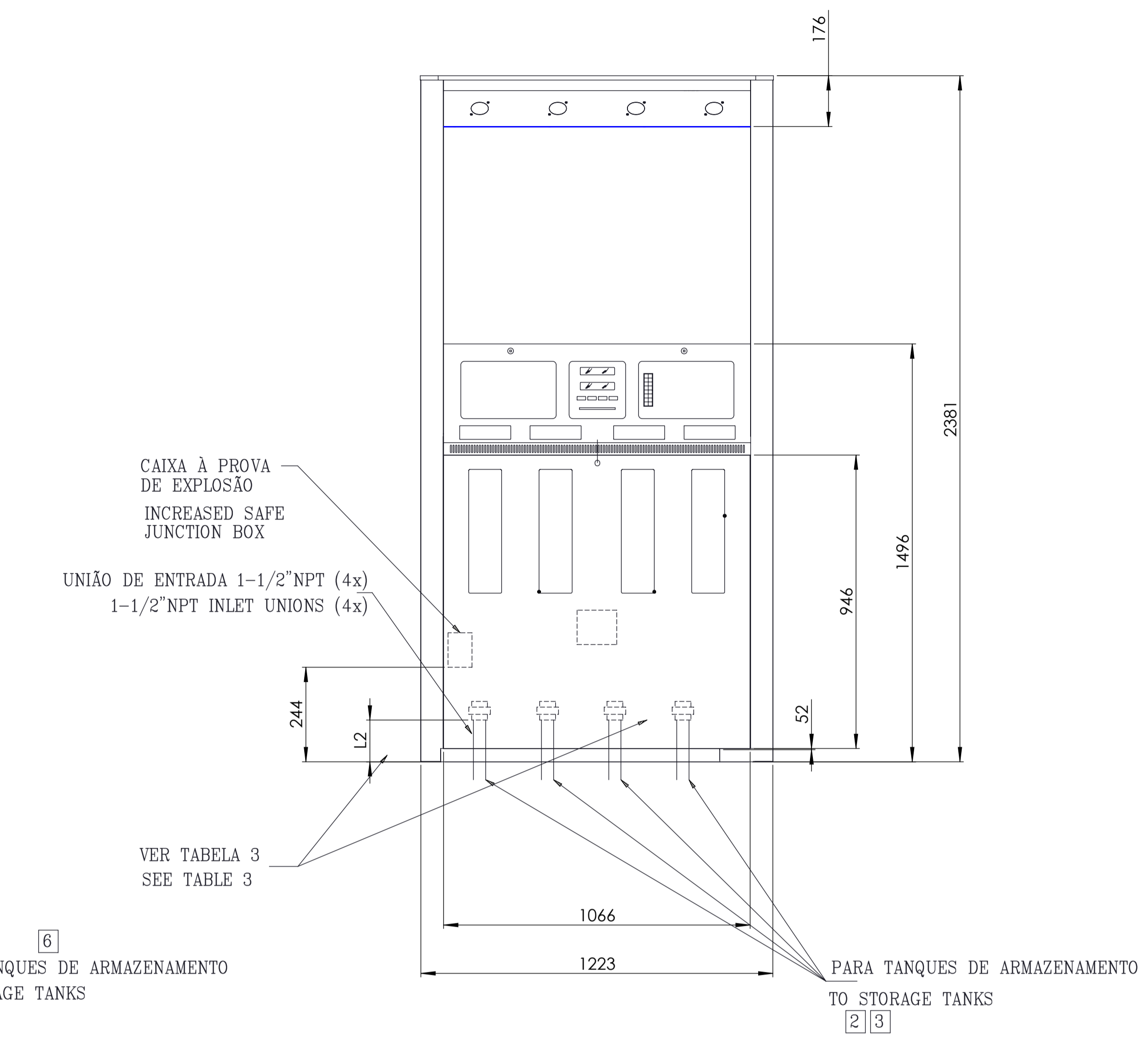
DESCRIPTION OF CHANGE
ALTERAÇÃO DE TEMPLATE.



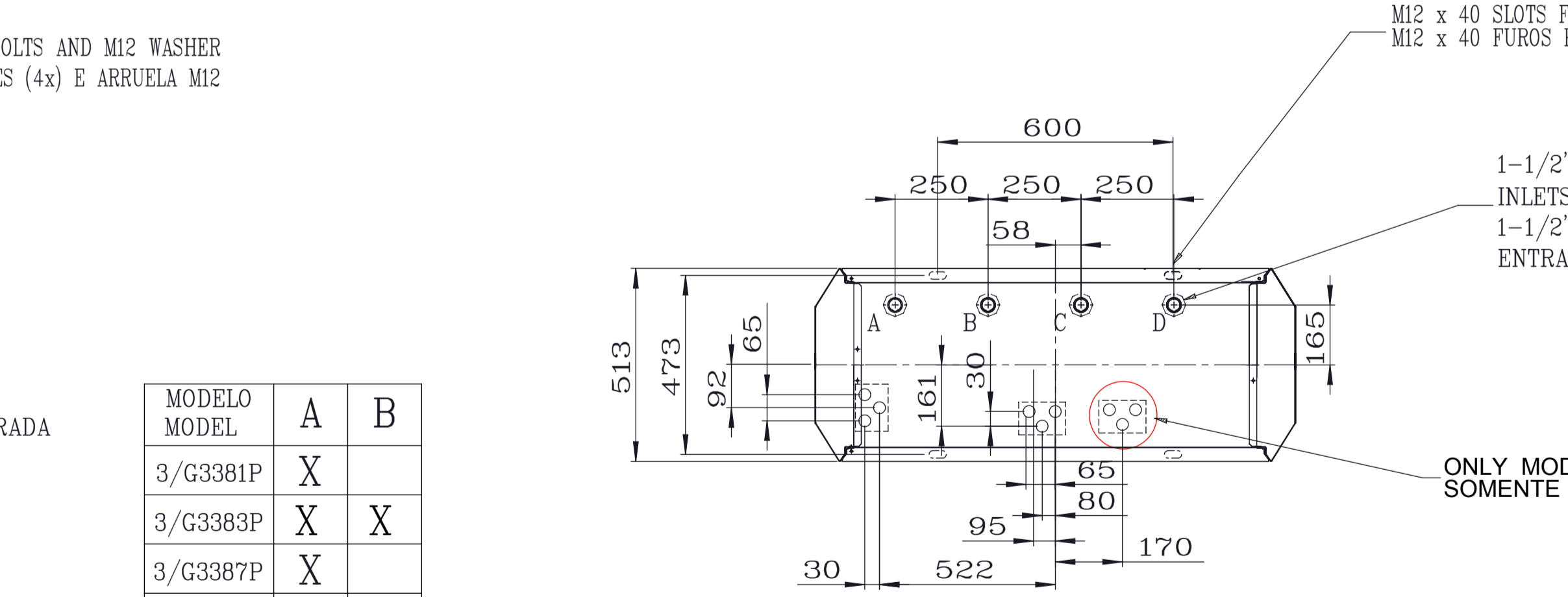
MODELO 3G3380P



BOMBA COM CAIXA À PROVA DE EXPLOÇÃO
DISPENSER WITH INCREASED SAFE JUNCTION BOX



MODELO 3G3300P / 3G3400P



BOMBA COM CAIXA À PROVA DE EXPLOÇÃO
DISPENSER WITH INCREASED SAFE JUNCTION BOX

MODELO MODEL	A	B
3/G3381P	X	
3/G3383P	X	X
3/G3387P	X	
3/G3388P	X	X
3/G3389P	X	X
3/G3384P	X	X
3/G338xPO	X	

TABELA 1
TABLE 1

- NOTAS:
- 1- TODA INSTALAÇÃO HIDRÁULICA E ELÉTRICA DEVE ESTAR CONFORME OS REGULATÓRIOS APLICÁVEIS.
 - 2- A TUBULAÇÃO DO TANQUE PARA O DISPENSADOR SERÁ INCLINADA PARA CIMA, EVITANDO A CONCENTRAÇÃO DE AR OU LÍQUIDOS.
 - 3- UTILIZE JUNTAS UNIVERSAIS NO DISPENSADOR PARA PERMITIR O ASSENTAMENTO DE TERRA.
 - 4- PARA A CONEXÃO DOS ELETRODUTOS, SÃO REQUERIDAS AS FURAÇÕES MOSTRADAS. ALGUMA OU TODAS PODEM SER USADAS PARA FAZER A CONEXÃO ELÉTRICA DO DISPENSADOR.
 - 5- INSTALE FIRMENTE O DISPENSADOR NA ILHA USANDO CHUMBADORES NA POSIÇÃO REQUERIDA.
 - 6- VÁLVULAS DE EMERGÊNCIA E SEGURANÇA REQUERIDOS POR REGULATÓRIOS APLICÁVEIS E PELA NFPA30A.
 - 7- QUALQUER MODIFICAÇÃO NO EQUIPAMENTO PODE INVALIDAR O CERTIFICADO.

- NOTES:
- 1- ALL PIPING AND ELECTRICAL INSTALLATIONS MUST CONFORM TO ALL APPLICABLE LOCAL REGULATIONS.
 - 2- PIPING FROM TANK TO DISPENSER SHOULD SLOPE UPWARDS, AVOIDING AIR OR LIQUID TRAPS.
 - 3- USE UNIVERSAL JOINTS AT DISPENSERS TO ALLOW FOR GROUND MOVEMENT.
 - 4- CABLE ENTERANCES SHOWN ARE PROVIDED. ANY OR ALL MAY BE USE TO MAKE ELECTRICAL CONNECTIONS TO DISPENSER.
 - 5- FIRMLY MOUNT THE DISPENSER TO THE ISLAND USING THE ANCHOR BOLT LOCATIONS PROVIDED.
 - 6- EMERGENCY SHUTOFF VALVES AND BREAKAWAY DEVICES AS WELL AS ANY OTHER SATETY DEVICES MUST BE INSTALLED AND, MAINTAINED PER THE MANUFACTURER'S INSTRUCTIONS.
 - 7- ANY MODIFICATION TO THIS EQUIPMENT MAY INVALID THE EQUIPMENT CERTIFICATION.

MODELO MODEL	L1	L2
3/G3000P	294	330
3/G3000PO	165	205

TABELA 3
TABLE 3

MODELO MODEL	A	B	C	D
3/G3397P	X			
3/G3399P	X			X
3/G3390P	X		X	X
3/G3490P	X	X	X	X
3/G3394PO	X			X
3/G3399PO	X			X
3/G3394P	X		X	X
3/G3494P	X	X	X	X

ORGANISMO CERTIFICADOR	
APPROVAL	
CIFR:	
INDEXED:	
UX:	
SEX:	
BRN:	

WAYNE CONFIDENTIAL INFORMATION, SUBJECT TO NDA. THE DRAWINGS, TECHNICAL DATA, AND ALL OTHER INFORMATION SET FORTH IN THIS DOCUMENT COMPRISE TRADE SECRETS AND OTHER CONFIDENTIAL INFORMATION THAT IS THE EXCLUSIVE PROPERTY OF WAYNE FUELING SYSTEMS. ACCESS TO AND USE OF SUCH INFORMATION IS STRICTLY CONTROLLED AND LIMITED TO THE PURPOSE FOR WHICH IT WAS PROVIDED, AND NO RECIPIENT IS PERMITTED TO USE, COPY, OR DISCLOSE SUCH INFORMATION EXCEPT AS EXPRESSLY SET FORTH IN THE APPLICABLE NON-DISCLOSURE AGREEMENT, OR OTHERWISE AUTHORIZED IN WRITING BY WAYNE FUELING SYSTEMS.

APPROVED BY	REV	DATE	ECN NO.
MANOEL SANTOS	E	27/10/2014	EC03799
NATASHA MARIA	REV	DATE	ECN NO.

UNLESS NOTED OTHERWISE, DIMENSIONS ARE IN mm

MATERIAL	DEBURR AND BREAK SHARP EDGES	SCALE	DO NOT SCALE DRAWING	Wayne FUELING SYSTEMS	Schedule drawing
THICKNESS		1:8			
SURFACE TREATMENT					
SURFACE FINISH					
GENERAL TOLERANCE	TABELA 2				
REPLACED BY	TABELA 2				
TITLE				DRAWING NO.	
INST. DE INST. MODELOS DE SUÇÃO 3/G3000P				12-305532	
FOOTPRINT SUCTION MODELS 3/G3000P				SHEET 1 OF 1	